

FOXO3A Rabbit pAb

Catalog No.: A0102 **27 Publications**

Basic Information

Observed MW

80-90kDa

Calculated MW

71kDa

Category

Primary antibody

Applications

ELISA, WB, IHC-P, IF/ICC

Cross-Reactivity

Human, Mouse, Rat

Background

Enables DNA binding activity; DNA-binding transcription factor activity, RNA polymerase II-specific; and mitochondrial transcription factor activity. Involved in several processes, including mitochondrial transcription; positive regulation of muscle atrophy; and positive regulation of pri-miRNA transcription by RNA polymerase II. Acts upstream of or within several processes, including extrinsic apoptotic signaling pathway in absence of ligand; female gonad development; and neuronal stem cell population maintenance. Located in cytosol; mitochondrial outer membrane; and nucleus. Part of protein-containing complex. Colocalizes with mitochondrial matrix. Is expressed in several structures, including alimentary system; brain; early embryo; genitourinary system; and hemolymphoid system. Used to study dermoid cyst of ovary. Orthologous to human FOXO3 (forkhead box O3).

Recommended Dilutions

WB	1:500 - 1:1000
IHC-P	1:50 - 1:200
IF/ICC	1:50 - 1:200

Immunogen Information

Gene ID

56484

Swiss Prot

Q9WVH4

Immunogen

Recombinant fusion protein containing a sequence corresponding to amino acids 558-635 of mouse FOXO3A (NP_062714.1).

Synonyms

Fkhr2; FKHL1; Foxo3a; 1110048B16Rik; 2010203A17Rik; FOXO3A

Contact

	400-999-6126
	cn.market@abclonal.com.cn
	www.abclonal.com.cn

Product Information

Source

Rabbit

Isotype

IgG

Purification

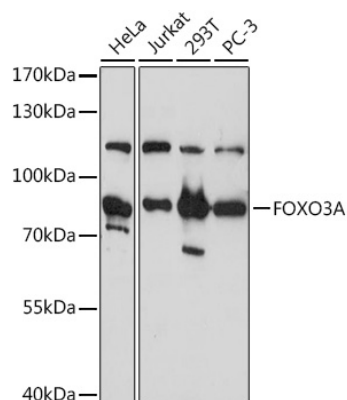
Affinity purification

Storage

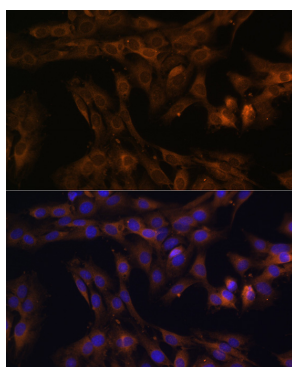
Store at -20°C. Avoid freeze / thaw cycles.

Buffer: PBS with 0.02% sodium azide, 50% glycerol, pH7.3.

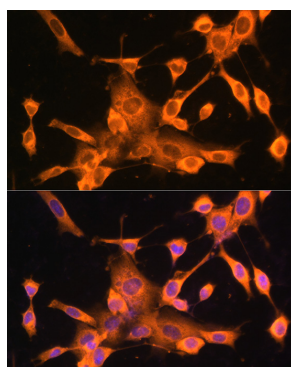
Validation Data



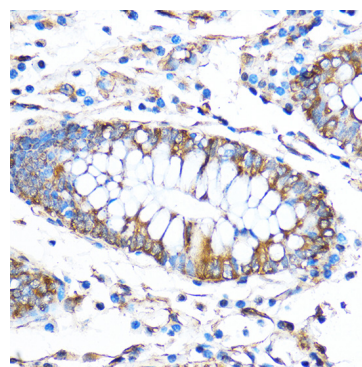
Western blot analysis of extracts of various cell lines, using FOXO3A antibody (A0102) at 1:1000 dilution. Secondary antibody: HRP Goat Anti-Rabbit IgG (H+L) (AS014) at 1:10000 dilution. Lysates/proteins: 25µg per lane. Blocking buffer: 3% nonfat dry milk in TBST. Detection: ECL Basic Kit (RM00020). Exposure time: 5s.



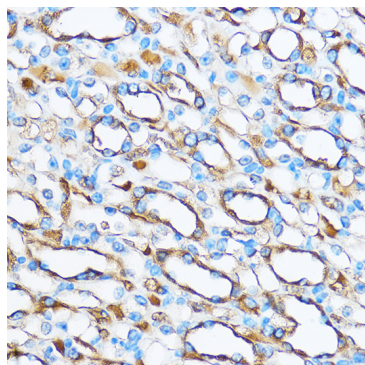
Immunofluorescence analysis of C6 cells using FOXO3A Rabbit pAb (A0102) at dilution of 100 (40x lens). Blue: DAPI for nuclear staining.



Immunofluorescence analysis of NIH-3T3 cells using FOXO3A Rabbit pAb (A0102) at dilution of 100 (40x lens). Blue: DAPI for nuclear staining.



Immunohistochemistry analysis of paraffin-embedded Human colon using FOXO3A Rabbit pAb (A0102) at dilution of 1:50 (40x lens). Perform microwave antigen retrieval with 10 mM PBS buffer pH 7.2 before commencing with IHC staining protocol.



Immunohistochemistry analysis of paraffin-embedded Mouse kidney using FOXO3A Rabbit pAb (A0102) at dilution of 1:50 (40x lens). Perform microwave antigen retrieval with 10 mM PBS buffer pH 7.2 before commencing with IHC staining protocol.