

[KD Validated] HDAC1 Rabbit pAb

Catalog No.: A0238

18 Publications

Basic Information

Observed MW

62kDa/

Calculated MW

55kDa

Category

Primary antibody

Applications

ELISA, WB, IHC-P, IF/ICC, IP

Cross-Reactivity

Human, Mouse, Rat

Background

Histone acetylation and deacetylation, catalyzed by multisubunit complexes, play a key role in the regulation of eukaryotic gene expression. The protein encoded by this gene belongs to the histone deacetylase/acuc/apha family and is a component of the histone deacetylase complex. It also interacts with retinoblastoma tumor-suppressor protein and this complex is a key element in the control of cell proliferation and differentiation. Together with metastasis-associated protein-2, it deacetylates p53 and modulates its effect on cell growth and apoptosis.

Recommended Dilutions

WB 1:500 - 1:1000

IHC-P 1:50 - 1:200

IF/ICC 1:50 - 1:100

IP 0.5µg-4µg antibody for
200µg-400µg extracts of
whole cells

Immunogen Information

Gene ID

3065

Swiss Prot

Q13547

Immunogen

A synthetic peptide corresponding to a sequence within amino acids 393-482 of human HDAC1 (NP_004955.2).

Synonyms

HD1; RPD3; KDAC1; GON-10; RPD3L1; C1

Contact

 | 400-999-6126 | cn.market@abclonal.com.cn | www.abclonal.com.cn

Product Information

Source

Rabbit

Isotype

IgG

Purification

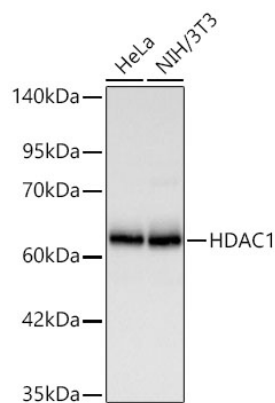
Affinity purification

Storage

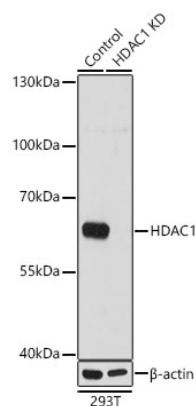
Store at -20°C. Avoid freeze / thaw cycles.

Buffer: PBS with 0.02% sodium azide, 50% glycerol, pH7.3.

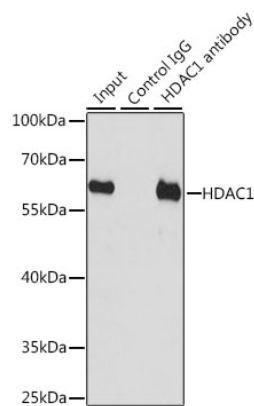
Validation Data



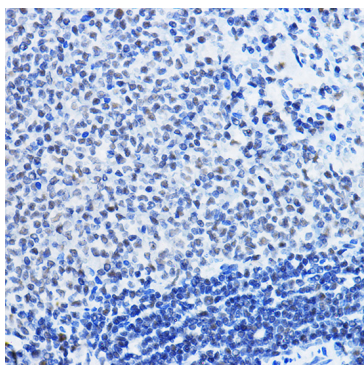
Western blot analysis of various lysates using [KD Validated] HDAC1 Rabbit pAb (A0238) at 1:2000 dilution incubated at room temperature for 1.5 hours.
Secondary antibody: HRP-conjugated Goat anti-Rabbit IgG (H+L)(AS014) at 1:10000 dilution.
Lysates/proteins: 25 µg per lane.
Blocking buffer: 3% nonfat dry milk in TBST.
Detection: ECL Basic Kit (RM00020)
Exposure time: 20 s.



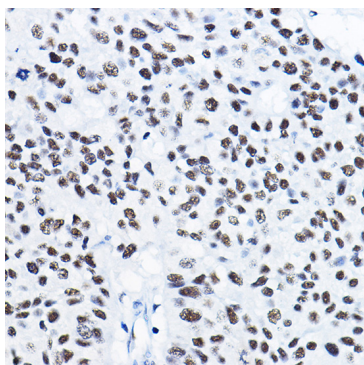
Western blot analysis of lysates from wild type (WT) and HDAC1 knockdown (KD) 293T cells, using [KD Validated] HDAC1 Rabbit pAb (A0238) at 1:1000 dilution.
Secondary antibody: HRP Goat Anti-Rabbit IgG (H+L) (AS014) at 1:10000 dilution.
Lysates/proteins: 25µg per lane.
Blocking buffer: 3% nonfat dry milk in TBST.
Detection: ECL Basic Kit (RM00020).
Exposure time: 1s.



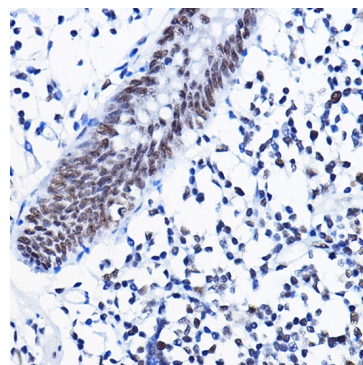
Immunoprecipitation analysis of 200 µg extracts of HT-29 cells, using 3 µg [KD Validated] HDAC1 Rabbit pAb (A0238). Western blot was performed from the immunoprecipitate using HDAC1 antibody (A0238) at a dilution of 1:1000.



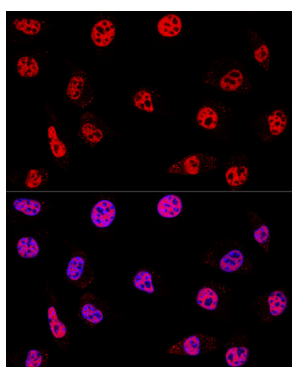
Immunohistochemistry analysis of HDAC1 in paraffin-embedded rat spleen using [KD Validated] HDAC1 Rabbit pAb (A0238) at dilution of 1:50 (40x lens). Perform high pressure antigen retrieval with 10 mM citrate buffer pH 6.0 before commencing with IHC staining protocol.



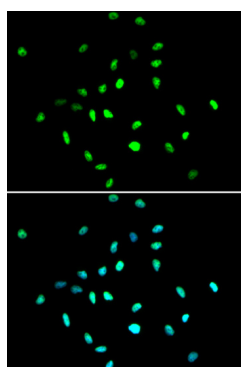
Immunohistochemistry analysis of HDAC1 in paraffin-embedded human lung cancer using [KD Validated] HDAC1 Rabbit pAb (A0238) at dilution of 1:50 (40x lens). Perform high pressure antigen retrieval with 10 mM citrate buffer pH 6.0 before commencing with IHC staining protocol.



Immunohistochemistry analysis of HDAC1 in paraffin-embedded human colon using [KD Validated] HDAC1 Rabbit pAb (A0238) at dilution of 1:50 (40x lens). Perform high pressure antigen retrieval with 10 mM citrate buffer pH 6.0 before commencing with IHC staining protocol.



Confocal immunofluorescence analysis of L929 cells using [KD Validated] HDAC1 Rabbit pAb (A0238) at dilution of 1:200. Blue: DAPI for nuclear staining.



Immunofluorescence analysis of A549 cells using [KD Validated] HDAC1 Rabbit pAb (A0238). Secondary antibody: Cy3 Goat Anti-Rabbit IgG (H+L) (AS007) at 1:500 dilution. Blue: DAPI for nuclear staining.