

# eIF2 $\alpha$ Rabbit pAb

Catalog No.: A0764

26 Publications

## Basic Information

**Observed MW**

38kDa

**Calculated MW**

36kDa

**Category**

Primary antibody

**Applications**

ELISA, WB

**Cross-Reactivity**

Human, Mouse, Rat

## Background

The translation initiation factor EIF2 catalyzes the first regulated step of protein synthesis initiation, promoting the binding of the initiator tRNA to 40S ribosomal subunits. Binding occurs as a ternary complex of methionyl-tRNA, EIF2, and GTP. EIF2 is composed of 3 nonidentical subunits, the 36-kD EIF2-alpha subunit (EIF2S1), the 38-kD EIF2-beta subunit (EIF2S2; MIM 603908), and the 52-kD EIF2-gamma subunit (EIF2S3; MIM 300161). The rate of formation of the ternary complex is modulated by the phosphorylation state of EIF2-alpha (Ernst et al., 1987 [PubMed 2948954]).

## Recommended Dilutions

WB 1:100 - 1:500

## Immunogen Information

**Gene ID**

1965

**Swiss Prot**

P05198

**Immunogen**

Recombinant fusion protein containing a sequence corresponding to amino acids 1-260 of human eIF2 $\alpha$  (NP\_004085.1).

**Synonyms**EIF2; EIF-2; EIF2A; EIF-2A; EIF-2alpha; eIF2 $\alpha$ 

## Contact

 | 400-999-6126 | [cn.market@abclonal.com.cn](mailto:cn.market@abclonal.com.cn) | [www.abclonal.com.cn](http://www.abclonal.com.cn)

## Product Information

**Source**

Rabbit

**Isotype**

IgG

**Purification**

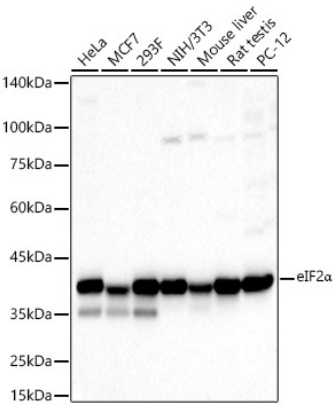
Affinity purification

**Storage**

Store at -20°C. Avoid freeze / thaw cycles.

Buffer: PBS with 0.02% sodium azide, 50% glycerol, pH 7.3.

# Validation Data



Western blot analysis of various lysates, using eIF2α antibody (A0764) at 1:400 dilution.  
Secondary antibody: HRP Goat Anti-Rabbit IgG (H+L) (AS014) at 1:10000 dilution.  
Lysates/proteins: 25μg per lane.  
Blocking buffer: 3% nonfat dry milk in TBST.  
Detection: ECL Basic Kit (RM00020).  
Exposure time: 15s.