

# CTR1/SLC31A1 Rabbit mAb

Catalog No.: A0773

Recombinant

3 Publications

## Basic Information

### Observed MW

32kDa

### Calculated MW

21kDa

### Category

Primary antibody

### Applications

ELISA, WB

### Cross-Reactivity

Human, Mouse, Rat

### CloneNo number

ARC2537

## Background

The protein encoded by this gene is a high-affinity copper transporter found in the cell membrane. The encoded protein functions as a homotrimer to effect the uptake of dietary copper.

## Recommended Dilutions

WB 1:500 - 1:1000

## Immunogen Information

### Gene ID

1317

### Swiss Prot

O15431

### Immunogen

A synthetic peptide corresponding to a sequence within amino acids 1-100 of human CTR1/SLC31A1 (NP\_001850.1).

### Synonyms

CTR1; NSCT; COPT1; CTR1/SLC31A1

## Contact

☎ | 400-999-6126

✉ | [cn.market@abclonal.com.cn](mailto:cn.market@abclonal.com.cn)

🌐 | [www.abclonal.com.cn](http://www.abclonal.com.cn)

## Product Information

### Source

Rabbit

### Isotype

IgG

### Purification

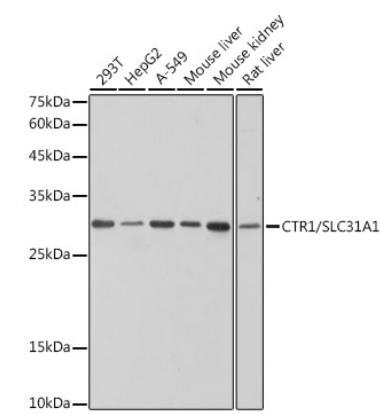
Affinity purification

### Storage

Store at -20°C. Avoid freeze / thaw cycles.

Buffer: PBS with 0.02% sodium azide, 0.05% BSA, 50% glycerol, pH7.3.

Validation Data



Western blot analysis of various lysates using CTR1/SLC31A1 Rabbit mAb (A0773) at 1:1000 dilution. Secondary antibody: HRP Goat Anti-Rabbit IgG (H+L) (AS014) at 1:10000 dilution. Lysates/proteins: 25µg per lane. Blocking buffer: 3% nonfat dry milk in TBST. Detection: ECL Basic Kit (RM00020). Exposure time: 1s.