

# Cytokeratin 8 (KRT8) Rabbit pAb

Catalog No.: A1024

6 Publications

## Basic Information

**Observed MW**

55kDa

**Calculated MW**

54kDa

**Category**

Primary antibody

**Applications**

ELISA, WB, IHC-P, IF/ICC

**Cross-Reactivity**

Human, Mouse, Rat

## Background

This gene is a member of the type II keratin family clustered on the long arm of chromosome 12. Type I and type II keratins heteropolymerize to form intermediate-sized filaments in the cytoplasm of epithelial cells. The product of this gene typically dimerizes with keratin 18 to form an intermediate filament in simple single-layered epithelial cells. This protein plays a role in maintaining cellular structural integrity and also functions in signal transduction and cellular differentiation. Mutations in this gene cause cryptogenic cirrhosis. Alternatively spliced transcript variants have been found for this gene.

## Recommended Dilutions

<b>WB</b>	1:2000 - 1:4000
<b>IHC-P</b>	1:50 - 1:200
<b>IF/ICC</b>	1:50 - 1:200

## Immunogen Information

**Gene ID**

3856

**Swiss Prot**

P05787

**Immunogen**

Recombinant fusion protein containing a sequence corresponding to amino acids 1-483 of human Cytokeratin 8 (KRT8) (NP\_002264.1).

**Synonyms**

K8; KO; CK8; CK-8; CYK8; K2C8; CARD2; Cytokeratin 8 (KRT8)

## Contact

	400-999-6126
	<a href="mailto:cn.market@abclonal.com.cn">cn.market@abclonal.com.cn</a>
	<a href="http://www.abclonal.com.cn">www.abclonal.com.cn</a>

## Product Information

**Source**

Rabbit

**Isotype**

IgG

**Purification**

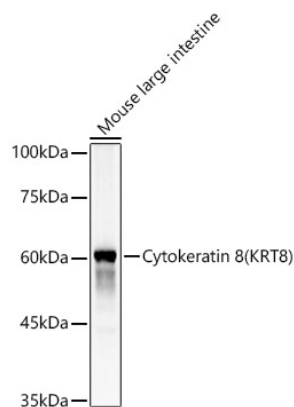
Affinity purification

**Storage**

Store at -20°C. Avoid freeze / thaw cycles.

Buffer: PBS with 0.05% proclin300, 50% glycerol, pH7.3.

## Validation Data



Western blot analysis of lysates from Mouse large intestine, using Cytokeratin 8 (KRT8) Rabbit pAb (A1024) at 1:4000 dilution.

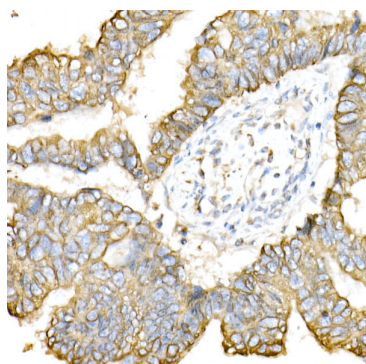
Secondary antibody: HRP Goat Anti-Rabbit IgG (H+L) (AS014) at 1:10000 dilution.

Lysates/proteins: 25µg per lane.

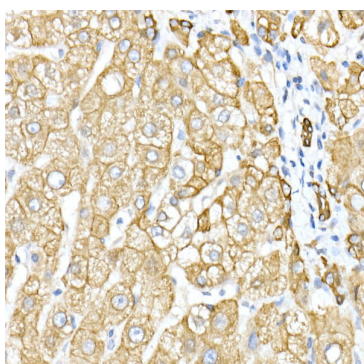
Blocking buffer: 3% nonfat dry milk in TBST.

Detection: ECL Basic Kit (RM00020).

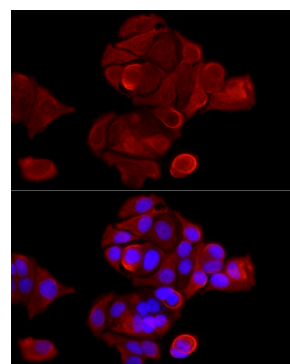
Exposure time: 10s.



Immunohistochemistry analysis of Cytokeratin 8 (KRT8) in paraffin-embedded human colon carcinoma using Cytokeratin 8 (KRT8) Rabbit pAb (A1024) at dilution of 1:50 (40x lens). Perform high pressure antigen retrieval with 10 mM citrate buffer pH 6.0 before commencing with IHC staining protocol.



Immunohistochemistry analysis of Cytokeratin 8 (KRT8) in paraffin-embedded human liver using Cytokeratin 8 (KRT8) Rabbit pAb (A1024) at dilution of 1:50 (40x lens). Perform high pressure antigen retrieval with 10 mM citrate buffer pH 6.0 before commencing with IHC staining protocol.



Immunofluorescence analysis of MCF7 cells using Cytokeratin 8 (KRT8) Rabbit pAb (A1024) at dilution of 1:300 (40x lens). Secondary antibody: Cy3 Goat Anti-Rabbit IgG (H+L) (AS007) at 1:500 dilution. Blue: DAPI for nuclear staining.