

# IRF3 Rabbit pAb

Catalog No.: A11118

13 Publications

## Basic Information

**Observed MW**

47kDa

**Calculated MW**

47kDa

**Category**

Primary antibody

**Applications**

ELISA, WB, IHC-P, IF/ICC, ChIP, IP

**Cross-Reactivity**

Human, Mouse, Rat

## Background

This gene encodes a member of the interferon regulatory transcription factor (IRF) family. The encoded protein is found in an inactive cytoplasmic form that upon serine/threonine phosphorylation forms a complex with CREBBP. This complex translocates to the nucleus and activates the transcription of interferons alpha and beta, as well as other interferon-induced genes. The protein plays an important role in the innate immune response against DNA and RNA viruses. Mutations in this gene are associated with Encephalopathy, acute, infection-induced, herpes-specific, 7.

## Recommended Dilutions

**WB** 1:1000 - 1:5000**IHC-P** 1:50 - 1:200**IF/ICC** 1:50 - 1:200**ChIP** 5µg antibody for  
10µg-15µg of Chromatin**IP** 0.5µg-4µg antibody for  
200µg-400µg extracts of  
whole cells

## Immunogen Information

**Gene ID**

3661

**Swiss Prot**

Q14653

**Immunogen**

Recombinant fusion protein containing a sequence corresponding to amino acids 100-200 of human IRF3 (NP\_001184051.1).

**Synonyms**

IIAE7; IRF3

## Contact

 | 400-999-6126 | [cn.market@abclonal.com.cn](mailto:cn.market@abclonal.com.cn) | [www.abclonal.com.cn](http://www.abclonal.com.cn)

## Product Information

**Source**

Rabbit

**Isotype**

IgG

**Purification**

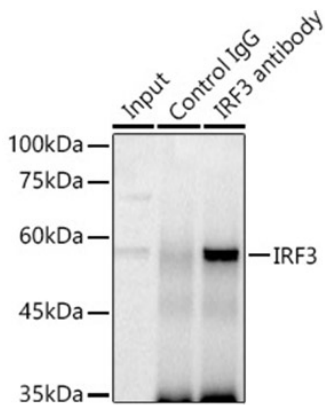
Affinity purification

**Storage**

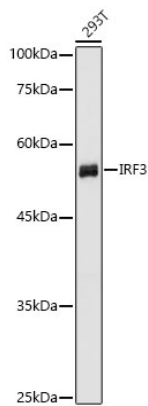
Store at -20°C. Avoid freeze / thaw cycles.

Buffer: PBS with 0.01% thimerosal, 50% glycerol, pH7.3.

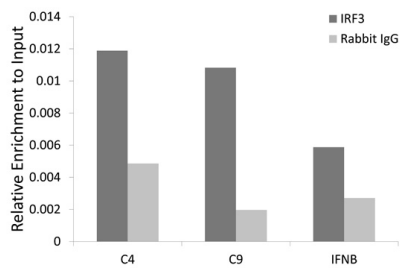
Validation Data



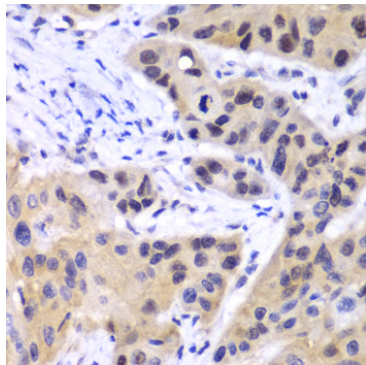
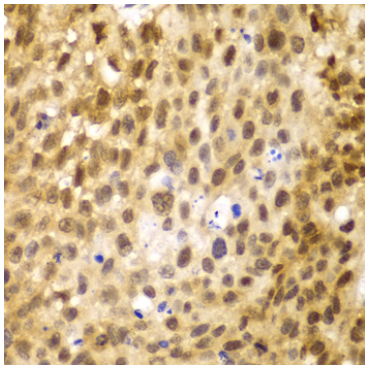
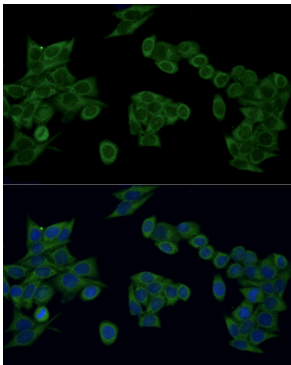
Immunoprecipitation analysis of 300 µg extracts of 293T cells using 3 µg IRF3 antibody (A11118). Western blot was performed from the immunoprecipitate using IRF3 (A11118) at a dilution of 1:1000.



Western blot analysis of lysates from 293T cells using IRF3 Rabbit pAb(A11118) at 1:1000 dilution. Secondary antibody: HRP Goat Anti-Rabbit IgG (H+L) (AS014) at 1:10000 dilution. Lysates/proteins: 25 µg per lane. Blocking buffer: 3% nonfat dry milk in TBST. Detection: ECL Basic Kit (RM00020). Exposure time: 1s.



Chromatin immunoprecipitation analysis of extracts of HCT116 cell line, using IRF3 rabbit polyclonal antibody (A11118) and rabbit IgG. The amount of immunoprecipitated DNA was checked by quantitative PCR. Histogram was constructed by the ratios of the immunoprecipitated DNA to the input.



## Validation Data

Immunofluorescence analysis of HeLa cells using IRF3 Rabbit pAb (A11118) at dilution of 1:100 (40x lens). Secondary antibody: ABflo® 488-conjugated Goat Anti-Rabbit IgG (H+L) (AS073) at 1:500 dilution. Blue: DAPI for nuclear staining.

Immunohistochemistry analysis of IRF3 in paraffin-embedded human lung cancer using IRF3 Rabbit pAb (A11118) at dilution of 1:100 (40x lens). Perform microwave antigen retrieval with 10 mM PBS buffer pH 7.2 before commencing with IHC staining protocol.

Immunohistochemistry analysis of IRF3 in paraffin-embedded human esophageal cancer using IRF3 Rabbit pAb (A11118) at dilution of 1:100 (40x lens). Perform microwave antigen retrieval with 10 mM PBS buffer pH 7.2 before commencing with IHC staining protocol.