

# TGF beta Receptor II (TGFB2) Rabbit pAb

Catalog No.: A11765 **3 Publications**

## Basic Information

**Observed MW**

90kDa

**Calculated MW**

65kDa

**Category**

Primary antibody

**Applications**

ELISA, WB, IHC-P, IF/ICC

**Cross-Reactivity**

Human, Mouse, Rat

## Background

The protein encoded by this gene is a transmembrane protein that has a protein kinase domain, forms a heterodimeric complex with TGF-beta receptor type-1, and binds TGF-beta. This receptor/ligand complex phosphorylates proteins, which then enter the nucleus and regulate the transcription of genes related to cell proliferation, cell cycle arrest, wound healing, immunosuppression, and tumorigenesis. Mutations in this gene have been associated with Marfan Syndrome, Loeys-Deitz Aortic Aneurysm Syndrome, and the development of various types of tumors. Alternatively spliced transcript variants encoding different isoforms have been characterized.

## Recommended Dilutions

|               |                |
|---------------|----------------|
| <b>WB</b>     | 1:500 - 1:1000 |
| <b>IHC-P</b>  | 1:50 - 1:200   |
| <b>IF/ICC</b> | 1:50 - 1:200   |

## Immunogen Information

**Gene ID**

7048

**Swiss Prot**

P37173

**Immunogen**

Recombinant fusion protein containing a sequence corresponding to amino acids 237-549 of human TGF beta Receptor II (TGFB2) (NP\_003233.4).

**Synonyms**

AAT3; FAA3; LDS2; MFS2; RIIC; LDS1B; LDS2B; TAAD2; TBR1; TBR-ii; TGFR-2; tbetaR-II; TGFbeta-R1; TGF beta Receptor II (TGFB2)

## Contact

|  |                           |
|--|---------------------------|
|  | 400-999-6126              |
|  | cn.market@abclonal.com.cn |
|  | www.abclonal.com.cn       |

## Product Information

**Source**

Rabbit

**Isotype**

IgG

**Purification**

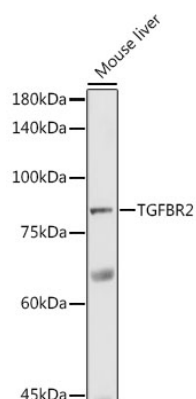
Affinity purification

**Storage**

Store at -20°C. Avoid freeze / thaw cycles.

Buffer: PBS with 0.01% thimerosal, 50% glycerol, pH7.3.

## Validation Data



Western blot analysis of lysates from Mouse liver, using TGF beta Receptor II (TGFB2) Rabbit pAb (A11765) at 1:1000 dilution.

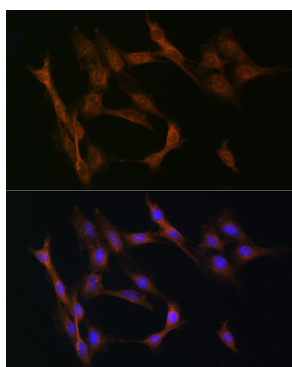
Secondary antibody: HRP Goat Anti-Rabbit IgG (H+L) (AS014) at 1:10000 dilution.

Lysates/proteins: 25µg per lane.

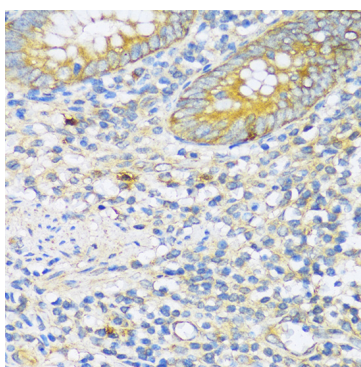
Blocking buffer: 3% nonfat dry milk in TBST.

Detection: ECL Enhanced Kit (RM00021).

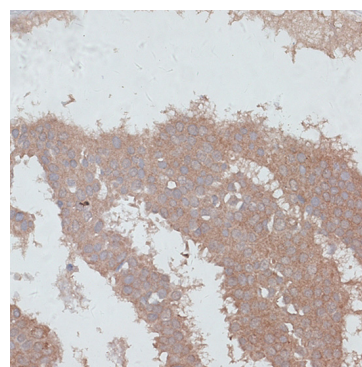
Exposure time: 90s.



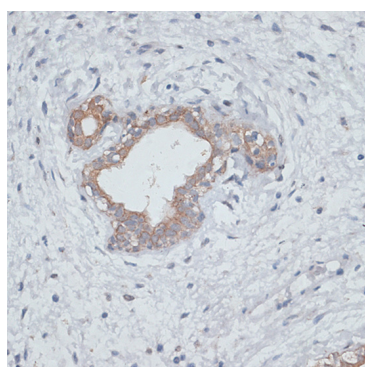
Immunofluorescence analysis of C6 cells using TGF beta Receptor II (TGF beta Receptor II (TGFB2)) Rabbit pAb (A11765) at dilution of 1:50 (40x lens). Secondary antibody: Cy3 Goat Anti-Rabbit IgG (H+L) (AS007) at 1:500 dilution. Blue: DAPI for nuclear staining.



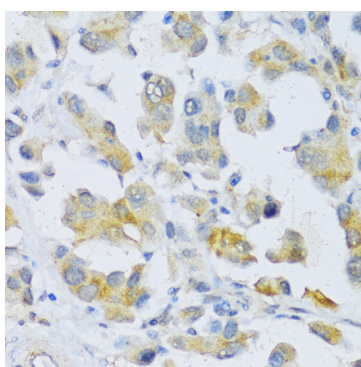
Immunohistochemistry analysis of TGF beta Receptor II (TGFB2) in paraffin-embedded human appendix using TGF beta Receptor II (TGFB2) Rabbit pAb (A11765) at dilution of 1:100 (40x lens). Perform microwave antigen retrieval with 10 mM PBS buffer pH 7.2 before commencing with IHC staining protocol.



Immunohistochemistry analysis of TGF beta Receptor II (TGFB2) in paraffin-embedded human breast cancer using TGF beta Receptor II (TGFB2) Rabbit pAb (A11765) at dilution of 1:100 (40x lens). Perform microwave antigen retrieval with 10 mM PBS buffer pH 7.2 before commencing with IHC staining protocol.



Immunohistochemistry analysis of TGF beta Receptor II (TGFB2) in paraffin-embedded human breast using TGF beta Receptor II (TGFB2) Rabbit pAb (A11765) at dilution of 1:100 (40x lens). Perform microwave antigen retrieval with 10 mM PBS buffer pH 7.2 before commencing with IHC staining protocol.



Immunohistochemistry analysis of TGF beta Receptor II (TGFB2) in paraffin-embedded human lung cancer using TGF beta Receptor II (TGFB2) Rabbit pAb (A11765) at dilution of 1:100 (40x lens). Perform microwave antigen retrieval with 10 mM PBS buffer pH 7.2 before commencing with IHC staining protocol.