

# [KO Validated] SERPINB5 Rabbit pAb

Catalog No.: A1179 **KO** **Validated** **1 Publications**

## Basic Information

### Observed MW

42kDa

### Calculated MW

42kDa

### Category

Primary antibody

### Applications

ELISA, WB

### Cross-Reactivity

Human, Mouse

## Background

Predicted to enable serine-type endopeptidase inhibitor activity. Predicted to be involved in negative regulation of endopeptidase activity. Predicted to act upstream of or within several processes, including extracellular matrix organization; prostate gland morphogenesis; and regulation of epithelial cell proliferation. Located in cytoplasm. Biomarker of hepatocellular carcinoma.

## Recommended Dilutions

**WB** 1:500 - 1:1000

## Immunogen Information

### Gene ID

5268

### Swiss Prot

P36952

### Immunogen

Recombinant fusion protein containing a sequence corresponding to amino acids 21-189 of human SERPINB5 (NP\_002630.2).

### Synonyms

PI5; maspin; B5

## Contact

 | 400-999-6126

 | [cn.market@abclonal.com.cn](mailto:cn.market@abclonal.com.cn)

 | [www.abclonal.com.cn](http://www.abclonal.com.cn)

## Product Information

### Source

Rabbit

### Isotype

IgG

### Purification

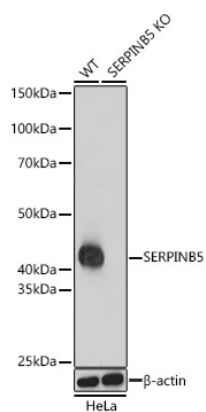
Affinity purification

### Storage

Store at -20°C. Avoid freeze / thaw cycles.

Buffer: PBS with 0.02% sodium azide, 50% glycerol, pH 7.3.

## Validation Data



Western blot analysis of lysates from wild type(WT) and SERPINB5 knockout (KO) HeLa(KO) cells, using [KO Validated] SERPINB5 Rabbit pAb (A1179) at 1:1000 dilution.

Secondary antibody: HRP Goat Anti-Rabbit IgG (H+L) (AS014) at 1:10000 dilution.

Lysates/proteins: 25μg per lane.

Blocking buffer: 3% nonfat dry milk in TBST.

Detection: ECL Basic Kit (RM00020).

Exposure time: 5s.