

KDM3A Rabbit pAb

Catalog No.: A11960 **2 Publications**

Basic Information

Observed MW

147kDa

Calculated MW

147kDa

Category

Primary antibody

Applications

ELISA, WB, IHC-P, IF/ICC

Cross-Reactivity

Human

Background

Enables androgen receptor binding activity; histone H3-methyl-lysine-9 demethylase activity; and iron ion binding activity. Involved in several processes, including androgen receptor signaling pathway; formaldehyde biosynthetic process; and histone H3-K9 demethylation. Located in nucleoplasm. Implicated in cervical cancer and colon cancer. Biomarker of Ewing sarcoma; hepatocellular carcinoma; nasopharynx carcinoma; and prostate cancer.

Recommended Dilutions

WB	1:500 - 1:1000
IHC-P	1:50 - 1:200
IF/ICC	1:50 - 1:200

Immunogen Information

Gene ID

55818

Swiss Prot

Q9Y4C1

Immunogen

A synthetic peptide corresponding to a sequence within amino acids 975-1283 of human KDM3A (NP_060903.2).

Synonyms

TSGA; JMJD1; JHDM2A; JHMD2A; JMJD1A; KDM3A

Contact

☎	400-999-6126
✉	cn.market@abclonal.com.cn
🌐	www.abclonal.com.cn

Product Information

Source

Rabbit

Isotype

IgG

Purification

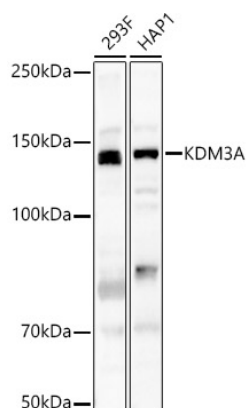
Affinity purification

Storage

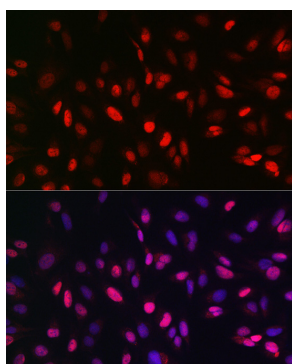
Store at -20°C. Avoid freeze / thaw cycles.

Buffer: PBS with 0.05% proclin300, 50% glycerol, pH7.3.

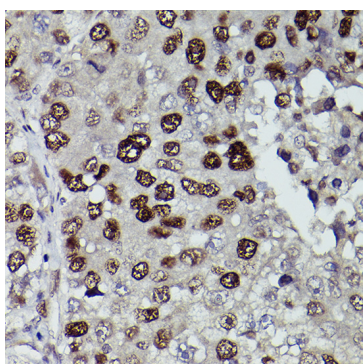
Validation Data



Western blot analysis of various lysates, using KDM3A Rabbit pAb (A11960) at 1:500 dilution.
Secondary antibody: HRP Goat Anti-Rabbit IgG (H+L) (AS014) at 1:10000 dilution.
Lysates/proteins: 25µg per lane.
Blocking buffer: 3% nonfat dry milk in TBST.
Detection: ECL Basic Kit (RM00020).
Exposure time: 90s.



Immunofluorescence analysis of U2OS cells using KDM3A Rabbit pAb (A11960) at dilution of 1:100 (40x lens). Blue: DAPI for nuclear staining.



Immunohistochemistry analysis of paraffin-embedded human liver cancer using KDM3A Rabbit pAb (A11960) at dilution of 1:100 (40x lens). Perform high pressure antigen retrieval with 10 mM citrate buffer pH 6.0 before commencing with IHC staining protocol.