

XPOT Rabbit pAb

Catalog No.: A12043 **1 Publications**

Basic Information

Observed MW

100kDa

Calculated MW

110kDa

Category

Primary antibody

Applications

ELISA, WB

Cross-Reactivity

Human, Mouse, Rat

Background

This gene encodes a protein belonging to the RAN-GTPase exportin family that mediates export of tRNA from the nucleus to the cytoplasm. Translocation of tRNA to the cytoplasm occurs once exportin has bound both tRNA and GTP-bound RAN.

Recommended Dilutions

WB 1:500 - 1:2000

Immunogen Information

Gene ID

11260

Swiss Prot

O43592

Immunogen

Recombinant fusion protein containing a sequence corresponding to amino acids 1-200 of human XPOT (NP_009166.2).

Synonyms

XPO3; XPOT

Contact

☎ | 400-999-6126

✉ | cn.market@abclonal.com.cn

🌐 | www.abclonal.com.cn

Product Information

Source

Rabbit

Isotype

IgG

Purification

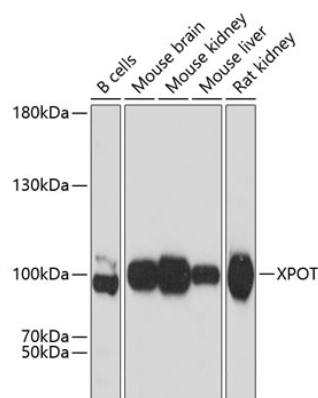
Affinity purification

Storage

Store at -20°C. Avoid freeze / thaw cycles.

Buffer: PBS with 0.01% thimerosal, 50% glycerol, pH7.3.

Validation Data



Western blot analysis of various lysates using XPOT Rabbit pAb (A12043) at 1:3000 dilution.
Secondary antibody: HRP Goat Anti-Rabbit IgG (H+L) (AS014) at 1:10000 dilution.
Lysates/proteins: 25µg per lane.
Blocking buffer: 3% nonfat dry milk in TBST.
Detection: ECL Basic Kit (RM00020).
Exposure time: 10s.