

WIF1 Rabbit pAb

Catalog No.: A12969 **2 Publications**

Basic Information

Observed MW

42kDa

Calculated MW

42kDa

Category

Primary antibody

Applications

ELISA, WB, IHC-P

Cross-Reactivity

Human, Mouse, Rat

Background

The protein encoded by this gene functions to inhibit WNT proteins, which are extracellular signaling molecules that play a role in embryonic development. This protein contains a WNT inhibitory factor (WIF) domain and five epidermal growth factor (EGF)-like domains, and is thought to be involved in mesoderm segmentation. This gene functions as a tumor suppressor gene, and has been found to be epigenetically silenced in various cancers.

Recommended Dilutions

WB 1:1000 - 1:2000

IHC-P 1:50 - 1:200

Immunogen Information

Gene ID

11197

Swiss Prot

Q9Y5W5

Immunogen

Recombinant fusion protein containing a sequence corresponding to amino acids 29-220 of human WIF1 (NP_009122.2).

Synonyms

WIF-1; WIF1

Contact

☎ | 400-999-6126

✉ | cn.market@abclonal.com.cn

🌐 | www.abclonal.com.cn

Product Information

Source

Rabbit

Isotype

IgG

Purification

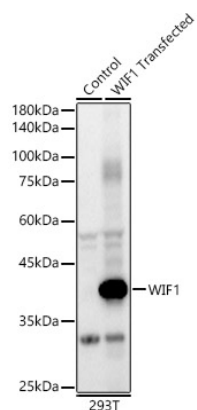
Affinity purification

Storage

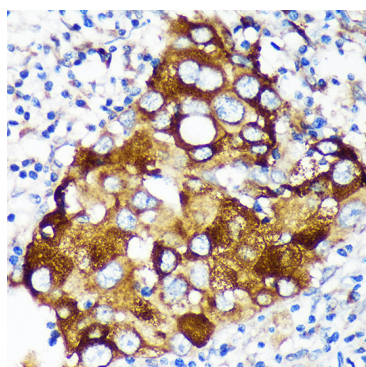
Store at -20°C. Avoid freeze / thaw cycles.

Buffer: PBS with 0.02% sodium azide, 50% glycerol, pH 7.3.

Validation Data



Western blot analysis of lysates from wild type (WT) and 293T cells transfected with WIF1 using WIF1 Rabbit pAb (A12969) at 1:500 dilution.
Secondary antibody: HRP Goat Anti-Rabbit IgG (H+L) (AS014) at 1:10000 dilution.
Lysates/proteins: 25µg per lane.
Blocking buffer: 3% nonfat dry milk in TBST.
Detection: ECL Basic Kit (RM00020).
Exposure time: 30s.



Immunohistochemistry analysis of WIF1 in paraffin-embedded Human breast cancer using WIF1 Rabbit pAb (A12969) at dilution of 1:100 (40x lens). Perform microwave antigen retrieval with 10 mM PBS buffer pH 7.2 before commencing with IHC staining protocol.