

SREBP2 Rabbit pAb

Catalog No.: A13049 **9 Publications**

Basic Information

Observed MW

58kDa

Calculated MW

124kDa

Category

Primary antibody

Applications

ELISA, WB, IHC-P

Cross-Reactivity

Human, Mouse, Rat

Background

This gene encodes a member of the a ubiquitously expressed transcription factor that controls cholesterol homeostasis by regulating transcription of sterol-regulated genes. The encoded protein contains a basic helix-loop-helix-leucine zipper (bHLH-Zip) domain and binds the sterol regulatory element 1 motif. Alternate splicing results in multiple transcript variants.

Recommended Dilutions

WB 1:100 - 1:500

IHC-P 1:50 - 1:200

Immunogen Information

Gene ID

6721

Swiss Prot

Q12772

Immunogen

Recombinant fusion protein containing a sequence corresponding to amino acids 1-220 of human SREBF2 (NP_004590.2).

Synonyms

SREBP2; bHLHd2; SREBP-2

Contact

☎ | 400-999-6126

✉ | cn.market@abclonal.com.cn

🌐 | www.abclonal.com.cn

Product Information

Source

Rabbit

Isotype

IgG

Purification

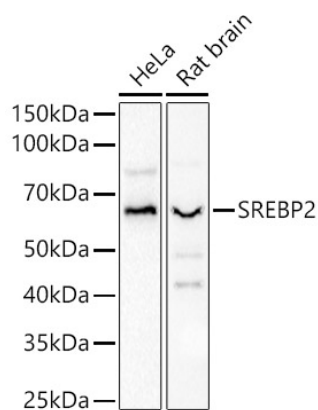
Affinity purification

Storage

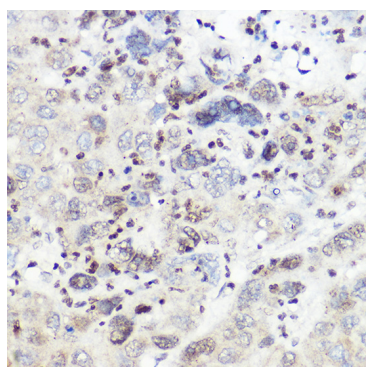
Store at -20°C. Avoid freeze / thaw cycles.

Buffer: PBS with 0.09% Sodium azide, 50% glycerol, pH7.3.

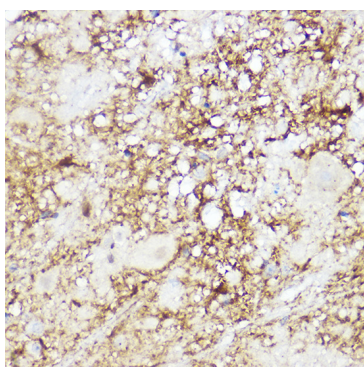
Validation Data



Western blot analysis of various lysates, using SREBP2 Rabbit pAb (A13049) at 1:500 dilution.
Secondary antibody: HRP Goat Anti-Rabbit IgG (H+L) (AS014) at 1:10000 dilution.
Lysates/proteins: 25µg per lane.
Blocking buffer: 3% nonfat dry milk in TBST.
Detection: ECL Basic Kit (RM00020).
Exposure time: 20s.



Immunohistochemistry analysis of paraffin-embedded human liver cancer using SREBP2 Rabbit pAb (A13049) at dilution of 1:50 (40x lens). Perform high pressure antigen retrieval with 10 mM citrate buffer pH 6.0 before commencing with IHC staining protocol.



Immunohistochemistry analysis of paraffin-embedded mouse spinal cord using SREBP2 Rabbit pAb (A13049) at dilution of 1:50 (40x lens). Perform high pressure antigen retrieval with 10 mM citrate buffer pH 6.0 before commencing with IHC staining protocol.