

# TFAM Rabbit pAb

Catalog No.: A13552 **18 Publications**

## Basic Information

**Observed MW**

25kDa

**Calculated MW**

29kDa

**Category**

Primary antibody

**Applications**

ELISA, WB, IHC-P, IF/ICC, ChIP

**Cross-Reactivity**

Human, Mouse, Rat

## Background

This gene encodes a key mitochondrial transcription factor containing two high mobility group motifs. The encoded protein also functions in mitochondrial DNA replication and repair. Sequence polymorphisms in this gene are associated with Alzheimer's and Parkinson's diseases. There are pseudogenes for this gene on chromosomes 6, 7, and 11. Alternative splicing results in multiple transcript variants.

## Recommended Dilutions

<b>WB</b>	1:500 - 1:1000
<b>IHC-P</b>	1:50 - 1:200
<b>IF/ICC</b>	1:50 - 1:200
<b>ChIP</b>	5µg antibody for 10µg-15µg of Chromatin

## Immunogen Information

**Gene ID**

7019

**Swiss Prot**

Q00059

**Immunogen**

A synthetic peptide corresponding to a sequence within amino acids 100-200 of human TFAM (NP\_003192.1).

**Synonyms**

TCF6; MTTF1; MTTFA; TCF6L1; TCF6L2; TCF6L3; MTDPS15; TFAM

## Contact

		400-999-6126
		<a href="mailto:cn.market@abclonal.com.cn">cn.market@abclonal.com.cn</a>
		<a href="http://www.abclonal.com.cn">www.abclonal.com.cn</a>

## Product Information

**Source**

Rabbit

**Isotype**

IgG

**Purification**

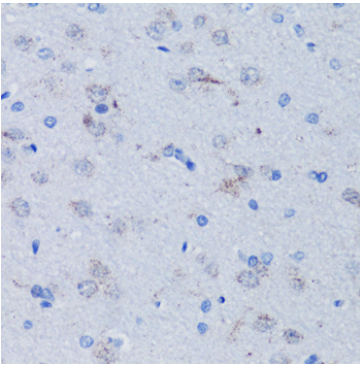
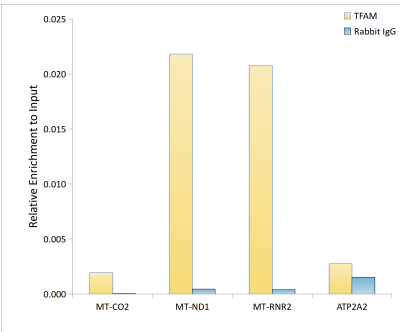
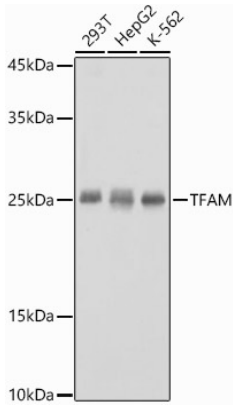
Affinity purification

**Storage**

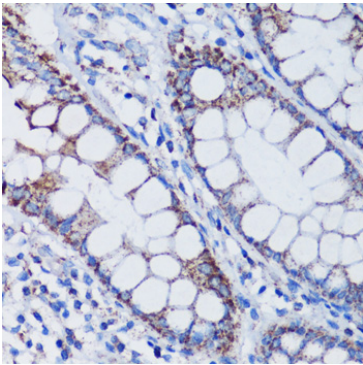
Store at -20°C. Avoid freeze / thaw cycles.

Buffer: PBS with 0.05% proclin300, 50% glycerol, pH7.3.

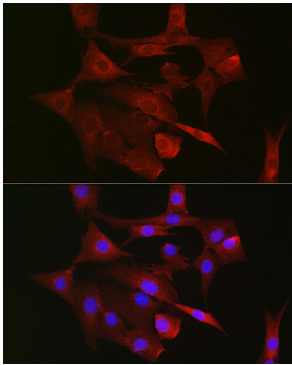
Validation Data



Immunohistochemistry analysis of paraffin-embedded rat brain using TFAM Rabbit pAb (A13552) at dilution of 1:100 (40x lens). Perform microwave antigen retrieval with 10 mM PBS buffer pH 7.2 before commencing with IHC staining protocol.



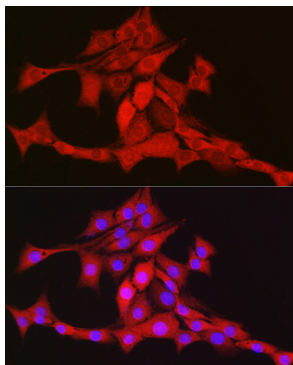
Immunohistochemistry analysis of paraffin-embedded human colon using TFAM Rabbit pAb (A13552) at dilution of 1:100 (40x lens). Perform microwave antigen retrieval with 10 mM PBS buffer pH 7.2 before commencing with IHC staining protocol.



Immunofluorescence analysis of NIH/3T3 cells using TFAM Rabbit pAb (A13552) at dilution of 1:100 (40x lens). Secondary antibody: Cy3 Goat Anti-Rabbit IgG (H+L) (AS007) at 1:500 dilution. Blue: DAPI for nuclear staining.

## Validation Data

---



Immunofluorescence analysis of PC-12 cells using TFAM Rabbit pAb (A13552) at dilution of 1:100 (40x lens). Secondary antibody: Cy3 Goat Anti-Rabbit IgG (H+L) (AS007) at 1:500 dilution. Blue: DAPI for nuclear staining.