

Mitofusin 2 Rabbit pAb

Catalog No.: A13606 **3 Publications**

Basic Information

Observed MW

80kDa

Calculated MW

68kDa/86kDa

Category

Primary antibody

Applications

ELISA, WB, IHC-P

Cross-Reactivity

Human, Mouse, Rat

Background

Predicted to enable several functions, including GTP binding activity; GTPase activity; and enzyme binding activity. Involved in mitochondrial fusion; parkin-mediated stimulation of mitophagy in response to mitochondrial depolarization; and positive regulation of cold-induced thermogenesis. Acts upstream of or within blastocyst formation and camera-type eye morphogenesis. Located in microtubule cytoskeleton and mitochondrion. Is expressed in several structures, including brain; early conceptus; eye; heart; and oocyte. Used to study Charcot-Marie-Tooth disease type 2A2A. Human ortholog(s) of this gene implicated in Charcot-Marie-Tooth disease; Charcot-Marie-Tooth disease type 2A2A; Charcot-Marie-Tooth disease type 2A2B; and Charcot-Marie-Tooth disease type 6. Orthologous to human MFN2 (mitofusin 2).

Recommended Dilutions

WB	1:500 - 1:1000
IHC-P	1:50 - 1:200

Immunogen Information

Gene ID

170731

Swiss Prot

Immunogen

Recombinant fusion protein containing a sequence corresponding to amino acids 70-260 of mouse Mitofusin 2 (NP_573464.2).

Synonyms

Fzo; D630023P19Rik; Mitofusin 2

Contact

☎ | 400-999-6126

✉ | cn.market@abclonal.com.cn

🌐 | www.abclonal.com.cn

Product Information

Source

Rabbit

Isotype

IgG

Purification

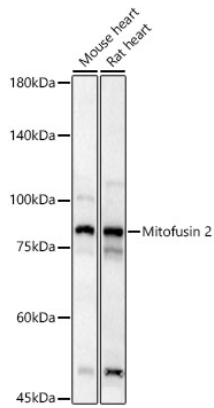
Affinity purification

Storage

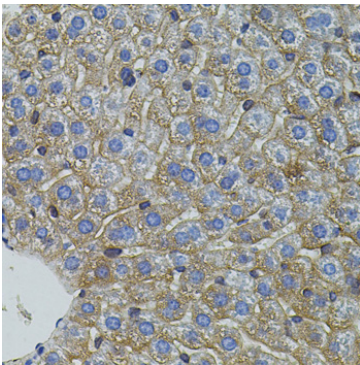
Store at -20°C. Avoid freeze / thaw cycles.

Buffer: PBS with 0.05% proclin300, 50% glycerol, pH7.3.

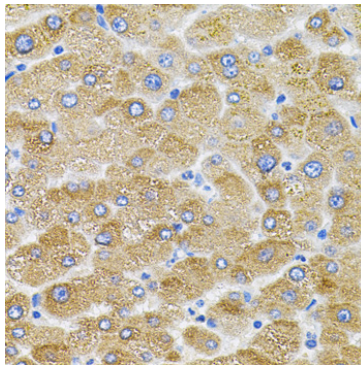
Validation Data



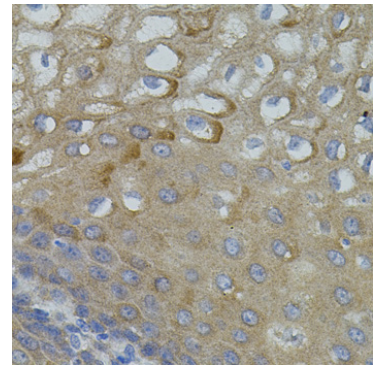
Western blot analysis of various lysates, using Mitofusin 2 Rabbit pAb (A13606) at 1:1000 dilution.
Secondary antibody: HRP Goat Anti-Rabbit IgG (H+L) (AS014) at 1:10000 dilution.
Lysates/proteins: 25µg per lane.
Blocking buffer: 3% nonfat dry milk in TBST.
Detection: ECL Basic Kit (RM00020).
Exposure time: 60s.



Immunohistochemistry analysis of paraffin-embedded mouse liver using Mitofusin 2 Rabbit pAb (A13606) (40x lens). Perform microwave antigen retrieval with 10 mM PBS buffer pH 7.2 before commencing with IHC staining protocol.



Immunohistochemistry analysis of paraffin-embedded human liver damage using Mitofusin 2 Rabbit pAb (A13606) (40x lens). Perform microwave antigen retrieval with 10 mM PBS buffer pH 7.2 before commencing with IHC staining protocol.



Immunohistochemistry analysis of paraffin-embedded human esophagus using Mitofusin 2 Rabbit pAb (A13606) (40x lens). Perform microwave antigen retrieval with 10 mM PBS buffer pH 7.2 before commencing with IHC staining protocol.