

MUC2 Rabbit pAb

Catalog No.: A14659

22 Publications

Basic Information

Observed MW

Calculated MW

551kDa

Category

Primary antibody

Applications

ELISA, WB, IHC-P, IF/ICC

Cross-Reactivity

Human, Mouse, Rat

Background

This gene encodes a member of the mucin protein family. Mucins are high molecular weight glycoproteins produced by many epithelial tissues. The protein encoded by this gene is secreted and forms an insoluble mucous barrier that protects the gut lumen. The protein polymerizes into a gel of which 80% is composed of oligosaccharide side chains by weight. The protein features a central domain containing tandem repeats rich in threonine and proline that varies between 50 and 115 copies in different individuals. Downregulation of this gene has been observed in patients with Crohn disease and ulcerative colitis.

Recommended Dilutions

WB	1:500 - 1:1000
IHC-P	1:500 - 1:1000
IF/ICC	1:50 - 1:200

Immunogen Information

Gene ID

4583

Swiss Prot

Q02817

Immunogen

Recombinant fusion protein containing a sequence corresponding to amino acids 850-1270 of human MUC2 (NP_002448.4).

Synonyms

MLP; SMUC; MUC-2; MUC2

Contact

☎		400-999-6126
✉		cn.market@abclonal.com.cn
🌐		www.abclonal.com.cn

Product Information

Source

Rabbit

Isotype

IgG

Purification

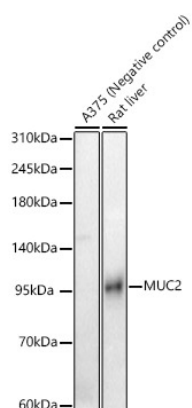
Affinity purification

Storage

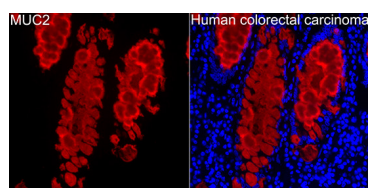
Store at -20°C. Avoid freeze / thaw cycles.

Buffer: PBS with 0.05% proclin300, 50% glycerol, pH7.3.

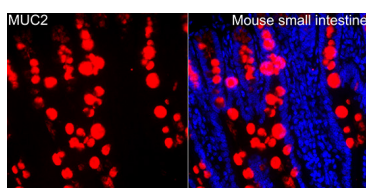
Validation Data



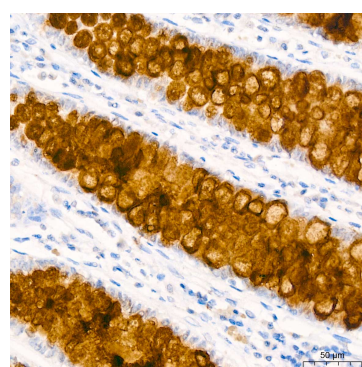
Western blot analysis of various lysates, using MUC2 Rabbit pAb (A14659) at 1:1000 dilution.
Secondary antibody: HRP Goat Anti-Rabbit IgG (H+L) (AS014) at 1:10000 dilution.
Lysates/proteins: 25ug per lane.
Blocking buffer: 3% nonfat dry milk in TBST.
Detection: ECL Basic Kit (RM00020).
Exposure time: 180s.



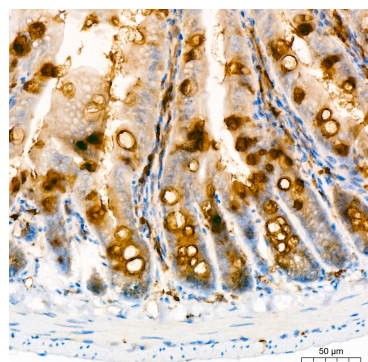
Immunofluorescence analysis of Human colorectal carcinoma using MUC2 Rabbit pAb(A14659) at a dilution of 1:200 (40x lens). Secondary antibody: Cy3 Goat Anti-Rabbit IgG (H+L)(AS007) at 1:500 dilution. Blue: DAPI for nuclear staining. Perform high pressure antigen retrieval with 0.01 M citrate buffer (pH 6.0) prior to IF staining.



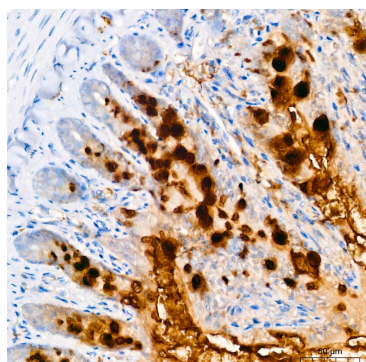
Immunofluorescence analysis of Mouse small intestine using MUC2 Rabbit pAb(A14659) at a dilution of 1:200 (40x lens). Secondary antibody: Cy3 Goat Anti-Rabbit IgG (H+L)(AS007) at 1:500 dilution. Blue: DAPI for nuclear staining. Perform high pressure antigen retrieval with 0.01 M citrate buffer (pH 6.0) prior to IF staining.



Immunohistochemistry analysis of MUC2 in paraffin-embedded human colon carcinoma using MUC2 Rabbit pAb (A14659) at dilution of 1:1000 (40x lens). Perform high pressure antigen retrieval with 10 mM Tris/EDTA buffer pH 9.0 before commencing with IHC staining protocol.



Immunohistochemistry analysis of MUC2 in paraffin-embedded mouse intestine using MUC2 Rabbit pAb (A14659) at dilution of 1:1000 (40x lens). Perform high pressure antigen retrieval with 10 mM Tris/EDTA buffer pH 9.0 before commencing with IHC staining protocol.



Immunohistochemistry analysis of MUC2 in paraffin-embedded rat colon using MUC2 Rabbit pAb (A14659) at dilution of 1:1000 (40x lens). Perform high pressure antigen retrieval with 10 mM Tris/EDTA buffer pH 9.0 before commencing with IHC staining protocol.