

# NDUFA5 Rabbit pAb

Catalog No.: A14751

## Basic Information

### Observed MW

13kDa

### Calculated MW

13kDa

### Category

Primary antibody

### Applications

ELISA, WB, IHC-P, IF/ICC

### Cross-Reactivity

Human, Mouse, Rat

## Background

This nuclear gene encodes a conserved protein that comprises the B13 subunit of complex I of the mitochondrial respiratory chain. The encoded protein localizes to the inner mitochondrial membrane, where it is thought to aid in the transfer of electrons from NADH to ubiquinone. Alternative splicing results in multiple transcript variants. There are numerous pseudogenes of this gene on chromosomes 1, 3, 6, 8, 9, 11, 12, and 16.

## Recommended Dilutions

|        |                |
|--------|----------------|
| WB     | 1:500 - 1:1000 |
| IHC-P  | 1:50 - 1:100   |
| IF/ICC | 1:50 - 1:100   |

## Immunogen Information

### Gene ID

4698

### Swiss Prot

Q16718

### Immunogen

Recombinant fusion protein containing a sequence corresponding to amino acids 1-116 of human NDUFA5 (NP\_004991.1).

### Synonyms

B13; NUFM; UQOR13; CI-13kB; CI-13KD-B; NDUFA5

## Contact

|   |                           |
|---|---------------------------|
| ☎ | 400-999-6126              |
| ✉ | cn.market@abclonal.com.cn |
| 🌐 | www.abclonal.com.cn       |

## Product Information

### Source

Rabbit

### Isotype

IgG

### Purification

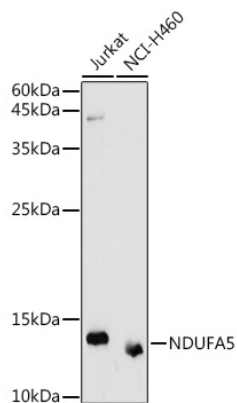
Affinity purification

### Storage

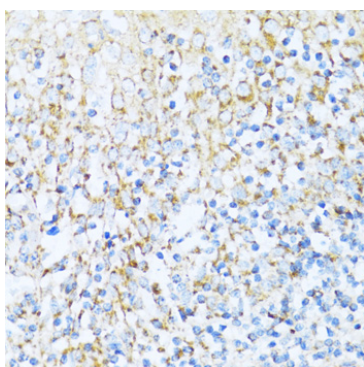
Store at -20°C. Avoid freeze / thaw cycles.

Buffer: PBS with 0.02% sodium azide, 50% glycerol, pH7.3.

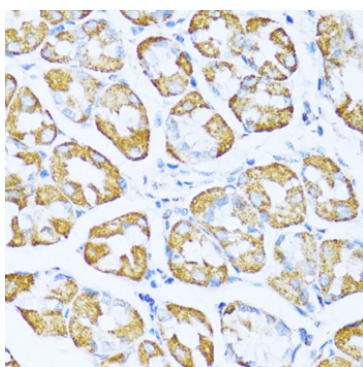
## Validation Data



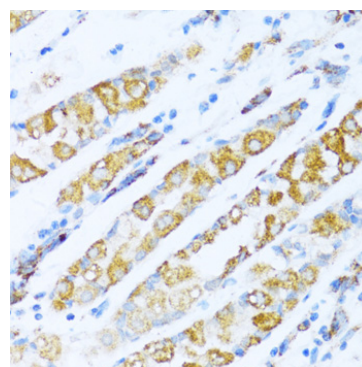
Western blot analysis of extracts of various cell lines, using NDUFA5 antibody (A14751) at 1:1000 dilution.  
Secondary antibody: HRP Goat Anti-Rabbit IgG (H+L) (AS014) at 1:10000 dilution.  
Lysates/proteins: 25µg per lane.  
Blocking buffer: 3% nonfat dry milk in TBST.  
Detection: ECL Basic Kit (RM00020).  
Exposure time: 30s.



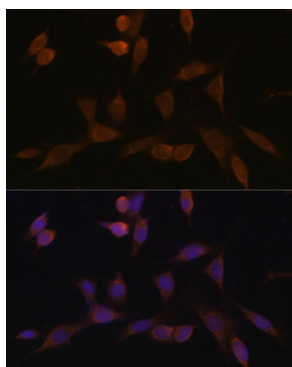
Immunohistochemistry analysis of paraffin-embedded human tonsil using NDUFA5 antibody (A14751) at dilution of 1:100 (40x lens). Perform microwave antigen retrieval with 10 mM PBS buffer pH 7.2 before commencing with IHC staining protocol.



Immunohistochemistry analysis of paraffin-embedded human stomach using NDUFA5 antibody (A14751) at dilution of 1:100 (40x lens). Perform microwave antigen retrieval with 10 mM PBS buffer pH 7.2 before commencing with IHC staining protocol.



Immunohistochemistry analysis of paraffin-embedded human gastric cancer using NDUFA5 antibody (A14751) at dilution of 1:100 (40x lens). Perform microwave antigen retrieval with 10 mM PBS buffer pH 7.2 before commencing with IHC staining protocol.



Immunofluorescence analysis of NIH-3T3 cells using NDUFA5 Polyclonal Antibody (A14751) at dilution of 1:100 (40x lens). Blue: DAPI for nuclear staining.