

[KO Validated] NDUFC2 Rabbit pAb

Catalog No.: A15073 **KO** **Validated** **3 Publications**

Basic Information

Observed MW

14kDa

Calculated MW

14kDa

Category

Primary antibody

Applications

ELISA, WB

Cross-Reactivity

Human, Mouse, Rat

Background

Involved in mitochondrial respiratory chain complex I assembly. Located in mitochondrion. Part of mitochondrial respiratory chain complex I. Implicated in nuclear type mitochondrial complex I deficiency.

Recommended Dilutions

WB 1:500 - 1:2000

Immunogen Information

Gene ID

4718

Swiss Prot

O95298

Immunogen

A synthetic peptide corresponding to a sequence within amino acids 1-100 of human NDUFC2 (NP_004540.1).

Synonyms

HLC-1; B14.5b; MC1DN36; NADHDH2; CI-B14.5b; C2

Contact

 | 400-999-6126

 | cn.market@abclonal.com.cn

 | www.abclonal.com.cn

Product Information

Source

Rabbit

Isotype

IgG

Purification

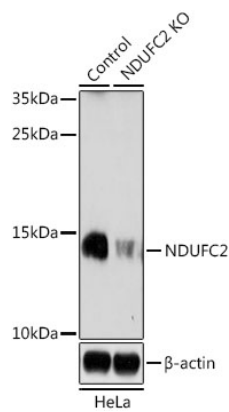
Affinity purification

Storage

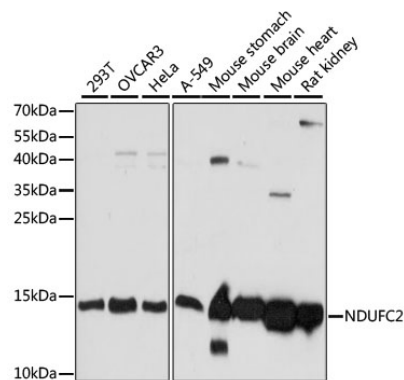
Store at -20°C. Avoid freeze / thaw cycles.

Buffer: PBS with 0.01% thimerosal, 50% glycerol, pH7.3.

Validation Data



Western blot analysis of lysates from wild type (WT) and NDUFC2 knockout (KO) HeLa cells, using [KO Validated] NDUFC2 Rabbit pAb (A15073) at 1:1000 dilution.
Secondary antibody: HRP Goat Anti-Rabbit IgG (H+L) (AS014) at 1:10000 dilution.
Lysates/proteins: 25µg per lane.
Blocking buffer: 3% nonfat dry milk in TBST.
Detection: ECL Enhanced Kit (RM00021).
Exposure time: 3min.



Western blot analysis of various lysates using [KO Validated] NDUFC2 Rabbit pAb (A15073) at 1:1000 dilution.
Secondary antibody: HRP Goat Anti-Rabbit IgG (H+L) (AS014) at 1:10000 dilution.
Lysates/proteins: 25µg per lane.
Blocking buffer: 3% nonfat dry milk in TBST.
Detection: ECL Basic Kit (RM00020).
Exposure time: 5s.