

COL2A1 Rabbit pAb

Catalog No.: A1560 **24 Publications**

Basic Information

Observed MW

141kDa

Calculated MW

142kDa

Category

Primary antibody

Applications

ELISA, WB, IF/ICC, IHC-P

Cross-Reactivity

Human, Mouse

Background

This gene encodes the alpha-1 chain of type II collagen, a fibrillar collagen found in cartilage and the vitreous humor of the eye. Mutations in this gene are associated with achondrogenesis, chondrodysplasia, early onset familial osteoarthritis, SED congenita, Langer-Saldino achondrogenesis, Kniest dysplasia, Stickler syndrome type I, and spondyloepimetaphyseal dysplasia Strudwick type. In addition, defects in processing chondrocalcin, a calcium binding protein that is the C-propeptide of this collagen molecule, are also associated with chondrodysplasia. There are two transcripts identified for this gene.

Recommended Dilutions

WB	1:500 - 1:1000
IF/ICC	1:50 - 1:200
IHC-P	1:1000 - 1:5000

Immunogen Information

Gene ID

1280

Swiss Prot

P02458

Immunogen

A synthetic peptide corresponding to a sequence within amino acids 1220-1282 of human COL2A1 (NP_001835.3).

Synonyms

AOM; ANFH; SEDC; STL1; COL11A3; COL2A1

Contact

	400-999-6126
	cn.market@abclonal.com.cn
	www.abclonal.com.cn

Product Information

Source

Rabbit

Isotype

IgG

Purification

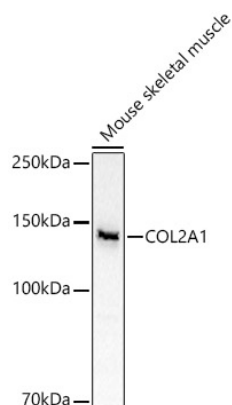
Affinity purification

Storage

Store at -20°C. Avoid freeze / thaw cycles.

Buffer: PBS with 0.05% proclin300, 50% glycerol, pH7.3.

Validation Data



Western blot analysis of lysates from Mouse skeletal muscle, using COL2A1 Rabbit pAb (A1560) at 1:1000 dilution.

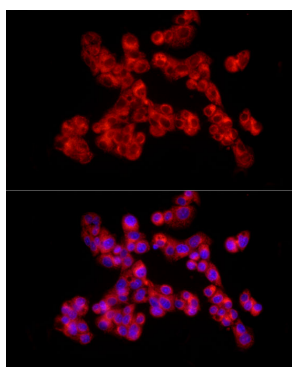
Secondary antibody: HRP Goat Anti-Rabbit IgG (H+L) (AS014) at 1:10000 dilution.

Lysates/proteins: 25µg per lane.

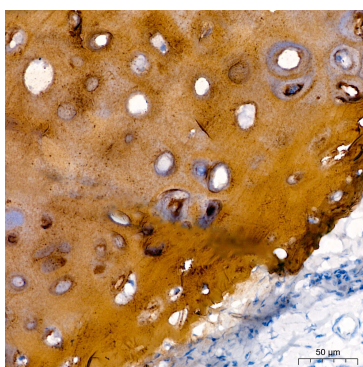
Blocking buffer: 3% nonfat dry milk in TBST.

Detection: ECL Basic Kit (RM00020).

Exposure time: 10s.



Immunofluorescence analysis of HepG2 cells using COL2A1 Rabbit pAb (A1560) at dilution of 1:100 (40x lens). Secondary antibody: Cy3 Goat Anti-Rabbit IgG (H+L) (AS007) at 1:500 dilution. Blue: DAPI for nuclear staining.



Immunohistochemistry analysis of paraffin-embedded Human cartilage tissue using COL2A1 Rabbit pAb (A1560) at a dilution of 1:3000 (40x lens). High pressure antigen retrieval performed with 0.01M Citrate Buffer(pH 6.0) prior to IHC staining.