

RHCG Rabbit pAb

Catalog No.: A16124

Basic Information

Observed MW

53kDa

Calculated MW

53kDa

Category

Primary antibody

Applications

ELISA, WB

Cross-Reactivity

Human, Mouse, Rat

Background

Enables ammonium transmembrane transporter activity; ankyrin binding activity; and identical protein binding activity. Involved in ammonium transmembrane transport; cellular ion homeostasis; and transepithelial ammonium transport. Located in apical plasma membrane and basolateral plasma membrane. Is integral component of plasma membrane.

Recommended Dilutions

WB 1:500 - 1:2000

Immunogen Information

Gene ID

51458

Swiss Prot

Q9UBD6

Immunogen

Recombinant fusion protein containing a sequence corresponding to amino acids 240-479 of human RHCG (NP_057405.1).

Synonyms

RHGK; PDRC2; C15orf6; SLC42A3; RHCG

Contact

☎ | 400-999-6126

✉ | cn.market@abclonal.com.cn

🌐 | www.abclonal.com.cn

Product Information

Source

Rabbit

Isotype

IgG

Purification

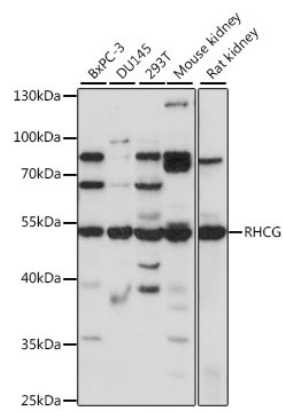
Affinity purification

Storage

Store at -20°C. Avoid freeze / thaw cycles.

Buffer: PBS with 0.01% thimerosal, 50% glycerol, pH7.3.

Validation Data



Western blot analysis of various lysates using RHCG Rabbit pAb (A16124) at 1:1000 dilution.
Secondary antibody: HRP Goat Anti-Rabbit IgG (H+L) (AS014) at 1:10000 dilution.
Lysates/proteins: 25µg per lane.
Blocking buffer: 3% nonfat dry milk in TBST.
Detection: ECL Basic Kit (RM00020).
Exposure time: 30s.