

# [KO Validated] Insulin-degrading enzyme (IDE) Rabbit pAb

Catalog No.: A1630 **KO** **Validated** **4 Publications**

## Basic Information

### Observed MW

118kDa

### Calculated MW

118kDa

### Category

Primary antibody

### Applications

ELISA, WB, IF/ICC

### Cross-Reactivity

Human, Mouse

## Background

This gene encodes a zinc metallopeptidase that degrades intracellular insulin, and thereby terminates insulin's activity, as well as participating in intercellular peptide signalling by degrading diverse peptides such as glucagon, amylin, bradykinin, and kallidin. The preferential affinity of this enzyme for insulin results in insulin-mediated inhibition of the degradation of other peptides such as beta-amyloid. Deficiencies in this protein's function are associated with Alzheimer's disease and type 2 diabetes mellitus but mutations in this gene have not been shown to be causative for these diseases. This protein localizes primarily to the cytoplasm but in some cell types localizes to the extracellular space, cell membrane, peroxisome, and mitochondrion. Alternative splicing results in multiple transcript variants encoding distinct isoforms. Additional transcript variants have been described but have not been experimentally verified.

## Recommended Dilutions

**WB** 1:500 - 1:2000

**IF/ICC** 1:10 - 1:100

## Immunogen Information

### Gene ID

3416

### Swiss Prot

P14735

### Immunogen

Recombinant fusion protein containing a sequence corresponding to amino acids 1-250 of human Insulin-degrading enzyme (Insulin-degrading enzyme (IDE)) (NP\_004960.2).

### Synonyms

INSULYSIN; E)

## Contact

 | 400-999-6126

 | [cn.market@abclonal.com.cn](mailto:cn.market@abclonal.com.cn)

 | [www.abclonal.com.cn](http://www.abclonal.com.cn)

## Product Information

### Source

Rabbit

### Isotype

IgG

### Purification

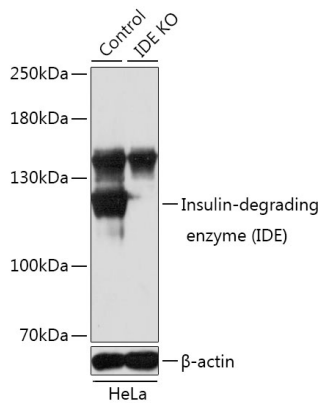
Affinity purification

### Storage

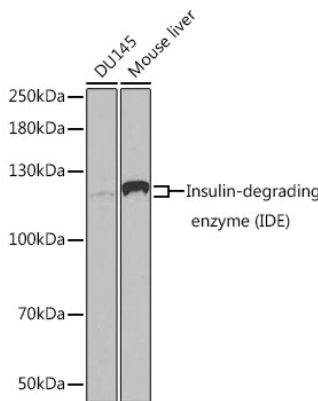
Store at -20°C. Avoid freeze / thaw cycles.

Buffer: PBS with 0.02% sodium azide, 50% glycerol, pH7.3.

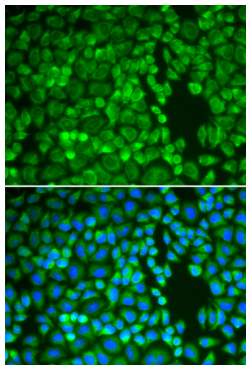
Validation Data



Western blot analysis of extracts from normal (control) and Insulin-degrading enzyme (Insulin-degrading enzyme (IDE)) knockout (KO) HeLa cells, using Insulin-degrading enzyme (Insulin-degrading enzyme (IDE)) antibody (A1630) at 1:1000 dilution.  
Secondary antibody: HRP Goat Anti-Rabbit IgG (H+L) (AS014) at 1:10000 dilution.  
Lysates/proteins: 25 $\mu$ g per lane.  
Blocking buffer: 3% nonfat dry milk in TBST.  
Detection: ECL Basic Kit (RM00020).  
Exposure time: 10s.



Western blot analysis of extracts of various cell lines, using Insulin-degrading enzyme (Insulin-degrading enzyme (IDE)) antibody (A1630) at 1:1000 dilution.  
Secondary antibody: HRP Goat Anti-Rabbit IgG (H+L) (AS014) at 1:10000 dilution.  
Lysates/proteins: 25 $\mu$ g per lane.  
Blocking buffer: 3% nonfat dry milk in TBST.  
Detection: ECL Basic Kit (RM00020).



Immunofluorescence analysis of A549 cells using Insulin-degrading enzyme (Insulin-degrading enzyme (IDE)) antibody (A1630).  
Blue: DAPI for nuclear staining.