

Slc31a2 Rabbit pAb

Catalog No.: A16362 **1 Publications**

Basic Information

Observed MW

16kDa

Calculated MW

16kDa

Category

Primary antibody

Applications

ELISA, WB

Cross-Reactivity

Mouse

Background

Acts upstream of or within cellular copper ion homeostasis and regulation of copper ion transmembrane transport. Located in late endosome; membrane; and recycling endosome. Is expressed in brain; retina nuclear layer; and urinary system. Orthologous to human SLC31A2 (solute carrier family 31 member 2).

Recommended Dilutions

WB 1:500 - 1:2000

Immunogen Information

Gene ID

20530

Swiss Prot

O15432

Immunogen

A synthetic peptide corresponding to a sequence within amino acids 1-100 of mouse Slc31a2 (NP_001277447.1).

Synonyms

CTR2; Slc31a2

Contact

 | 400-999-6126

 | cn.market@abclonal.com.cn

 | www.abclonal.com.cn

Product Information

Source

Rabbit

Isotype

IgG

Purification

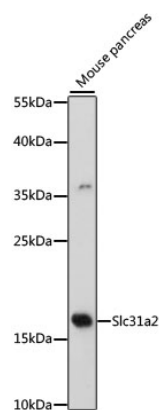
Affinity purification

Storage

Store at -20°C. Avoid freeze / thaw cycles.

Buffer: PBS with 0.01% thimerosal, 50% glycerol, pH7.3.

Validation Data



Western blot analysis of lysates from mouse pancreas, using Slc31a2 Rabbit pAb (A16362) at 1:500 dilution.

Secondary antibody: HRP Goat Anti-Rabbit IgG (H+L) (AS014) at 1:10000 dilution.

Lysates/proteins: 25µg per lane.

Blocking buffer: 3% nonfat dry milk in TBST.

Detection: ECL Basic Kit (RM00020).

Exposure time: 90s.