

OTUD6A Rabbit pAb

Catalog No.: A16628

Basic Information

Observed MW

37kDa

Calculated MW

34kDa

Category

Primary antibody

Applications

ELISA, WB

Cross-Reactivity

Human, Mouse, Rat

Background

Predicted to enable thiol-dependent deubiquitinase. Predicted to be involved in protein deubiquitination. Orthologous to human OTUD6A (OTU deubiquitinase 6A).

Recommended Dilutions

WB 1:500 - 1:2000

Immunogen Information

Gene ID

408193

Swiss Prot

Q6IE21

Immunogen

Recombinant protein of human OTUD6A

Synonyms

Hshin6; EG408193; OTUD6A

Contact

☎ | 400-999-6126

✉ | cn.market@abclonal.com.cn

🌐 | www.abclonal.com.cn

Product Information

Source

Rabbit

Isotype

IgG

Purification

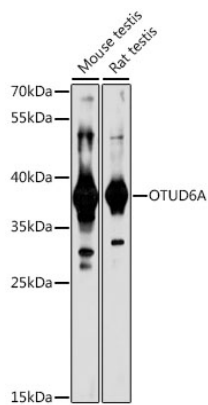
Affinity purification

Storage

Store at -20°C. Avoid freeze / thaw cycles.

Buffer: PBS with 0.01% thimerosal, 50% glycerol, pH7.3.

Validation Data



Western blot analysis of various lysates using OTUD6A Rabbit pAb (A16628) at 1:1000 dilution.
Secondary antibody: HRP Goat Anti-Rabbit IgG (H+L) (AS014) at 1:10000 dilution.
Lysates/proteins: 25µg per lane.
Blocking buffer: 3% nonfat dry milk in TBST.
Detection: ECL Basic Kit (RM00020).
Exposure time: 90s.