

Caspase-3 Rabbit pAb

Catalog No.: A16793 **3 Publications**

Basic Information

Observed MW

17kDa/35kDa

Calculated MW

32kDa

Category

Primary antibody

Applications

ELISA, WB, IHC-P, IF/ICC, IP

Cross-Reactivity

Human, Mouse, Rat

Background

The protein encoded by this gene is a cysteine-aspartic acid protease that plays a central role in the execution-phase of cell apoptosis. The encoded protein cleaves and inactivates poly(ADP-ribose) polymerase while it cleaves and activates sterol regulatory element binding proteins as well as caspases 6, 7, and 9. This protein itself is processed by caspases 8, 9, and 10. It is the predominant caspase involved in the cleavage of amyloid-beta 4A precursor protein, which is associated with neuronal death in Alzheimer's disease.

Recommended Dilutions

WB 1:500 - 1:1000**IHC-P** 1:50 - 1:200**IF/ICC** 1:50 - 1:200**IP** 0.5µg-4µg antibody for
200µg-400µg extracts of
whole cells

Immunogen Information

Gene ID

836

Swiss Prot

P42574

Immunogen

Recombinant fusion protein containing a sequence corresponding to amino acids 29-175 of human Caspase-3 (NP_004337.2).

Synonyms

CPP32; SCA-1; CPP32B; Caspase-3

Contact

 | 400-999-6126 | cn.market@abclonal.com.cn | www.abclonal.com.cn

Product Information

Source

Rabbit

Isotype

IgG

Purification

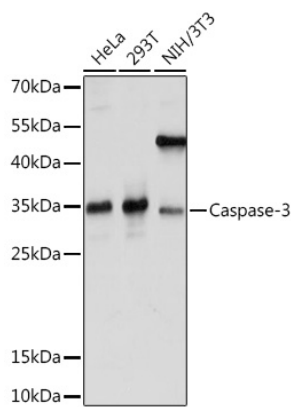
Affinity purification

Storage

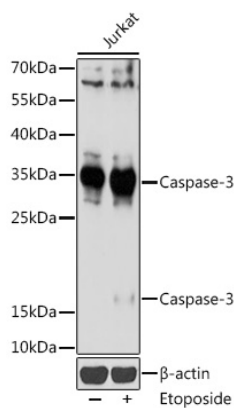
Store at -20°C. Avoid freeze / thaw cycles.

Buffer: PBS with 0.01% thimerosal, 50% glycerol, pH7.3.

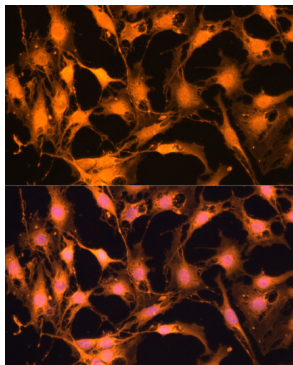
Validation Data



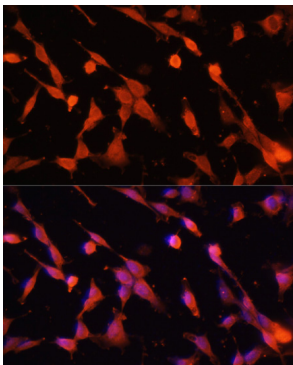
Western blot analysis of various lysates using Caspase-3 Rabbit pAb (A16793) at 1:1000 dilution.
Secondary antibody: HRP Goat Anti-Rabbit IgG (H+L) (AS014) at 1:10000 dilution.
Lysates/proteins: 25µg per lane.
Blocking buffer: 3% nonfat dry milk in TBST.
Detection: ECL Basic Kit (RM00020).
Exposure time: 5s.



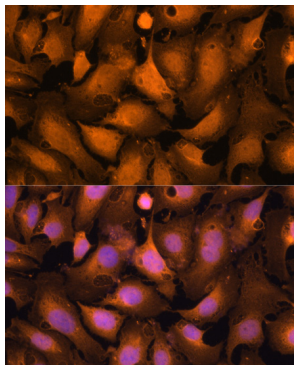
Western blot analysis of lysates from Jurkat cells, using Caspase-3 Rabbit pAb (A16793) at 1:1000 dilution. Jurkat cells were treated by Etoposide (25 uM) at 37°C for 5 hours.
Secondary antibody: HRP Goat Anti-Rabbit IgG (H+L) (AS014) at 1:10000 dilution.
Lysates/proteins: 25µg per lane.
Blocking buffer: 3% nonfat dry milk in TBST.
Detection: ECL Basic Kit (RM00020).
Exposure time: 90s.



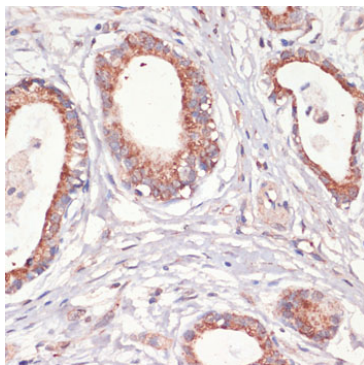
Immunofluorescence analysis of C6 cells using Caspase-3 Rabbit pAb (A16793) at dilution of 1:100. Blue: DAPI for nuclear staining.



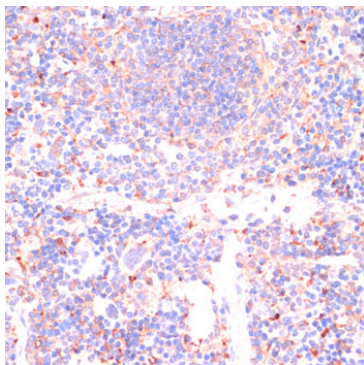
Immunofluorescence analysis of NIH/3T3 cells using Caspase-3 Rabbit pAb (A16793) at dilution of 1:100. Blue: DAPI for nuclear staining.



Immunofluorescence analysis of U-2OS cells using Caspase-3 Rabbit pAb (A16793) at dilution of 1:100. Blue: DAPI for nuclear staining.



Immunohistochemistry analysis of paraffin-embedded human gastric cancer using Caspase-3 Rabbit pAb (A16793) at dilution of 1:200 (40x lens). Perform microwave antigen retrieval with 10 mM PBS buffer pH 7.2 before commencing with IHC staining protocol.



Immunohistochemistry analysis of paraffin-embedded mouse spleen using Caspase-3 Rabbit pAb (A16793) at dilution of 1:200 (40x lens). Perform microwave antigen retrieval with 10 mM PBS buffer pH 7.2 before commencing with IHC staining protocol.