

TOP3A Rabbit pAb

Catalog No.: A16987

Basic Information

Observed MW

112kDa

Calculated MW

112kDa

Category

Primary antibody

Applications

ELISA, WB

Cross-Reactivity

Mouse

Background

This gene encodes a DNA topoisomerase, an enzyme that controls and alters the topologic states of DNA during transcription. This enzyme catalyzes the transient breaking and rejoining of a single strand of DNA which allows the strands to pass through one another, thus reducing the number of supercoils and altering the topology of DNA. This enzyme forms a complex with BLM which functions in the regulation of recombination in somatic cells. Alternative splicing results in multiple transcript variants encoding different isoforms.

Recommended Dilutions

WB 1:500 - 1:2000

Immunogen Information

Gene ID

7156

Swiss Prot

Q13472

Immunogen

A synthetic peptide corresponding to a sequence within amino acids 1-100 of human TOP3A (XP_011522303.1).

Synonyms

TOP3; PEOB5; ZGRF7; MGRISCE2; TOP3A

Contact

☎ | 400-999-6126

✉ | cn.market@abclonal.com.cn

🌐 | www.abclonal.com.cn

Product Information

Source

Rabbit

Isotype

IgG

Purification

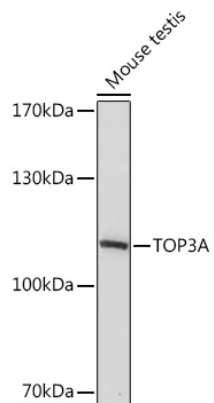
Affinity purification

Storage

Store at -20°C. Avoid freeze / thaw cycles.

Buffer: PBS with 0.01% thimerosal, 50% glycerol, pH7.3.

Validation Data



Western blot analysis of lysates from Mouse testis, using TOP3A Rabbit pAb (A16987) at 1:1000 dilution.
Secondary antibody: HRP Goat Anti-Rabbit IgG (H+L) (AS014) at 1:10000 dilution.
Lysates/proteins: 25µg per lane.
Blocking buffer: 3% nonfat dry milk in TBST.
Detection: ECL Basic Kit (RM00020).
Exposure time: 10s.