

# AJAP1 Rabbit pAb

Catalog No.: A17184

## Basic Information

### Observed MW

45kDa

### Calculated MW

45kDa

### Category

Primary antibody

### Applications

ELISA, WB

### Cross-Reactivity

Human, Mouse, Rat

## Background

Enables beta-catenin binding activity. Involved in negative regulation of cell-matrix adhesion; negative regulation of wound healing; and regulation of polarized epithelial cell differentiation. Located in several cellular components, including adherens junction; basolateral plasma membrane; and cell-cell contact zone. Is spanning component of plasma membrane.

## Recommended Dilutions

WB 1:500 - 1:2000

## Immunogen Information

### Gene ID

55966

### Swiss Prot

Q9UKB5

### Immunogen

A synthetic peptide corresponding to a sequence within amino acids 300-400 of human AJAP1 (NP\_061324.1).

### Synonyms

MOT8; SHREW1; SHREW-1; AJAP1

## Contact

☎ | 400-999-6126

✉ | [cn.market@abclonal.com.cn](mailto:cn.market@abclonal.com.cn)

🌐 | [www.abclonal.com.cn](http://www.abclonal.com.cn)

## Product Information

### Source

Rabbit

### Isotype

IgG

### Purification

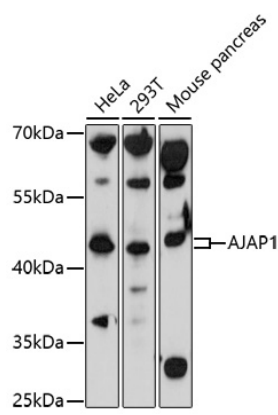
Affinity purification

### Storage

Store at -20°C. Avoid freeze / thaw cycles.

Buffer: PBS with 0.01% thimerosal, 50% glycerol, pH7.3.

# Validation Data



Western blot analysis of various lysates using AJAP1 Rabbit pAb (A17184) at 1:1000 dilution.  
Secondary antibody: HRP Goat Anti-Rabbit IgG (H+L) (AS014) at 1:10000 dilution.  
Lysates/proteins: 25µg per lane.  
Blocking buffer: 3% nonfat dry milk in TBST.  
Detection: ECL Basic Kit (RM00020).  
Exposure time: 30s.