

TET3 Rabbit pAb

Catalog No.: A17310

Basic Information

Observed MW

179kDa

Calculated MW

194kDa

Category

Primary antibody

Applications

ELISA, WB

Cross-Reactivity

Mouse

Background

Enables methyl-CpG binding activity and zinc ion binding activity. Involved in histone H3-K4 trimethylation; positive regulation of transcription by RNA polymerase II; and protein O-linked glycosylation. Predicted to be located in cytoplasm and male pronucleus. Predicted to be active in nucleus. Biomarker of esophagus squamous cell carcinoma.

Recommended Dilutions

WB 1:500 - 1:2000

Immunogen Information

Gene ID

200424

Swiss Prot

O43151

Immunogen

A synthetic peptide corresponding to a sequence within amino acids 1551-1650 of human TET3 (NP_001274420.1).

Synonyms

BEFAHRS; hCG_40738; TET3

Contact

 | 400-999-6126

 | cn.market@abclonal.com.cn

 | www.abclonal.com.cn

Product Information

Source

Rabbit

Isotype

IgG

Purification

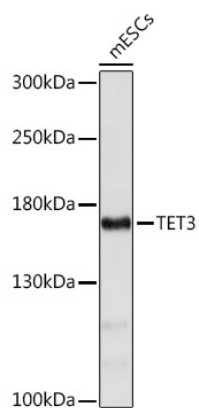
Affinity purification

Storage

Store at -20°C. Avoid freeze / thaw cycles.

Buffer: PBS with 0.01% thimerosal, 50% glycerol, pH7.3.

Validation Data



Western blot analysis of lysates from mESCs cells, using TET3 Rabbit pAb (A17310) at 1:1000 dilution.
Secondary antibody: HRP Goat Anti-Rabbit IgG (H+L) (AS014) at 1:10000 dilution.
Lysates/proteins: 25µg per lane.
Blocking buffer: 3% nonfat dry milk in TBST.
Detection: ECL Basic Kit (RM00020).
Exposure time: 5s.