

LC3B Mouse mAb

Catalog No.: A17424

11 Publications

Basic Information

Observed MW

14-15kDa

Calculated MW

15kDa

Category

Primary antibody

Applications

ELISA, WB

Cross-Reactivity

Human, Mouse, Rat

CloneNo number

AMC0036

Background

The product of this gene is a subunit of neuronal microtubule-associated MAP1A and MAP1B proteins, which are involved in microtubule assembly and important for neurogenesis. Studies on the rat homolog implicate a role for this gene in autophagy, a process that involves the bulk degradation of cytoplasmic component.

Recommended Dilutions

WB 1:500 - 1:2000

Immunogen Information

Gene ID

81631

Swiss Prot

Q9GZQ8

Immunogen

Recombinant fusion protein containing a sequence corresponding to amino acids 1-125 of human LC3B (NP_073729.1).

Synonyms

LC3B; ATG8F; MAP1LC3B-a; MAP1A/1BLC3

Contact

☎ | 400-999-6126

✉ | cn.market@abclonal.com.cn

🌐 | www.abclonal.com.cn

Product Information

Source

Mouse

Isotype

IgG2a, Kappa

Purification

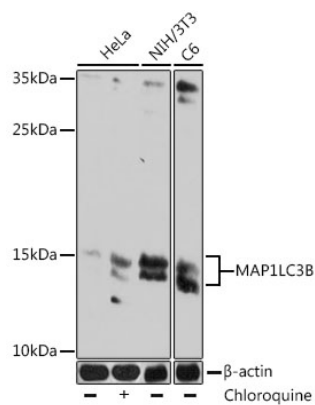
Affinity purification

Storage

Store at -20°C. Avoid freeze / thaw cycles.

Buffer: PBS with 0.01% thimerosal, 50% glycerol, pH7.3.

Validation Data



Western blot analysis of various lysates using LC3B Mouse mAb (A17424) at 1:1000 dilution. HeLa cells were treated by Chloroquine (50 μ M) at 37°C for 20 hours.

Secondary antibody: HRP Goat Anti-Mouse IgG (H+L) (AS003) at 1:10000 dilution.

Lysates/proteins: 25 μ g per lane.

Blocking buffer: 3% nonfat dry milk in TBST.

Detection: ECL Basic Kit (RM00020).

Exposure time: 180s.