

# pan-Symmetric Di-Methyl Arginine Rabbit pAb

Catalog No.: A18261 **2 Publications**

## Basic Information

### Observed MW

22-70kDa

### Calculated MW

### Category

Primary antibody

### Applications

ELISA, WB

### Cross-Reactivity

Human, Mouse, Rat, Other (Wide Range Predicted)

## Background

The methylation of arginine residues in proteins is a post-translational modification that contributes to a wide range of biological processes. Many cytokines involved in T cell development and activation utilize the common cytokine receptor  $\gamma$ -chain ( $\gamma c$ ) and the kinase JAK3 for signal transduction.

## Recommended Dilutions

WB 1:100 - 1:500

## Immunogen Information

### Gene ID

### Swiss Prot

### Immunogen

A synthetic peptide corresponding to a sequence containing succinylated R.

### Synonyms

## Contact

 | 400-999-6126

 | [cn.market@abclonal.com.cn](mailto:cn.market@abclonal.com.cn)

 | [www.abclonal.com.cn](http://www.abclonal.com.cn)

## Product Information

### Source

Rabbit

### Isotype

IgG

### Purification

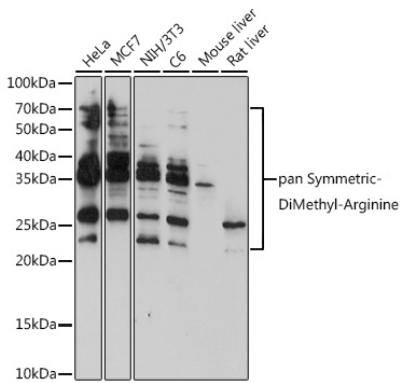
Affinity purification

### Storage

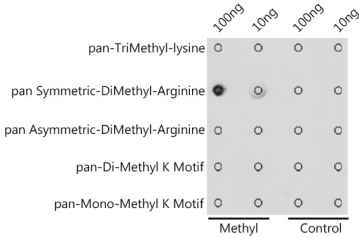
Store at -20°C. Avoid freeze / thaw cycles.

Buffer: PBS with 0.01% thimerosal, 50% glycerol, pH7.3.

Validation Data



Western blot analysis of various lysates using pan-Symmetric-Di-Methyl Arginine Rabbit pAb (A18261) at 1:500 dilution.  
Secondary antibody: HRP Goat Anti-Rabbit IgG (H+L) (AS014) at 1:10000 dilution.  
Lysates/proteins: 25µg per lane.  
Blocking buffer: 3% nonfat dry milk in TBST.  
Detection: ECL Basic Kit (RM00020).  
Exposure time: 180s.



Dot-blot analysis of all sorts of methylation peptides using pan Symmetric-DiMethyl-Arginine antibody (A18261) at 1:1000 dilution.