

# ZFP36 Rabbit pAb

Catalog No.: A1878

1 Publications

## Basic Information

### Observed MW

40-48kDa

### Calculated MW

34kDa

### Category

Primary antibody

### Applications

ELISA, WB

### Cross-Reactivity

Human, Mouse

## Background

Enables several functions, including 14-3-3 protein binding activity; heat shock protein binding activity; and mRNA 3'-UTR AU-rich region binding activity. Involved in several processes, including cellular response to cytokine stimulus; cellular response to growth factor stimulus; and regulation of gene expression. Acts upstream of or within mRNA catabolic process. Located in cytoplasmic ribonucleoprotein granule; cytosol; and nucleus. Part of ribonucleoprotein complex. Colocalizes with RISC-loading complex.

## Recommended Dilutions

WB 1:500 - 1:1000

## Immunogen Information

### Gene ID

7538

### Swiss Prot

P26651

### Immunogen

Recombinant fusion protein containing a sequence corresponding to amino acids 230-326 of human ZFP36 (NP\_003398.3).

### Synonyms

TTP; G0S24; GOS24; TIS11; NUP475; zfp-36; RNF162A; ZFP36

## Contact

☎ | 400-999-6126

✉ | [cn.market@abclonal.com.cn](mailto:cn.market@abclonal.com.cn)

🌐 | [www.abclonal.com.cn](http://www.abclonal.com.cn)

## Product Information

### Source

Rabbit

### Isotype

IgG

### Purification

Affinity purification

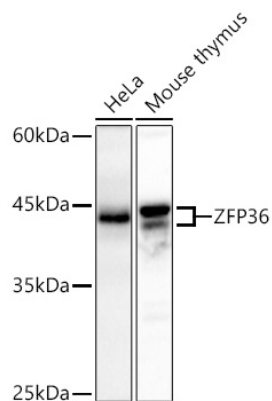
### Storage

Store at -20°C. Avoid freeze / thaw cycles.

Buffer: PBS with 0.05% proclin300, 50% glycerol, pH7.3.

## Validation Data

---



Western blot analysis of various lysates using ZFP36 Rabbit pAb (A1878) at 1:500 dilution incubated overnight at 4°C.

Secondary antibody: HRP-conjugated Goat anti-Rabbit IgG (H+L)(AS014) at 1:10000 dilution.

Lysates/proteins: 25 µg per lane.

Blocking buffer: 3% nonfat dry milk in TBST.

Detection: ECL Basic Kit (RM00020)

Exposure time: 180 s.