

Integrin beta 3 (ITGB3/CD61) Rabbit mAb

Catalog No.: A19073

Recombinant

5 Publications

Basic Information

Observed MW

110kDa

Calculated MW

87kDa

Category

Primary antibody

Applications

ELISA, WB, IHC-P, IP, FC (intra)

Cross-Reactivity

Human, Mouse, Rat

CloneNo number

ARC0460

Background

The ITGB3 protein product is the integrin beta chain beta 3. Integrins are integral cell-surface proteins composed of an alpha chain and a beta chain. A given chain may combine with multiple partners resulting in different integrins. Integrin beta 3 is found along with the alpha IIb chain in platelets. Integrins are known to participate in cell adhesion as well as cell-surface mediated signalling.

Recommended Dilutions

| | |
|------------|--|
| WB | 1:500 - 1:2000 |
| IHC-P | 1:50 - 1:200 |
| IP | 0.5µg-4µg antibody for 200µg-400µg extracts of whole cells |
| FC (intra) | 1:50 - 1:200 |

Immunogen Information

Gene ID

3690

Swiss Prot

P05106

Immunogen

A synthetic peptide corresponding to a sequence within amino acids 689-788 of human Integrin beta 3 (ITGB3/CD61) (P05106).

Synonyms

GT; GT2; CD61; GP3A; BDPLT2; GPIIIa; BDPLT16; BDPLT24; Integrin beta 3 (ITGB3/CD61)

Contact

| | |
|---|---------------------------|
| ☎ | 400-999-6126 |
| ✉ | cn.market@abclonal.com.cn |
| 🌐 | www.abclonal.com.cn |

Product Information

Source

Rabbit

Isotype

IgG

Purification

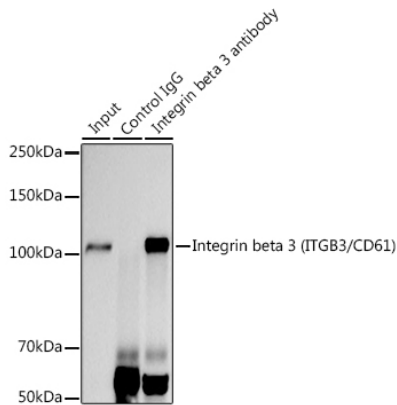
Affinity purification

Storage

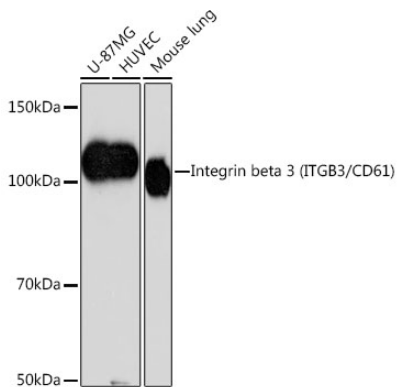
Store at -20°C. Avoid freeze / thaw cycles.

Buffer: PBS with 0.02% sodium azide, 0.05% BSA, 50% glycerol, pH7.3.

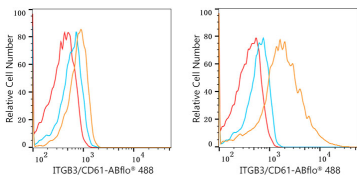
Validation Data



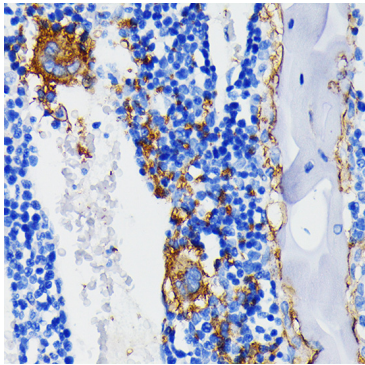
Immunoprecipitation analysis of 300 µg extracts of U-87MG cells using 3 µg Integrin beta 3 (ITGB3/CD61) antibody (A19073). Western blot was performed from the immunoprecipitate using Integrin beta 3 (ITGB3/CD61) antibody (A19073) at a dilution of 1:1000.



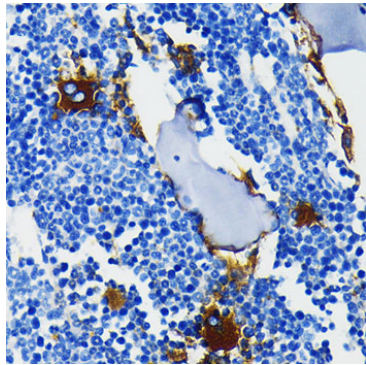
Western blot analysis of various lysates using Integrin beta 3 (ITGB3/CD61) Rabbit mAb (A19073) at 1:1000 dilution.
Secondary antibody: HRP Goat Anti-Rabbit IgG (H+L) (AS014) at 1:10000 dilution.
Lysates/proteins: 25µg per lane.
Blocking buffer: 3% nonfat dry milk in TBST.
Detection: ECL Basic Kit (RM00020).
Exposure time: 90s.



Flow cytometry:1X10⁶ U-937 cells (negative control,left) and HEL cells (right) were intracellularly-stained with Integrin beta 3 (ITGB3/CD61) Rabbit mAb(A19073, 2.5 µg/mL,orange line) or Rabbit IgG isotype control (AC042, 2.5 µg/mL,blue line),followed by FITC conjugated goat anti-rabbit pAb(1:200 dilution) staining. Non-fluorescently stained cells were used as blank control (red line).



Immunohistochemistry analysis of Integrin beta 3 (ITGB3/CD61) in paraffin-embedded rat bone marrow using Integrin beta 3 (ITGB3/CD61) Rabbit mAb (A19073) at dilution of 1:100 (40x lens).Perform microwave antigen retrieval with 10 mM PBS buffer pH 7.2 before commencing with IHC staining protocol.



Immunohistochemistry analysis of Integrin beta 3 (ITGB3/CD61) in paraffin-embedded mouse bone marrow using Integrin beta 3 (ITGB3/CD61) Rabbit mAb (A19073) at dilution of 1:100 (40x lens).Perform microwave antigen retrieval with 10 mM PBS buffer pH 7.2 before commencing with IHC staining protocol.