

# [KO Validated] Src Rabbit mAb

Catalog No.: A19119

**KO Validated**

**Recombinant**

**8 Publications**

## Basic Information

### Observed MW

60kDa

### Calculated MW

60kDa

### Category

Primary antibody

### Applications

ELISA, WB, IF/ICC, IP

### Cross-Reactivity

Human, Mouse, Rat

### CloneNo number

ARC0378

## Background

This gene is highly similar to the v-src gene of Rous sarcoma virus. This proto-oncogene may play a role in the regulation of embryonic development and cell growth. The protein encoded by this gene is a tyrosine-protein kinase whose activity can be inhibited by phosphorylation by c-SRC kinase. Mutations in this gene could be involved in the malignant progression of colon cancer. Two transcript variants encoding the same protein have been found for this gene.

## Recommended Dilutions

**WB** 1:500 - 1:2000

**IF/ICC** 1:50 - 1:200

**IP** 0.5µg-4µg antibody for  
400µg-600µg extracts of  
whole cells

## Immunogen Information

### Gene ID

6714

### Swiss Prot

P12931

### Immunogen

A synthetic peptide corresponding to a sequence within amino acids 1-100 of human Src (P12931).

### Synonyms

ASV; SRC1; THC6; c-SRC; p60-Src; rc

## Contact

☎ | 400-999-6126

✉ | [cn.market@abclonal.com.cn](mailto:cn.market@abclonal.com.cn)

🌐 | [www.abclonal.com.cn](http://www.abclonal.com.cn)

## Product Information

### Source

Rabbit

### Isotype

IgG

### Purification

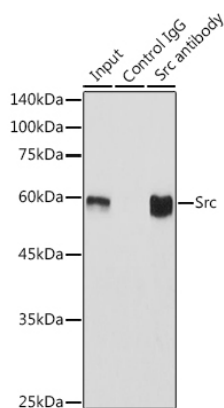
Affinity purification

### Storage

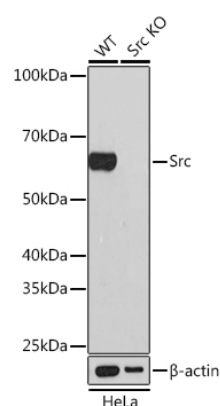
Store at -20°C. Avoid freeze / thaw cycles.

Buffer: PBS with 0.02% sodium azide, 0.05% BSA, 50% glycerol, pH7.3.

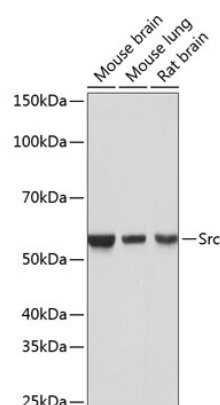
## Validation Data



Immunoprecipitation analysis of 600 µg extracts of Mouse brain using 3 µg Src antibody (A19119). Western blot was performed from the immunoprecipitate using Src antibody (A19119) at a dilution of 1:1000.

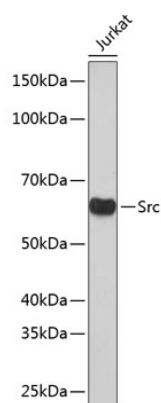


Western blot analysis of lysates from wild type (WT) and Src knockout (KO) HeLa cells, using [KO Validated] Src Rabbit mAb (A19119) at 1:1000 dilution. Secondary antibody: HRP Goat Anti-Rabbit IgG (H+L) (AS014) at 1:10000 dilution. Lysates/proteins: 25µg per lane. Blocking buffer: 3% nonfat dry milk in TBST. Detection: ECL Basic Kit (RM00020). Exposure time: 1min.



Western blot analysis of various lysates using [KO Validated] Src Rabbit mAb (A19119) at 1:1000 dilution. Secondary antibody: HRP Goat Anti-Rabbit IgG (H+L) (AS014) at 1:10000 dilution. Lysates/proteins: 25µg per lane. Blocking buffer: 3% nonfat dry milk in TBST. Detection: ECL Basic Kit (RM00020). Exposure time: 1s.

## Validation Data



Western blot analysis of lysates from Jurkat cells, using [KO Validated] Src Rabbit mAb (A19119) at 1:1000 dilution.

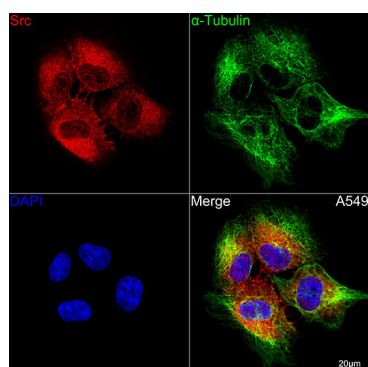
Secondary antibody: HRP Goat Anti-Rabbit IgG (H+L) (AS014) at 1:10000 dilution.

Lysates/proteins: 25µg per lane.

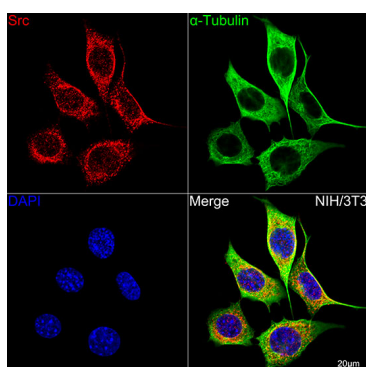
Blocking buffer: 3% nonfat dry milk in TBST.

Detection: ECL Basic Kit (RM00020).

Exposure time: 1min.



Confocal imaging of A549 cells using [KO Validated] Src Rabbit mAb (A19119, at dilution of 1:100) (Red). The cells were counterstained with α-Tubulin Mouse mAb (AC012, dilution 1:400) (Green). DAPI was used for nuclear staining (blue). Objective: 100x.



Confocal imaging of NIH/3T3 cells using [KO Validated] Src Rabbit mAb (A19119, at dilution of 1:100) (Red). The cells were counterstained with α-Tubulin Mouse mAb (AC012, dilution 1:400) (Green). DAPI was used for nuclear staining (blue). Objective: 100x.