

# TDP-43/TARDBP Rabbit mAb

Catalog No.: A19123

Recombinant

1 Publications

## Basic Information

### Observed MW

35kDa/45kDa/45kDa

### Calculated MW

45kDa

### Category

Primary antibody

### Applications

ELISA, WB, IHC-P, IF/ICC, IP, ChIP

### Cross-Reactivity

Human, Mouse, Rat

### CloneNo number

ARC0492

## Background

HIV-1, the causative agent of acquired immunodeficiency syndrome (AIDS), contains an RNA genome that produces a chromosomally integrated DNA during the replicative cycle. Activation of HIV-1 gene expression by the transactivator Tat is dependent on an RNA regulatory element (TAR) located downstream of the transcription initiation site. The protein encoded by this gene is a transcriptional repressor that binds to chromosomally integrated TAR DNA and represses HIV-1 transcription. In addition, this protein regulates alternate splicing of the CFTR gene. A similar pseudogene is present on chromosome 20.

## Recommended Dilutions

**WB** 1:500 - 1:2000**IHC-P** 1:50 - 1:200**IF/ICC** 1:50 - 1:200**IP** 0.5µg-4µg antibody for  
400µg-600µg extracts of  
whole cells**ChIP** 5µg antibody for  
10µg-15µg of Chromatin

## Immunogen Information

### Gene ID

23435

### Swiss Prot

Q13148

### Immunogen

A synthetic peptide corresponding to a sequence within amino acids 300-400 of human TDP-43/TARDB (Q13148).

### Synonyms

ALS10; TDP-43; TDP-43/TARDBP

## Contact

 | 400-999-6126 | [cn.market@abclonal.com.cn](mailto:cn.market@abclonal.com.cn) | [www.abclonal.com.cn](http://www.abclonal.com.cn)

## Product Information

### Source

Rabbit

### Isotype

IgG

### Purification

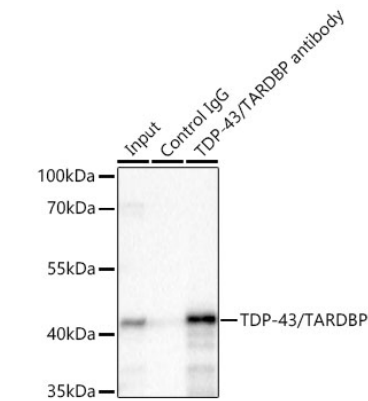
Affinity purification

### Storage

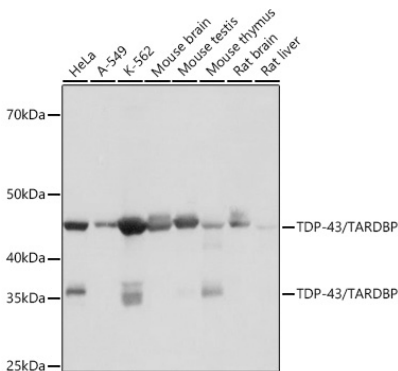
Store at -20°C. Avoid freeze / thaw cycles.

Buffer: PBS with 0.02% sodium azide, 0.05% BSA, 50% glycerol, pH7.3.

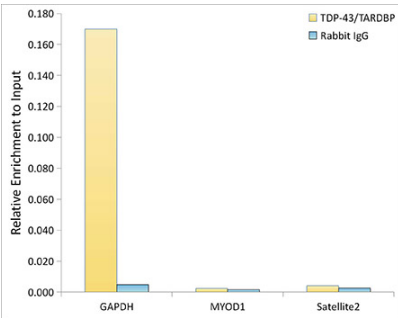
Validation Data



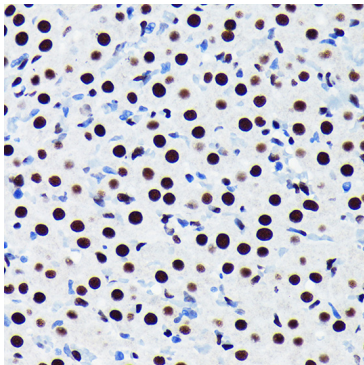
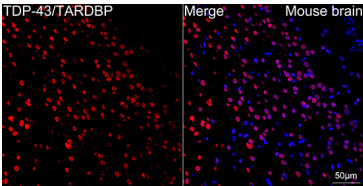
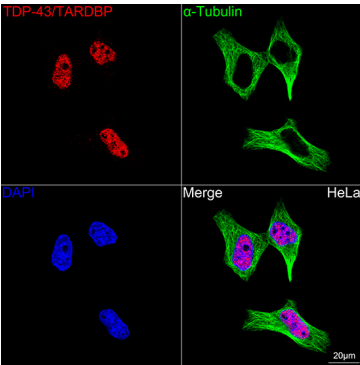
Immunoprecipitation of TDP-43/TARDBP from 500 µg extracts of K-562 cells was performed using 2 µg of TDP-43/TARDBP Rabbit mAb (A19123). Rabbit IgG isotype control (AC042) was used to precipitate the Control IgG sample. IP samples were eluted with 1X non-reducing Laemmli Buffer. The Input lane represents 10% of the total input. Western blot analysis of immunoprecipitates was conducted using TDP-43/TARDBP Rabbit mAb (A19123) at a dilution of 1:500.



Western blot analysis of various lysates using TDP-43/TARDBP Rabbit mAb (A19123) at 1:1000 dilution. Secondary antibody: HRP Goat Anti-Rabbit IgG (H+L) (AS014) at 1:10000 dilution. Lysates/proteins: 25µg per lane. Blocking buffer: 3% nonfat dry milk in TBST. Detection: ECL Basic Kit (RM00020). Exposure time: 10s.

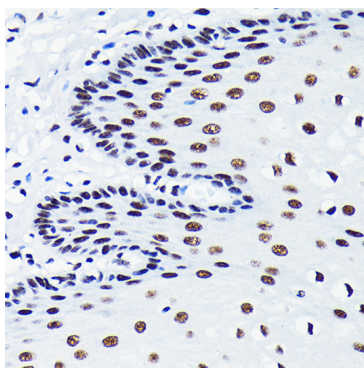


Chromatin immunoprecipitation analysis of extracts of K562 cells, using TDP-43/TARDBP Rabbit mAb (A19123) and rabbit IgG. The amount of immunoprecipitated DNA was checked by quantitative PCR. Histogram was constructed by the ratios of the immunoprecipitated DNA to the input.

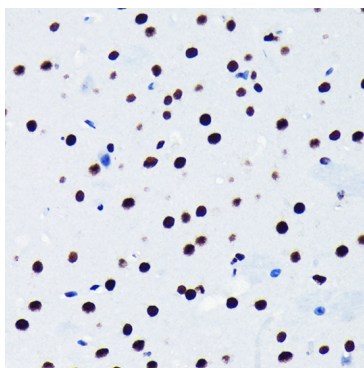


## Validation Data

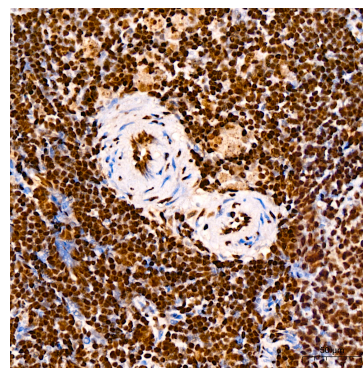
Confocal imaging of HeLa cells using TDP-43/TARDBP Rabbit mAb (A19123, dilution 1:200) followed by a further incubation with Cy3 Goat Anti-Rabbit IgG (H+L) (AS007, dilution 1:500) (Red). The cells were counterstained with  $\alpha$ -Tubulin Mouse mAb (AC012, dilution 1:400) followed by incubation with ABflo® 488-conjugated Goat Anti-Mouse IgG (H+L) Ab (AS076, dilution 1:500) (Green). DAPI was used for nuclear staining (Blue). Objective: 100x.



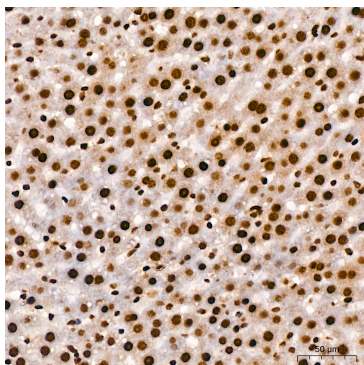
Confocal imaging of paraffin-embedded Mouse brain tissue using TDP-43/TARDBP Rabbit mAb (A19123, dilution 1:200) followed by a further incubation with Cy3 Goat Anti-Rabbit IgG (H+L) (AS007, dilution 1:500) (Red). DAPI was used for nuclear staining (Blue). Objective: 40x. Perform microwave antigen retrieval with 0.01 M citrate buffer (pH 6.0) prior to IF staining.



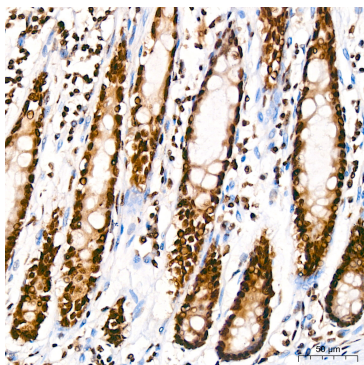
Immunohistochemistry analysis of paraffin-embedded rat ovary using TDP-43/TARDBP Rabbit mAb (A19123) at dilution of 1:100 (40x lens). Perform microwave antigen retrieval with 10 mM PBS buffer pH 7.2 before commencing with IHC staining protocol.



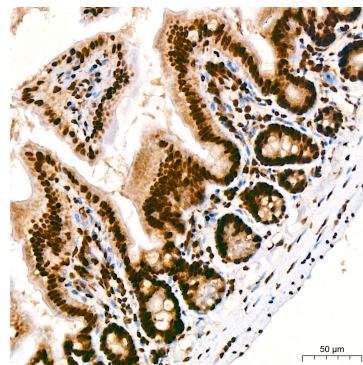
Immunohistochemistry analysis of paraffin-embedded human esophageal using TDP-43/TARDBP Rabbit mAb (A19123) at dilution of 1:100 (40x lens). Perform microwave antigen retrieval with 10 mM PBS buffer pH 7.2 before commencing with IHC staining protocol.



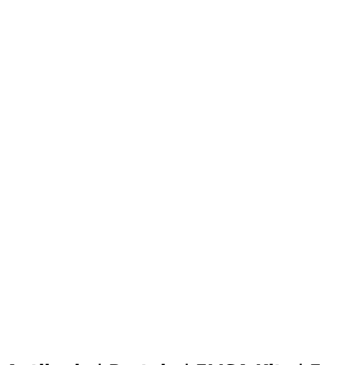
Immunohistochemistry analysis of paraffin-embedded mouse brain using TDP-43/TARDBP Rabbit mAb (A19123) at dilution of 1:100 (40x lens). Perform microwave antigen retrieval with 10 mM PBS buffer pH 7.2 before commencing with IHC staining protocol.



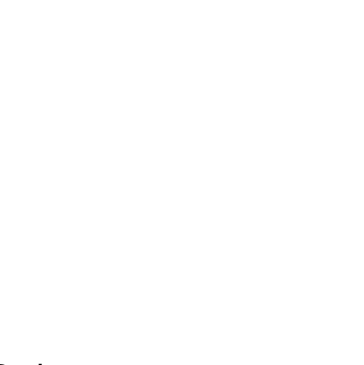
Immunohistochemistry analysis of paraffin-embedded rat spleen using TDP-43/TARDBP Rabbit mAb (A19123) at dilution of 1:200 (40x lens). Perform high pressure antigen retrieval with 10 mM citrate buffer pH 6.0 before commencing with IHC staining protocol.



Immunohistochemistry analysis of paraffin-embedded rat liver using TDP-43/TARDBP Rabbit mAb (A19123) at dilution of 1:200 (40x lens). Perform high pressure antigen retrieval with 10 mM citrate buffer pH 6.0 before commencing with IHC staining protocol.



Immunohistochemistry analysis of paraffin-embedded human colon using TDP-43/TARDBP Rabbit mAb (A19123) at dilution of 1:200 (40x lens). Perform high pressure antigen retrieval with 10 mM citrate buffer pH 6.0 before commencing with IHC staining protocol.

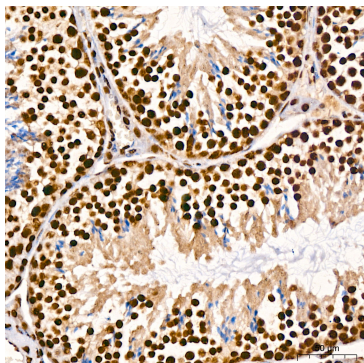


Immunohistochemistry analysis of paraffin-embedded mouse colon using TDP-43/TARDBP Rabbit mAb (A19123) at dilution of 1:200 (40x lens). Perform high pressure antigen retrieval with 10 mM citrate buffer pH 6.0 before commencing with IHC staining protocol.



## Validation Data

---



Immunohistochemistry analysis of paraffin-embedded mouse testis using TDP-43/TARDBP Rabbit mAb (A19123) at dilution of 1:200 (40x lens). Perform high pressure antigen retrieval with 10 mM citrate buffer pH 6.0 before commencing with IHC staining protocol.