

Cleaved PARP1 p25 Rabbit mAb

Catalog No.: A19612 **Recombinant** **14 Publications**

Basic Information

Observed MW

27kDa

Calculated MW

113kDa

Category

Primary antibody

Applications

ELISA, WB, IP

Cross-Reactivity

Human, Mouse

CloneNo number

ARC0091

Background

This gene encodes a chromatin-associated enzyme, poly(ADP-ribosyl)transferase, which modifies various nuclear proteins by poly(ADP-ribosyl)ation. The modification is dependent on DNA and is involved in the regulation of various important cellular processes such as differentiation, proliferation, and tumor transformation and also in the regulation of the molecular events involved in the recovery of cell from DNA damage. In addition, this enzyme may be the site of mutation in Fanconi anemia, and may participate in the pathophysiology of type I diabetes.

Recommended Dilutions

WB 1:500 - 1:2000

IP 0.5µg-4µg antibody for
200µg-400µg extracts of
whole cells

Immunogen Information

Gene ID

142

Swiss Prot

P09874

Immunogen

A synthetic peptide corresponding to a sequence within amino acids 150-214 of human Cleaved PARP1 p25 (P09874).

Synonyms

PARP; PARS; PPOL; ADPRT; ARTD1; ADPRT1; PARP-1; ADPRT 1; pADPRT-1; Poly-PARP; Cleaved PARP1 p25

Contact

☎ | 400-999-6126

✉ | cn.market@abclonal.com.cn

🌐 | www.abclonal.com.cn

Product Information

Source

Rabbit

Isotype

IgG

Purification

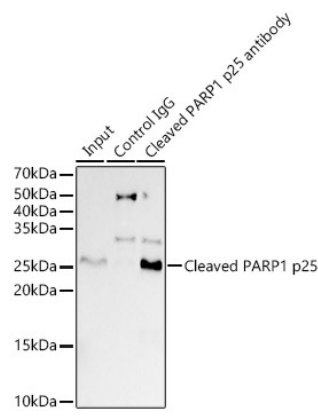
Affinity purification

Storage

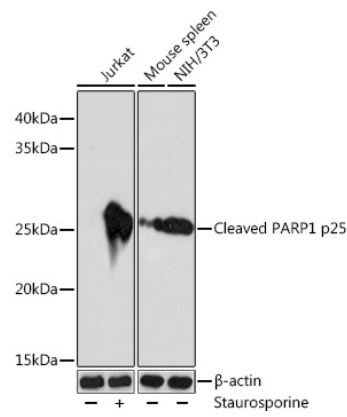
Store at -20°C. Avoid freeze / thaw cycles.

Buffer: PBS with 0.02% sodium azide, 0.05% BSA, 50% glycerol, pH7.3.

Validation Data



Immunoprecipitation analysis of 600 µg extracts of Jurkat cells using 3 µg Cleaved PARP1 p25 antibody (A19612). Western blot was performed from the immunoprecipitate using Cleaved PARP1 p25 antibody (A19612) at a dilution of 1:500.



Western blot analysis of various lysates using Cleaved PARP1 p25 Rabbit mAb (A19612) at 1:1000 dilution. Jurkat cells were treated by Staurosporine (1µM) at room temperature for 3 hours. Secondary antibody: HRP Goat Anti-Rabbit IgG (H+L) (AS014) at 1:10000 dilution. Lysates/proteins: 25µg per lane. Blocking buffer: 3% nonfat dry milk in TBST. Detection: ECL Basic Kit (RM00020). Exposure time: 90s.