

CRM1/XPO1 Rabbit mAb

Catalog No.: A19625

Recombinant

2 Publications

Basic Information

Observed MW

110kDa

Calculated MW

123kDa

Category

Primary antibody

Applications

ELISA, WB, IF/ICC

Cross-Reactivity

Human, Mouse, Rat

CloneNo number

ARC0104

Background

This cell-cycle-regulated gene encodes a protein that mediates leucine-rich nuclear export signal (NES)-dependent protein transport. The protein specifically inhibits the nuclear export of Rev and U snRNAs. It is involved in the control of several cellular processes by controlling the localization of cyclin B, MPAK, and MAPKAP kinase 2. This protein also regulates NFAT and AP-1.

Recommended Dilutions

WB 1:500 - 1:2000

IF/ICC 1:50 - 1:200

Immunogen Information

Gene ID

7514

Swiss Prot

O14980

Immunogen

A synthetic peptide corresponding to a sequence within amino acids 972-1071 of human CRM1/XPO1 (O14980).

Synonyms

emb; CRM1; exp1; CRM-1; Exportin 1; CRM1/XPO1

Contact

☎ | 400-999-6126

✉ | cn.market@abclonal.com.cn

🌐 | www.abclonal.com.cn

Product Information

Source

Rabbit

Isotype

IgG

Purification

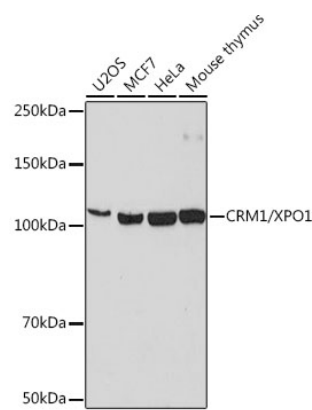
Affinity purification

Storage

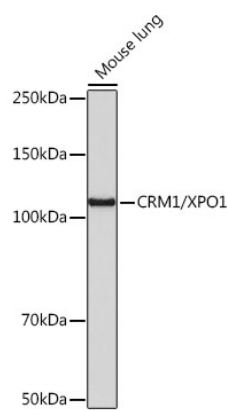
Store at -20°C. Avoid freeze / thaw cycles.

Buffer: PBS with 0.02% sodium azide, 0.05% BSA, 50% glycerol, pH7.3.

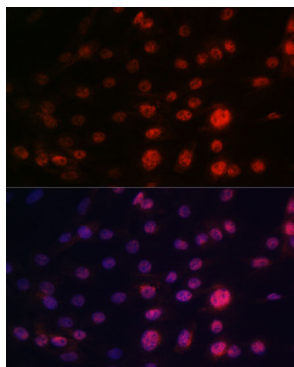
Validation Data



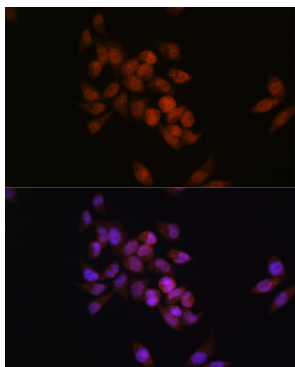
Western blot analysis of extracts of various cell lines, using CRM1/XPO1 antibody (A19625) at 1:1000 dilution.
Secondary antibody: HRP Goat Anti-Rabbit IgG (H+L) (AS014) at 1:10000 dilution.
Lysates/proteins: 25µg per lane.
Blocking buffer: 3% nonfat dry milk in TBST.
Detection: ECL Basic Kit (RM00020).
Exposure time: 90s.



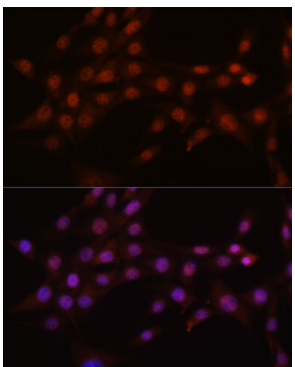
Western blot analysis of extracts of mouse lung, using CRM1/XPO1 antibody (A19625) at 1:1000 dilution.
Secondary antibody: HRP Goat Anti-Rabbit IgG (H+L) (AS014) at 1:10000 dilution.
Lysates/proteins: 25µg per lane.
Blocking buffer: 3% nonfat dry milk in TBST.
Detection: ECL Basic Kit (RM00020).
Exposure time: 3min.



Immunofluorescence analysis of C6 cells using CRM1/XPO1 antibody (A19625). Blue: DAPI for nuclear staining.



Immunofluorescence analysis of HeLa cells using CRM1/XPO1 antibody (A19625). Blue: DAPI for nuclear staining.



Immunofluorescence analysis of NIH-3T3 cells using CRM1/XPO1 antibody (A19625). Blue: DAPI for nuclear staining.