

[KO Validated] TTC11/FIS1 Rabbit mAb

Catalog No.: A19666

KO Validated

Recombinant

12 Publications

Basic Information

Observed MW

15kDa

Calculated MW

17kDa

Category

Primary antibody

Applications

ELISA, WB, IHC-P, IF/ICC, IP

Cross-Reactivity

Human, Mouse, Rat

CloneNo number

ARC5010-03

Background

Enables identical protein binding activity. Involved in several processes, including calcium-mediated signaling using intracellular calcium source; cellular calcium ion homeostasis; and mitochondrion organization. Acts upstream of or within mitochondrion morphogenesis. Located in mitochondrion and peroxisome. Is integral component of mitochondrial outer membrane and integral component of peroxisomal membrane. Part of protein-containing complex. Biomarker of Alzheimer's disease.

Recommended Dilutions

WB	1:500 - 1:1000
IHC-P	1:50 - 1:200
IF/ICC	1:50 - 1:200
IP	0.5µg-4µg antibody for 200µg-400µg extracts of whole cells

Immunogen Information

Gene ID

51024

Swiss Prot

Q9Y3D6

Immunogen

Recombinant fusion protein containing a sequence corresponding to amino acids 1-122 of human TTC11/FIS1 (NP_057152.2).

Synonyms

TTC11; CGI-135; S1

Contact

☎	400-999-6126
✉	cn.market@abclonal.com.cn
🌐	www.abclonal.com.cn

Product Information

Source

Rabbit

Isotype

IgG

Purification

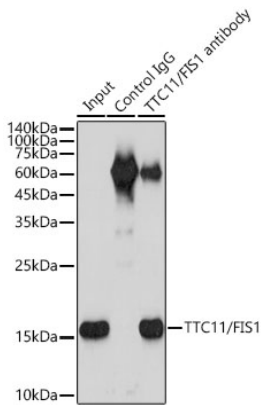
Affinity purification

Storage

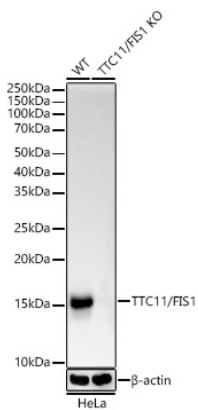
Store at -20°C. Avoid freeze / thaw cycles.

Buffer: PBS with 0.01% thimerosal, 0.05% BSA, 50% glycerol, pH7.3.

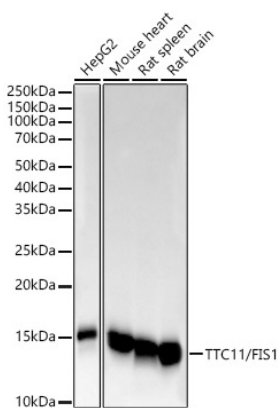
Validation Data



Immunoprecipitation analysis of 300 µg extracts of HeLa cells using 3 µg TTC11/FIS1 antibody (A19666). Western blot was performed from the immunoprecipitate using TTC11/FIS1 (A19666) at a dilution of 1:2000.

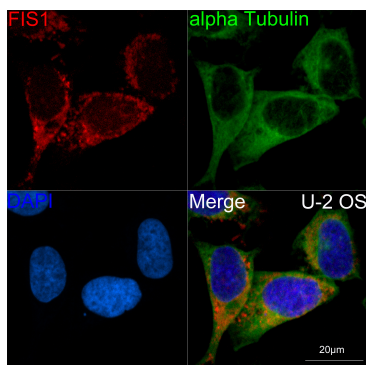


Western blot analysis of lysates from wild type (WT) and TTC11/FIS1 knockout (KO) HeLa(KO) cells, using [KO Validated] TTC11/FIS1 Rabbit mAb (A19666) at 1:1000 dilution. Secondary antibody: HRP Goat Anti-Rabbit IgG (H+L) (AS014) at 1:10000 dilution. Lysates/proteins: 25µg per lane. Blocking buffer: 3% nonfat dry milk in TBST. Detection: ECL Basic Kit (RM00020). Exposure time: 10s.

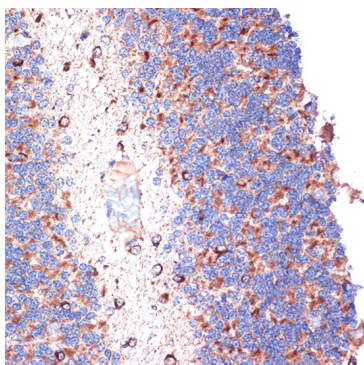


Western blot analysis of various lysates, using [KO Validated] TTC11/FIS1 Rabbit mAb (A19666) at 1:1000 dilution. Secondary antibody: HRP Goat Anti-Rabbit IgG (H+L) (AS014) at 1:10000 dilution. Lysates/proteins: 25µg per lane. Blocking buffer: 3% nonfat dry milk in TBST. Detection: ECL Basic Kit (RM00020). Exposure time: 10s.

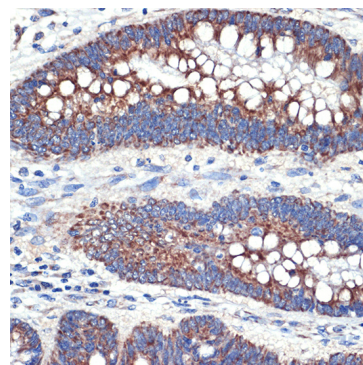
Validation Data



Confocal imaging of U-2 OS cells using [KO Validated] TTC11/FIS1 Rabbit mAb (A19666,dilution 1:100)(Red). The cells were counterstained with α -Tubulin Mouse mAb (AC012,dilution 1:400) (Green). DAPI was used for nuclear staining (blue). Objective: 60x.



Immunohistochemistry analysis of TTC11/FIS1 in paraffin-embedded rat brain using [KO Validated] TTC11/FIS1 Rabbit mAb (A19666) at dilution of 1:100 (40x lens).Perform microwave antigen retrieval with 10 mM Tris/EDTA buffer pH 9.0 before commencing with IHC staining protocol.



Immunohistochemistry analysis of TTC11/FIS1 in paraffin-embedded human colon carcinoma using [KO Validated] TTC11/FIS1 Rabbit mAb (A19666) at dilution of 1:100 (40x lens).Perform microwave antigen retrieval with 10 mM Tris/EDTA buffer pH 9.0 before commencing with IHC staining protocol.