

# AIF1/IBA1 Rabbit mAb

Catalog No.: A19776

Recombinant

29 Publications

## Basic Information

**Observed MW**

17kDa

**Calculated MW**

17kDa

**Category**

Primary antibody

**Applications**

ELISA, WB, IHC-P, IF/ICC

**Cross-Reactivity**

Human, Mouse, Rat

**CloneNo number**

ARC2301

## Background

Enables actin filament binding activity and calcium ion binding activity. Involved in several processes, including Rac protein signal transduction; actin filament organization; and ruffle assembly. Acts upstream of or within actin filament bundle assembly. Located in several cellular components, including actin filament; phagocytic cup; and ruffle membrane. Is expressed in adrenal cortex; central nervous system; embryo mesenchyme; and retina. Human ortholog(s) of this gene implicated in type 1 diabetes mellitus. Orthologous to human AIF1 (allograft inflammatory factor 1).

## Recommended Dilutions

<b>WB</b>	1:500 - 1:2000
<b>IHC-P</b>	1:50 - 1:200
<b>IF/ICC</b>	1:50 - 1:200

## Immunogen Information

**Gene ID**

11629

**Swiss Prot**

O70200(mouse), P55008(Human)

**Immunogen**

A synthetic peptide corresponding to a sequence within amino acids 1-100 of mouse AIF1/IBA1 (O70200).

**Synonyms**

G1; Iba1; AIF-1; D17H6S50E; AIF1/IBA1

## Contact

	400-999-6126
	<a href="mailto:cn.market@abclonal.com.cn">cn.market@abclonal.com.cn</a>
	<a href="http://www.abclonal.com.cn">www.abclonal.com.cn</a>

## Product Information

**Source**

Rabbit

**Isotype**

IgG

**Purification**

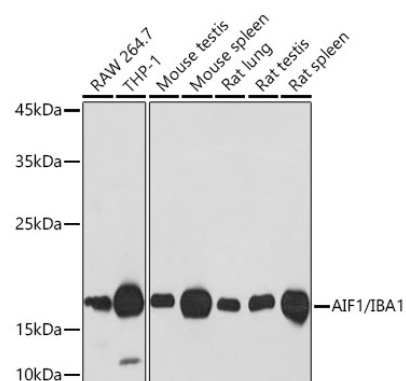
Affinity purification

**Storage**

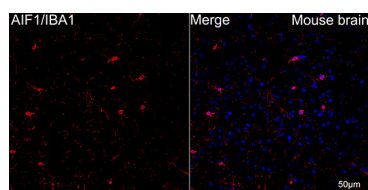
Store at -20°C. Avoid freeze / thaw cycles.

Buffer: PBS with 0.02% sodium azide, 0.05% BSA, 50% glycerol, pH 7.3.

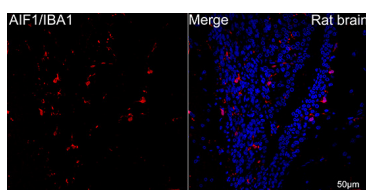
## Validation Data



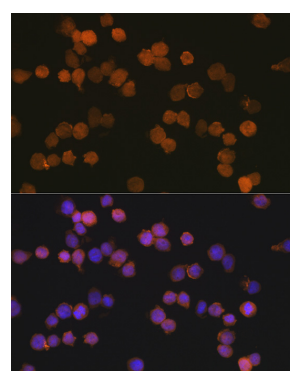
Western blot analysis of various lysates using AIF1/IBA1 Rabbit mAb (A19776) at 1:1000 dilution. Secondary antibody: HRP Goat Anti-Rabbit IgG (H+L) (AS014) at 1:10000 dilution. Lysates/proteins: 25µg per lane. Blocking buffer: 3% nonfat dry milk in TBST. Detection: ECL Basic Kit (RM00020). Exposure time: 30s.



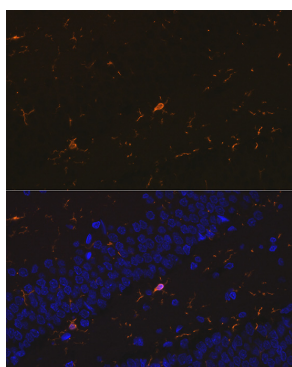
Confocal imaging of paraffin-embedded Mouse brain using AIF1/IBA1 Rabbit mAb (A19776, dilution 1:200) followed by a further incubation with Cy3 Goat Anti-Rabbit IgG (H+L) (AS007, dilution 1:500) (Red). DAPI was used for nuclear staining (Blue). Objective: 40x. Perform microwave antigen retrieval with 0.01M citrate buffer (pH 6.0) prior to IF staining.



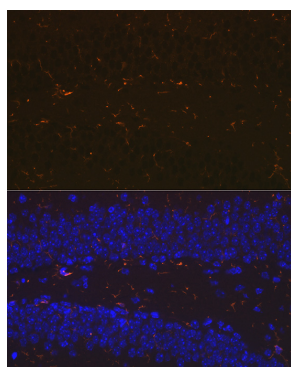
Confocal imaging of paraffin-embedded Rat brain using AIF1/IBA1 Rabbit mAb (A19776, dilution 1:200) followed by a further incubation with Cy3 Goat Anti-Rabbit IgG (H+L) (AS007, dilution 1:500) (Red). DAPI was used for nuclear staining (Blue). Objective: 40x. Perform microwave antigen retrieval with 0.01M citrate buffer (pH 6.0) prior to IF staining.



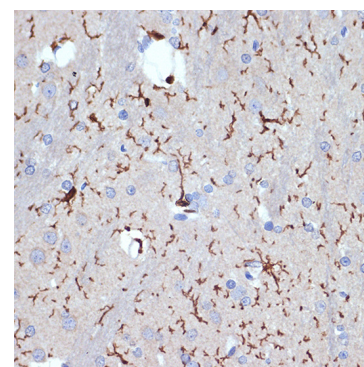
Immunofluorescence analysis of THP-1 cells using AIF1/IBA1 Rabbit mAb (A19776) at dilution of 1:100 (40x lens). Secondary antibody: Cy3 Goat Anti-Rabbit IgG (H+L) (AS007) at 1:500 dilution. Blue: DAPI for nuclear staining.



Immunofluorescence analysis of paraffin-embedded rat brain using AIF1/IBA1 Rabbit mAb (A19776) at dilution of 1:100 (40x lens). Secondary antibody: Cy3 Goat Anti-Rabbit IgG (H+L) (AS007) at 1:500 dilution. Blue: DAPI for nuclear staining.



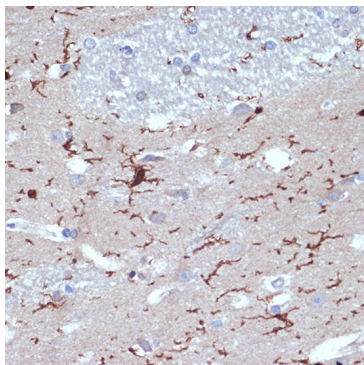
Immunofluorescence analysis of paraffin-embedded mouse brain using AIF1/IBA1 Rabbit mAb (A19776) at dilution of 1:100 (40x lens). Secondary antibody: Cy3 Goat Anti-Rabbit IgG (H+L) (AS007) at 1:500 dilution. Blue: DAPI for nuclear staining.



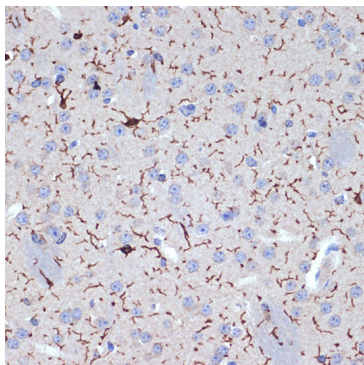
Immunohistochemistry analysis of AIF1/IBA1 in paraffin-embedded rat brain using AIF1/IBA1 Rabbit mAb (A19776) at dilution of 1:100 (40x lens). Perform microwave antigen retrieval with 10 mM Tris/EDTA buffer pH 9.0 before commencing with IHC staining protocol.

## Validation Data

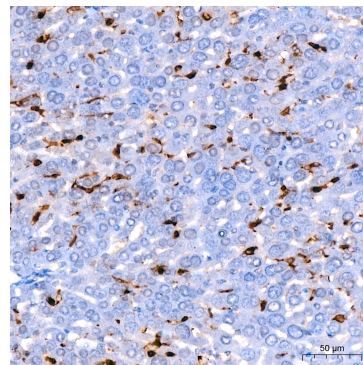
---



Immunohistochemistry analysis of AIF1/IBA1 in paraffin-embedded human brain using AIF1/IBA1 Rabbit mAb (A19776) at dilution of 1:100 (40x lens). Perform microwave antigen retrieval with 10 mM Tris/EDTA buffer pH 9.0 before commencing with IHC staining protocol.



Immunohistochemistry analysis of AIF1/IBA1 in paraffin-embedded mouse brain using AIF1/IBA1 Rabbit mAb (A19776) at dilution of 1:100 (40x lens). Perform microwave antigen retrieval with 10 mM Tris/EDTA buffer pH 9.0 before commencing with IHC staining protocol.



Immunohistochemistry analysis of AIF1/IBA1 in paraffin-embedded mouse liver using AIF1/IBA1 Rabbit mAb (A19776) at dilution of 1:200 (40x lens). Perform high pressure antigen retrieval with 10 mM citrate buffer pH 6.0 before commencing with IHC staining protocol.