

# BCL2L12 Rabbit mAb

Catalog No.: A19808 **Recombinant**

## Basic Information

### Observed MW

32kDa

### Calculated MW

37kDa

### Category

Primary antibody

### Applications

ELISA, WB, IP, IHC-P

### Cross-Reactivity

Human

### CloneNo number

ARC2334

## Background

This gene encodes a member of a family of proteins containing a Bcl-2 homology domain 2 (BH2). The encoded protein is an anti-apoptotic factor that acts as an inhibitor of caspases 3 and 7 in the cytoplasm. In the nucleus, it binds to the p53 tumor suppressor protein, preventing its association with target genes. Overexpression of this gene has been detected in a number of different cancers. There is a pseudogene for this gene on chromosome 3. Alternative splicing results in multiple transcript variants.

## Recommended Dilutions

**WB** 1:500 - 1:2000

**IP** 0.5µg-4µg antibody for  
200µg-400µg extracts of  
whole cells

**IHC-P** 1:50 - 1:200

## Immunogen Information

### Gene ID

83596

### Swiss Prot

Q9HB09

### Immunogen

Recombinant fusion protein containing a sequence corresponding to amino acids 200-300 of human BCL2L12 (Q9HB09).

### Synonyms

## Contact

☎ | 400-999-6126

✉ | [cn.market@abclonal.com.cn](mailto:cn.market@abclonal.com.cn)

🌐 | [www.abclonal.com.cn](http://www.abclonal.com.cn)

## Product Information

### Source

Rabbit

### Isotype

IgG

### Purification

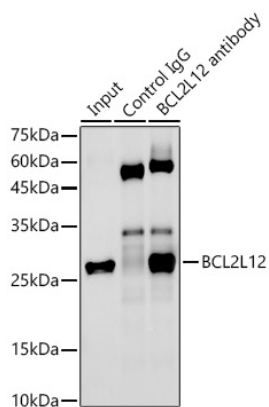
Affinity purification

### Storage

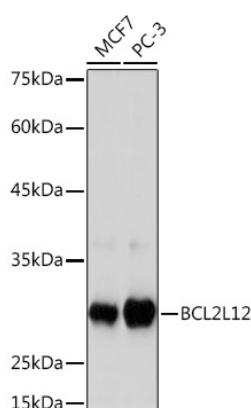
Store at -20°C. Avoid freeze / thaw cycles.

Buffer: PBS with 0.02% sodium azide, 0.05% BSA, 50% glycerol, pH7.3.

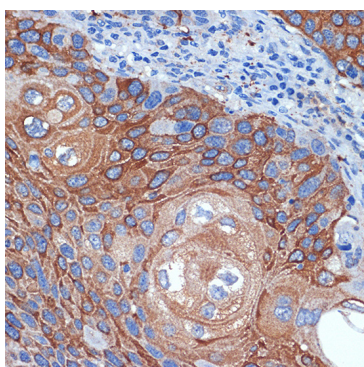
## Validation Data



Immunoprecipitation analysis of 300 µg extracts of PC-3 cells using 3 µg BCL2L12 antibody (A19808). Western blot was performed from the immunoprecipitate using BCL2L12 antibody (A19808) at a dilution of 1:500.



Western blot analysis of various lysates using BCL2L12 Rabbit mAb (A19808) at 1:1000 dilution. Secondary antibody: HRP Goat Anti-Rabbit IgG (H+L) (AS014) at 1:10000 dilution. Lysates/proteins: 25µg per lane. Blocking buffer: 3% nonfat dry milk in TBST. Detection: ECL Basic Kit (RM00020). Exposure time: 180s.



Immunohistochemistry analysis of paraffin-embedded human esophageal cancer using BCL2L12 Rabbit mAb (A19808) at dilution of 1:100 (40x lens). Perform microwave antigen retrieval with 10 mM Tris/EDTA buffer pH 9.0 before commencing with IHC staining protocol.