

Ki67 Rabbit mAb

Catalog No.: A20018

Recombinant

15 Publications

Basic Information

Observed MW

Refer to figures

Calculated MW

359kDa

Category

Primary antibody

Applications

ELISA, IHC-P, IF/ICC

Cross-Reactivity

Human, Mouse, Rat

CloneNo number

ARC5050-01

Background

Enables protein C-terminus binding activity. Involved in regulation of chromosome segregation and regulation of mitotic nuclear division. Located in chromosome; nuclear body; and nucleolus. Colocalizes with condensed chromosome. Implicated in Crohn's disease; breast cancer; human immunodeficiency virus infectious disease; and pancreatic cancer. Biomarker of several diseases, including Barrett's esophagus; autoimmune disease of musculoskeletal system (multiple); endocrine gland cancer (multiple); gastrointestinal system cancer (multiple); and interstitial cystitis.

Recommended Dilutions

IHC-P 1:50 - 1:200

IF/ICC 1:50 - 1:200

Immunogen Information

Gene ID

4288

Swiss Prot

P46013

Immunogen

A synthetic peptide corresponding to a sequence within amino acids 1200-1300 of human Ki67 (NP_002408.3).

Synonyms

KiA; MIB-; MIB-1; PPP1R105; Ki67

Contact

☎ | 400-999-6126

✉ | cn.market@abclonal.com.cn

🌐 | www.abclonal.com.cn

Product Information

Source

Rabbit

Isotype

IgG

Purification

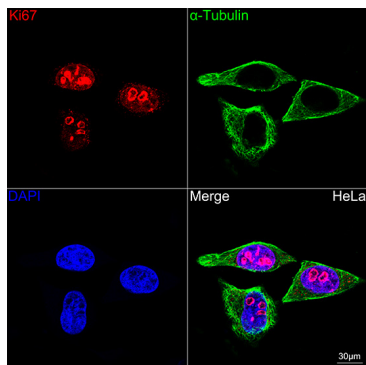
Affinity purification

Storage

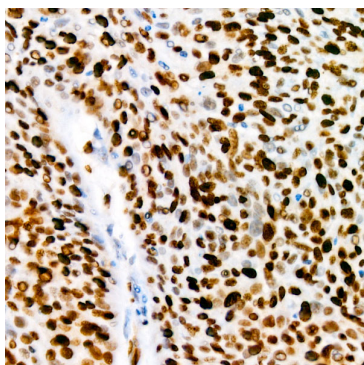
Store at -20°C. Avoid freeze / thaw cycles.

Buffer: PBS with 0.05% proclin300, 0.05% BSA, 50% glycerol, pH7.3.

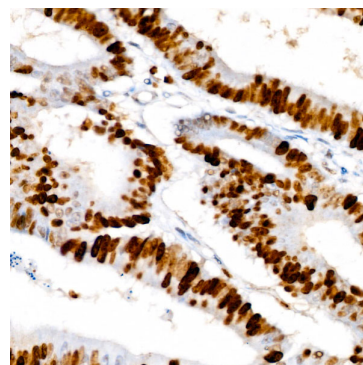
Validation Data



Confocal imaging of HeLa cells using Ki67 Rabbit mAb (A20018, dilution 1:100) (Red). The cells were counterstained with α-Tubulin Mouse mAb (AC012, dilution 1:400) (Green). DAPI was used for nuclear staining (blue). Objective: 60x.



Immunohistochemistry analysis of Ki67 in paraffin-embedded human cervix cancer using Ki67 Rabbit mAb (A20018) at dilution of 1:100 (40x lens). Perform high pressure antigen retrieval with 10 mM citrate buffer pH 6.0 before commencing with IHC staining protocol.



Immunohistochemistry analysis of Ki67 in paraffin-embedded human colon carcinoma using Ki67 Rabbit mAb (A20018) at dilution of 1:100 (40x lens). Perform high pressure antigen retrieval with 10 mM citrate buffer pH 6.0 before commencing with IHC staining protocol.