

# Rev-Erb $\alpha$ /NR1D1 Rabbit mAb

Catalog No.: A20452 **Recombinant** **3 Publications**

## Basic Information

### Observed MW

75kDa

### Calculated MW

67kDa

### Category

Primary antibody

### Applications

ELISA, WB

### Cross-Reactivity

Human, Mouse, Rat

### CloneNo number

ARC50483

## Background

This gene encodes a transcription factor that is a member of the nuclear receptor subfamily 1. The encoded protein is a ligand-sensitive transcription factor that negatively regulates the expression of core clock proteins. In particular this protein represses the circadian clock transcription factor aryl hydrocarbon receptor nuclear translocator-like protein 1 (ARNTL). This protein may also be involved in regulating genes that function in metabolic, inflammatory and cardiovascular processes.

## Recommended Dilutions

WB 1:500 - 1:1000

## Immunogen Information

### Gene ID

9572

### Swiss Prot

P20393

### Immunogen

Recombinant fusion protein containing a sequence corresponding to amino acids 280-360 of human Rev-Erb $\alpha$ /NR1D1 (NP\_068370.1).

### Synonyms

EAR1; hRev; THRA1; THRAL; ear-1; REVERBA; REVERBalpha; Rev-Erb $\alpha$ /NR1D1

## Contact

☎ | 400-999-6126

✉ | [cn.market@abclonal.com.cn](mailto:cn.market@abclonal.com.cn)

🌐 | [www.abclonal.com.cn](http://www.abclonal.com.cn)

## Product Information

### Source

Rabbit

### Isotype

IgG

### Purification

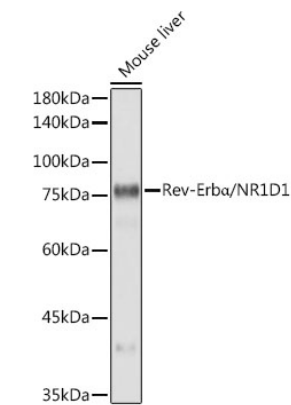
Affinity purification

### Storage

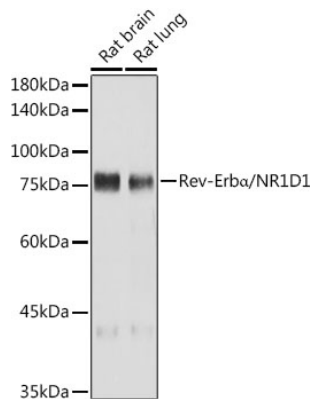
Store at -20°C. Avoid freeze / thaw cycles.

Buffer: PBS with 0.05% proclin300, 0.05% BSA, 50% glycerol, pH7.3.

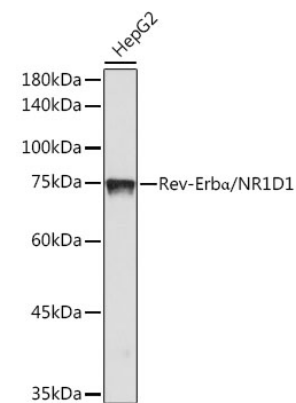
Validation Data



Western blot analysis of lysates from Mouse liver, using Rev-Erba/NR1D1 Rabbit mAb (A20452) at1:1000 dilution.  
Secondary antibody: HRP Goat Anti-Rabbit IgG (H+L) (AS014) at1:10000 dilution.  
Lysates/proteins: 25µg per lane.  
Blocking buffer: 3% nonfat dry milk in TBST.  
Detection: ECL Basic Kit (RM00020).  
Exposure time: 10s.



Western blot analysis of various lysates using Rev-Erba/NR1D1 Rabbit mAb (A20452) at1:1000 dilution.  
Secondary antibody: HRP Goat Anti-Rabbit IgG (H+L) (AS014) at1:10000 dilution.  
Lysates/proteins: 25µg per lane.  
Blocking buffer: 3% nonfat dry milk in TBST.  
Detection: ECL Basic Kit (RM00020).  
Exposure time: 30s.



Western blot analysis of lysates from HepG2 cells, using Rev-Erba/NR1D1 Rabbit mAb (A20452) at1:1000 dilution.  
Secondary antibody: HRP Goat Anti-Rabbit IgG (H+L) (AS014) at1:10000 dilution.  
Lysates/proteins: 25µg per lane.  
Blocking buffer: 3% nonfat dry milk in TBST.  
Detection: ECL Basic Kit (RM00020).  
Exposure time: 180s.