

# IL1 $\beta$ Rabbit pAb

Catalog No.: A20527 **7 Publications**

## Basic Information

### Observed MW

31kDa//17kDa

### Calculated MW

31kDa

### Category

Primary antibody

### Applications

ELISA, WB, IHC-P, IF/ICC

### Cross-Reactivity

Human, Mouse, Rat

## Background

The protein encoded by this gene is a member of the interleukin 1 cytokine family. This cytokine is produced by activated macrophages as a proprotein, which is proteolytically processed to its active form by caspase 1. The encoded protein plays a role in thymocyte proliferation and is involved in the inflammatory response.

## Recommended Dilutions

WB	1:500 - 1:1000
IHC-P	1:50 - 1:200
IF/ICC	1:50 - 1:200

## Immunogen Information

### Gene ID

16176

### Swiss Prot

P10749

### Immunogen

Recombinant fusion protein containing a sequence corresponding to amino acids 118-269 of mouse IL1 $\beta$  (NP\_032387.1).

### Synonyms

IL-1b; IL-1beta; IL1 $\beta$

## Contact

☎	400-999-6126
✉	cn.market@abclonal.com.cn
🌐	www.abclonal.com.cn

## Product Information

### Source

Rabbit

### Isotype

IgG

### Purification

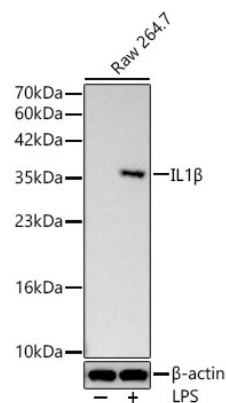
Affinity purification

### Storage

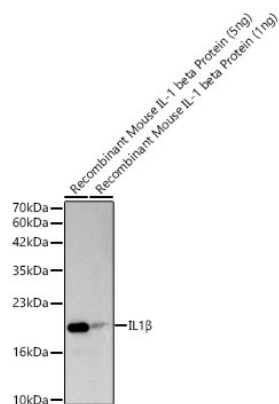
Store at -20°C. Avoid freeze / thaw cycles.

Buffer: PBS with 0.05% proclin300, 50% glycerol, pH7.3.

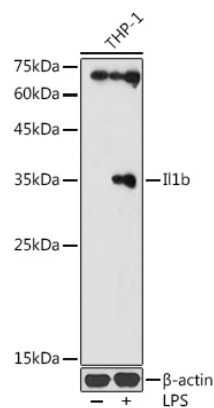
Validation Data



Western blot analysis of lysates from Raw 264.7 cells using IL1 $\beta$  Rabbit pAb (A20527) at 1:1000 dilution incubated overnight at 4°C. Raw264.7 cells were treated by LPS (200 ng/ml) at 37°C for 8 hours. Secondary antibody: HRP-conjugated Goat anti-Rabbit IgG (H+L) (AS014) at 1:10000 dilution. Lysates/proteins: 30  $\mu$ g per lane. Blocking buffer: 3 % nonfat dry milk in TBST. Detection: ECL Basic Kit (RM00020). Exposure time: 90s.



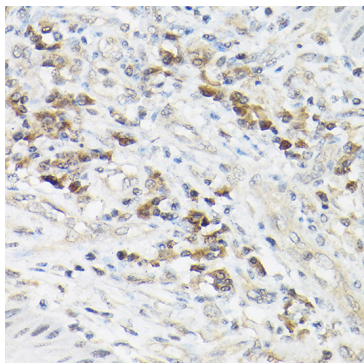
Western blot analysis of lysates from recombinant Mouse IL-1 beta Protein using IL1 $\beta$  Rabbit pAb (A20527) at 1:1000 dilution incubated overnight at 4°C. Secondary antibody: HRP-conjugated Goat anti-Rabbit IgG (H+L) (AS014) at 1:10000 dilution. Lysates/proteins: 1ng/5ng  $\mu$ g per lane. Blocking buffer: 3% nonfat dry milk in TBST. Detection: ECL Basic Kit (RM00020). Exposure time: 30s.



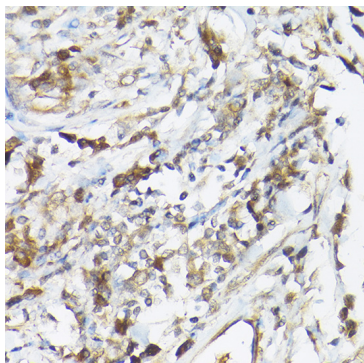
Western blot analysis of various lysates using IL1 $\beta$  Rabbit pAb (A20527) at 1:1000 dilution. THP-1 cells were treated by LPS (1  $\mu$ g/ml) at 37°C for 8 hours. Secondary antibody: HRP Goat Anti-Rabbit IgG (H+L) (AS014) at 1:10000 dilution. Lysates/proteins: 25 $\mu$ g per lane. Blocking buffer: 3% nonfat dry milk in TBST. Detection: ECL Enhanced Kit (RM00021). Exposure time: 180s.

## Validation Data

---



Immunohistochemistry analysis of paraffin-embedded Human esophageal cancer using IL1 $\beta$  Rabbit pAb (A20527) at dilution of 1:50 (40x lens). High pressure antigen retrieval performed with 0.01M Citrate Bufferr (pH 6.0) prior to IHC staining.



Immunohistochemistry analysis of paraffin-embedded Human tonsil using IL1 $\beta$  Rabbit pAb (A20527) at dilution of 1:50 (40x lens). High pressure antigen retrieval performed with 0.01M Citrate Bufferr (pH 6.0) prior to IHC staining.