

OsHAL3 Rabbit pAb

Catalog No.: A20656 **1 Publications**

Basic Information

Observed MW

26kDa

Calculated MW

24kDa

Category

Primary antibody

Applications

ELISA, WB

Cross-Reactivity

Oryza sativa

Background

OsHAL3, a novel light-responsive protein, plays an essential role in photoperiodic control of flowering time in rice, which is probably mediated by forming a complex with Hd1

Recommended Dilutions

WB 1:500 - 1:2000

Immunogen Information

Gene ID

4340408

Swiss Prot

C6L686

Immunogen

Recombinant protein of Oryza sativa OsHAL3.

Synonyms

HAL3; PPCDC; OsHAL3; OsJ_20467; OJ1147_D11.5-1

Contact

 | 400-999-6126

 | cn.market@abclonal.com.cn

 | www.abclonal.com.cn

Product Information

Source

Rabbit

Isotype

IgG

Purification

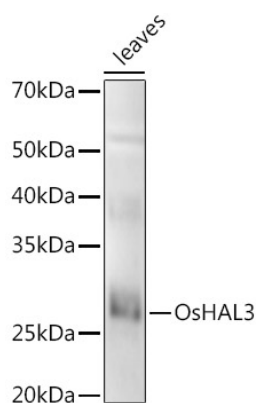
Affinity purification

Storage

Store at -20°C. Avoid freeze / thaw cycles.

Buffer: PBS with 0.05% proclin300, 50% glycerol, pH7.3.

Validation Data



Western blot analysis of extracts of various tissues from the japonica rice (*Oryza sativa* L.) variety Zhonghua 11, using OsHAL3 Rabbit pAb (A20656) at 1:1000 dilution.

Secondary antibody: HRP Goat Anti-Rabbit IgG (H+L) (AS014) at 1:10000 dilution.

Lysates/proteins: 25µg per lane.

Blocking buffer: 3% nonfat dry milk in TBST.

Detection: ECL Enhanced Kit (RM00021).

Exposure time: 30s.