

# HER2/ErbB2 Rabbit pAb

Catalog No.: A2071 **7 Publications**

## Basic Information

**Observed MW**

185kDa

**Calculated MW**

138kDa

**Category**

Primary antibody

**Applications**

ELISA, WB, IHC-P

**Cross-Reactivity**

Human, Mouse, Rat

## Background

This gene encodes a member of the epidermal growth factor (EGF) receptor family of receptor tyrosine kinases. This protein has no ligand binding domain of its own and therefore cannot bind growth factors. However, it does bind tightly to other ligand-bound EGF receptor family members to form a heterodimer, stabilizing ligand binding and enhancing kinase-mediated activation of downstream signalling pathways, such as those involving mitogen-activated protein kinase and phosphatidylinositol-3 kinase. Allelic variations at amino acid positions 654 and 655 of isoform a (positions 624 and 625 of isoform b) have been reported, with the most common allele, Ile654/Ile655, shown here. Amplification and/or overexpression of this gene has been reported in numerous cancers, including breast and ovarian tumors. Alternative splicing results in several additional transcript variants, some encoding different isoforms and others that have not been fully characterized.

## Recommended Dilutions

**WB** 1:100 - 1:500**IHC-P** 1:50 - 1:200

## Immunogen Information

**Gene ID**

2064

**Swiss Prot**

P04626

**Immunogen**

A synthetic peptide corresponding to a sequence within amino acids 1156-1255 of human HER2/ErbB2 (NP\_004439.2).

**Synonyms**

NEU; NGL; HER2; TKR1; CD340; HER-2; VSCN2; MLN 19; MLN-19; c-ERB2; c-ERB-2; HER-2/neu; p185(erbB2); HER2/ErbB2

## Contact

 | 400-999-6126 | [cn.market@abclonal.com.cn](mailto:cn.market@abclonal.com.cn) | [www.abclonal.com.cn](http://www.abclonal.com.cn)

## Product Information

**Source**

Rabbit

**Isotype**

IgG

**Purification**

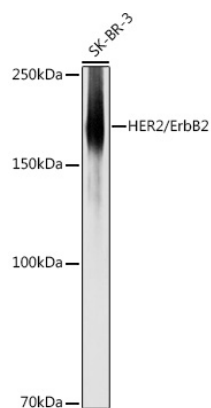
Affinity purification

**Storage**

Store at -20°C. Avoid freeze / thaw cycles.

Buffer: PBS with 0.02% sodium azide, 50% glycerol, pH 7.3.

## Validation Data



Western blot analysis of lysates from SK-BR-3 cells, using HER2/ErbB2 Rabbit pAb (A2071) at 1:500 dilution.

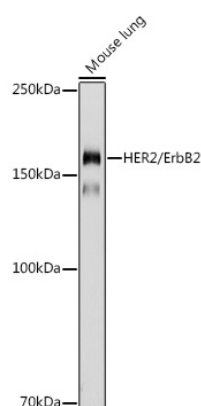
Secondary antibody: HRP Goat Anti-Rabbit IgG (H+L) (AS014) at 1:10000 dilution.

Lysates/proteins: 25µg per lane.

Blocking buffer: 3% nonfat dry milk in TBST.

Detection: ECL Basic Kit (RM00020).

Exposure time: 1s.



Western blot analysis of lysates from Mouse lung, using HER2/ErbB2 Rabbit pAb (A2071) at 1:500 dilution.

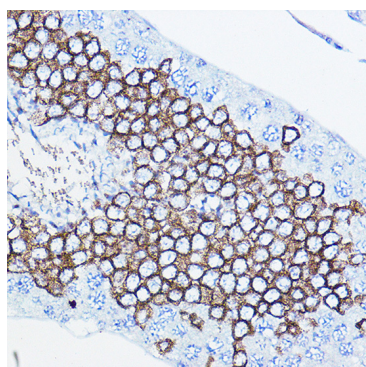
Secondary antibody: HRP Goat Anti-Rabbit IgG (H+L) (AS014) at 1:10000 dilution.

Lysates/proteins: 25µg per lane.

Blocking buffer: 3% nonfat dry milk in TBST.

Detection: ECL Basic Kit (RM00020).

Exposure time: 180s.



Immunohistochemistry analysis of HER2/ErbB2 in paraffin-embedded rat testis using HER2/ErbB2 Rabbit pAb (A2071) at dilution of 1:100 (40x lens). Perform high pressure antigen retrieval with 10 mM citrate buffer pH 6.0 before commencing with IHC staining protocol.