

[KO Validated] CDK4 Rabbit pAb

Catalog No.: A21317 **KO** **Validated** **2 Publications**

Basic Information

Observed MW

35kDa

Calculated MW

34kDa

Category

Primary antibody

Applications

ELISA, WB, IHC-P, IP, IF/ICC

Cross-Reactivity

Human, Mouse

Background

The protein encoded by this gene is a member of the Ser/Thr protein kinase family. This protein is highly similar to the gene products of *S. cerevisiae* cdc28 and *S. pombe* cdc2. It is a catalytic subunit of the protein kinase complex that is important for cell cycle G1 phase progression. The activity of this kinase is restricted to the G1-S phase, which is controlled by the regulatory subunits D-type cyclins and CDK inhibitor p16(INK4a). This kinase was shown to be responsible for the phosphorylation of retinoblastoma gene product (Rb). Mutations in this gene as well as in its related proteins including D-type cyclins, p16(INK4a) and Rb were all found to be associated with tumorigenesis of a variety of cancers. Multiple polyadenylation sites of this gene have been reported.

Recommended Dilutions

WB 1:500 - 1:1000**IHC-P** 1:50 - 1:100**IP** 0.5µg-4µg antibody for
200µg-400µg extracts of
whole cells**IF/ICC** 1:50 - 1:200

Immunogen Information

Gene ID

1019

Swiss Prot

P11802

Immunogen

A synthetic peptide corresponding to a sequence within amino acids 200-303 of human CDK4 (NP_000066.1).

Synonyms

CMM3; PSK-J3; K4

Contact

 | 400-999-6126 | cn.market@abclonal.com.cn | www.abclonal.com.cn

Product Information

Source

Rabbit

Isotype

IgG

Purification

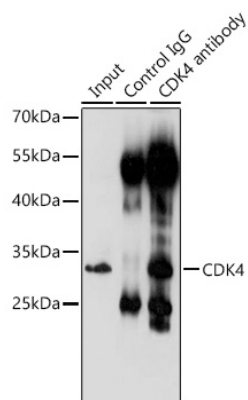
Affinity purification

Storage

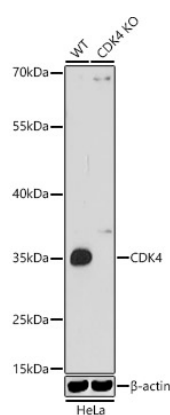
Store at -20°C. Avoid freeze / thaw cycles.

Buffer: PBS with 0.01% thimerosal, 50% glycerol, pH7.3.

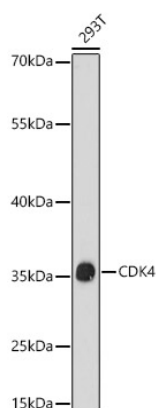
Validation Data



Immunoprecipitation analysis of 200 µg extracts of 293T cells using 3 µg CDK4 antibody (A21317). Western blot was performed from the immunoprecipitate using CDK4 antibody (A21317) at a dilution of 1:1000.

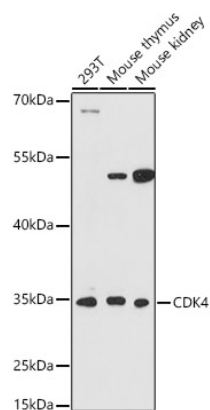


Western blot analysis of lysates from wild type (WT) and CDK4 knockout (KO) HeLa cells, using [KO Validated] CDK4 Rabbit pAb (A21317) at 1:1000 dilution.
Secondary antibody: HRP Goat Anti-Rabbit IgG (H+L) (AS014) at 1:10000 dilution.
Lysates/proteins: 25µg per lane.
Blocking buffer: 3% nonfat dry milk in TBST.
Detection: ECL Basic Kit (RM00020).
Exposure time: 60s.



Western blot analysis of lysates from 293T cells, using [KO Validated] CDK4 Rabbit pAb (A21317) at 1:1000 dilution.
Secondary antibody: HRP Goat Anti-Rabbit IgG (H+L) (AS014) at 1:10000 dilution.
Lysates/proteins: 25µg per lane.
Blocking buffer: 3% nonfat dry milk in TBST.
Detection: ECL Basic Kit (RM00020).
Exposure time: 60s.

Validation Data



Western blot analysis of various lysates using [KO Validated] CDK4 Rabbit pAb (A21317) at 1:1000 dilution.

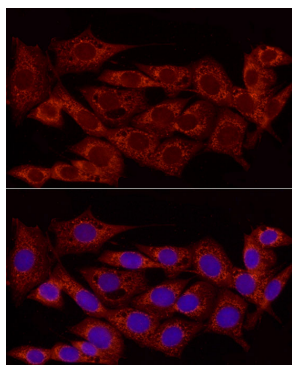
Secondary antibody: HRP Goat Anti-Rabbit IgG (H+L) (AS014) at 1:10000 dilution.

Lysates/proteins: 25µg per lane.

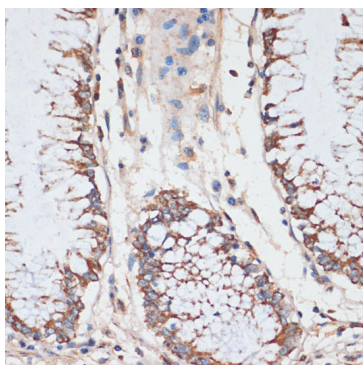
Blocking buffer: 3% nonfat dry milk in TBST.

Detection: ECL Basic Kit (RM00020).

Exposure time: 60s.



Immunofluorescence analysis of NIH/3T3 cells using [KO Validated] CDK4 Rabbit pAb (A21317) at dilution of 1:100 (40x lens). Secondary antibody: Cy3 Goat Anti-Rabbit IgG (H+L) (AS007) at 1:500 dilution. Blue: DAPI for nuclear staining.



Immunohistochemistry analysis of CDK4 in paraffin-embedded human colon using [KO Validated] CDK4 Rabbit pAb (A21317) at dilution of 1:100 (40x lens). Perform microwave antigen retrieval with 10 mM PBS buffer pH 7.2 before commencing with IHC staining protocol.