

Rac1/2/3 Rabbit pAb

Catalog No.: A21584

Basic Information

Observed MW

Refer to figures

Calculated MW

21kDa

Category

Primary antibody

Applications

ELISA, IF/ICC

Cross-Reactivity

Human

Background

The protein encoded by this gene is a GTPase which belongs to the RAS superfamily of small GTP-binding proteins. Members of this superfamily appear to regulate a diverse array of cellular events, including the control of cell growth, cytoskeletal reorganization, and the activation of protein kinases. Two transcript variants encoding different isoforms have been found for this gene.

Recommended Dilutions

IF/ICC 1:50 - 1:200

Immunogen Information

Gene ID

5879

Swiss Prot

P63000

Immunogen

Recombinant fusion protein containing a sequence corresponding to amino acids 1-192 of human Rac1/2/3 (NP_008839.2).

Synonyms

MIG5; MRD48; Rac-1; TC-25; p21-Rac1; Rac1/2/3

Contact

☎ | 400-999-6126

✉ | cn.market@abclonal.com.cn

🌐 | www.abclonal.com.cn

Product Information

Source

Rabbit

Isotype

IgG

Purification

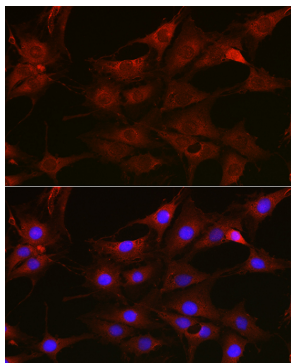
Affinity purification

Storage

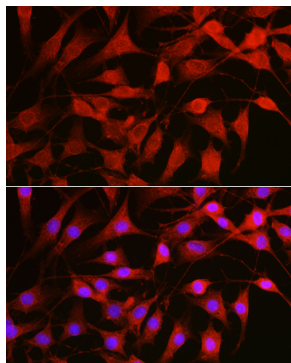
Store at -20°C. Avoid freeze / thaw cycles.

Buffer: PBS with 0.01% thimerosal, 50% glycerol, pH7.3.

Validation Data



Immunofluorescence analysis of C6 cells using Rac1/2/3 Rabbit pAb (A21584) at dilution of 1:100 (40x lens). Secondary antibody: Cy3 Goat Anti-Rabbit IgG (H+L) (AS007) at 1:500 dilution. Blue: DAPI for nuclear staining.



Immunofluorescence analysis of NIH/3T3 cells using Rac1/2/3 Rabbit pAb (A21584) at dilution of 1:100 (40x lens). Secondary antibody: Cy3 Goat Anti-Rabbit IgG (H+L) (AS007) at 1:500 dilution. Blue: DAPI for nuclear staining.