

IRF3 Rabbit pAb

Catalog No.: A2172 **18 Publications**

Basic Information

Observed MW

45-55kDa

Calculated MW

47kDa

Category

Primary antibody

Applications

ELISA, WB, IHC-P, IF/ICC, IP

Cross-Reactivity

Human, Mouse, Rat

Background

This gene encodes a member of the interferon regulatory transcription factor (IRF) family. The encoded protein is found in an inactive cytoplasmic form that upon serine/threonine phosphorylation forms a complex with CREBBP. This complex translocates to the nucleus and activates the transcription of interferons alpha and beta, as well as other interferon-induced genes. The protein plays an important role in the innate immune response against DNA and RNA viruses. Mutations in this gene are associated with Encephalopathy, acute, infection-induced, herpes-specific, 7.

Recommended Dilutions

WB 1:500 - 1:1000**IHC-P** 1:50 - 1:200**IF/ICC** 1:50 - 1:200**IP** 0.5µg-4µg antibody for
200µg-400µg extracts of
whole cells

Immunogen Information

Gene ID

3661

Swiss Prot

Q14653

Immunogen

Recombinant fusion protein containing a sequence corresponding to amino acids 100-200 of human IRF3 (NP_001184052.1).

Synonyms

IIAE7; IRF3

Contact

 | 400-999-6126 | cn.market@abclonal.com.cn | www.abclonal.com.cn

Product Information

Source

Rabbit

Isotype

IgG

Purification

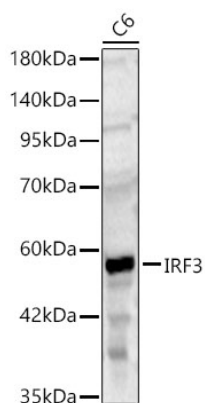
Affinity purification

Storage

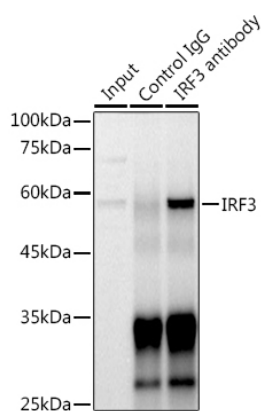
Store at -20°C. Avoid freeze / thaw cycles.

Buffer: PBS with 0.09% Sodium azide, 50% glycerol, pH7.3.

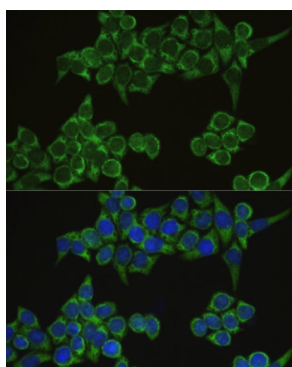
Validation Data



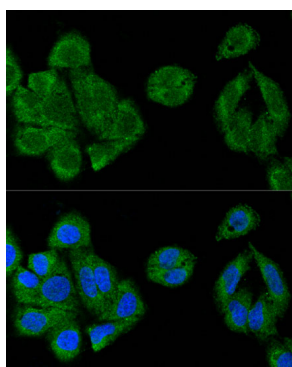
Western blot analysis of lysates from C6 cells using IRF3 Rabbit pAb(A2172) at 1:1000 dilution.
Secondary antibody: HRP Goat Anti-Rabbit IgG (H+L) (AS014) at 1:10000 dilution.
Lysates/proteins: 25 µg per lane.
Blocking buffer: 3% nonfat dry milk in TBST.
Detection: ECL Basic Kit (RM00020).
Exposure time: 90s.



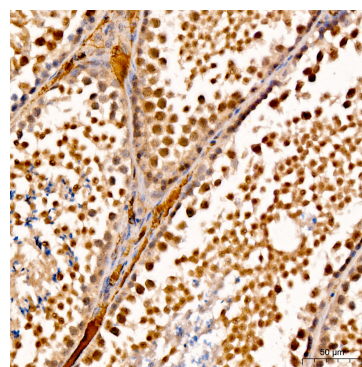
Immunoprecipitation analysis of 300 µg extracts of 293T cells using 3 µg IRF3 antibody (A2172). Western blot was performed from the immunoprecipitate using IRF3 antibody (A2172) at a dilution of 1:1000.



Immunofluorescence analysis of HeLa cells using IRF3 Rabbit pAb (A2172) at dilution of 1:100. Secondary antibody: Cy3 Goat Anti-Rabbit IgG (H+L) (AS007) at 1:500 dilution. Blue: DAPI for nuclear staining.

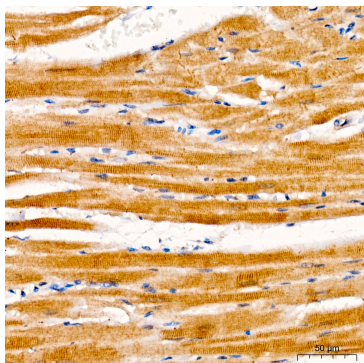


Confocal immunofluorescence analysis of U-2 OS cells using IRF3 Rabbit pAb (A2172) at dilution of 1:100. Blue: DAPI for nuclear staining.



Immunohistochemistry analysis of IRF3 in paraffin-embedded mouse testis tissue using IRF3 Rabbit pAb (A2172) at a dilution of 1:200 (40x lens). High pressure antigen retrieval was performed with 0.01 M citrate buffer (pH 6.0) prior to IHC staining.

Validation Data



Immunohistochemistry analysis of IRF3 in paraffin-embedded rat heart tissue using IRF3 Rabbit pAb (A2172) at a dilution of 1:200 (40x lens). High pressure antigen retrieval was performed with 0.01 M citrate buffer (pH 6.0) prior to IHC staining.