

# CDK1 Rabbit pAb

**Catalog No.: A21725**

## Basic Information

**Observed MW**

34kDa

**Calculated MW**

34kDa

**Category**

Primary antibody

**Applications**

ELISA, WB, IP, IF/ICC

**Cross-Reactivity**

Human, Mouse, Rat

## Background

The protein encoded by this gene is a member of the Ser/Thr protein kinase family. This protein is a catalytic subunit of the highly conserved protein kinase complex known as M-phase promoting factor (MPF), which is essential for G1/S and G2/M phase transitions of eukaryotic cell cycle. Mitotic cyclins stably associate with this protein and function as regulatory subunits. The kinase activity of this protein is controlled by cyclin accumulation and destruction through the cell cycle. The phosphorylation and dephosphorylation of this protein also play important regulatory roles in cell cycle control. Alternatively spliced transcript variants encoding different isoforms have been found for this gene.

## Recommended Dilutions

**WB** 1:500 - 1:1000**IP** 0.5µg-4µg antibody for  
200µg-400µg extracts of  
whole cells**IF/ICC** 1:50 - 1:200

## Immunogen Information

**Gene ID**

983

**Swiss Prot**

P06493

**Immunogen**

A synthetic peptide corresponding to a sequence within amino acids 198-297 of human CDK1 (NP\_001777.1).

**Synonyms**

CDC2; CDC28A; P34CDC2; CDK1

## Contact

 | 400-999-6126 | [cn.market@abclonal.com.cn](mailto:cn.market@abclonal.com.cn) | [www.abclonal.com.cn](http://www.abclonal.com.cn)

## Product Information

**Source**

Rabbit

**Isotype**

IgG

**Purification**

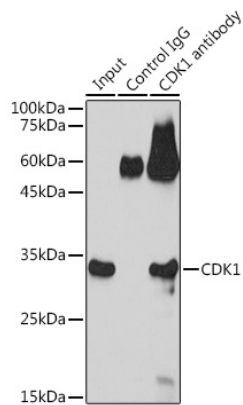
Affinity purification

**Storage**

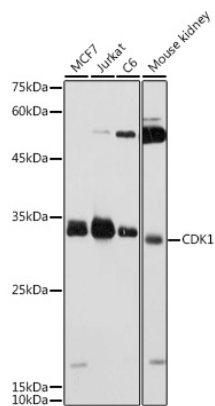
Store at -20°C. Avoid freeze / thaw cycles.

Buffer: PBS with 0.01% thimerosal, 50% glycerol, pH7.3.

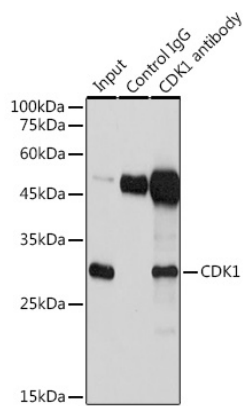
Validation Data



Immunoprecipitation analysis of 600 µg extracts of C6 cells using 3 µg CDK1 antibody (A21725). Western blot was performed from the immunoprecipitate using CDK1 antibody (A21725) at a dilution of 1:1000.

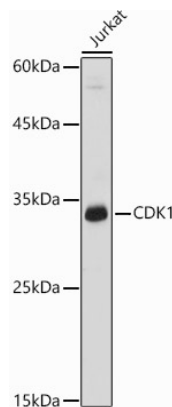


Western blot analysis of various lysates using CDK1 Rabbit pAb (A21725) at 1:1000 dilution. Secondary antibody: HRP Goat Anti-Rabbit IgG (H+L) (AS014) at 1:10000 dilution. Lysates/proteins: 25µg per lane. Blocking buffer: 3% nonfat dry milk in TBST. Detection: ECL Basic Kit (RM00020). Exposure time: 10s.

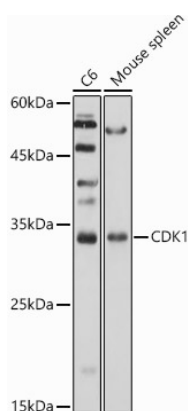


Immunoprecipitation analysis of 600 µg extracts of Jurkat cells using 3 µg CDK1 antibody (A21725). Western blot was performed from the immunoprecipitate using CDK1 antibody (A21725) at a dilution of 1:1000.

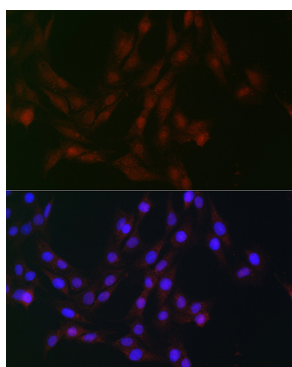
## Validation Data



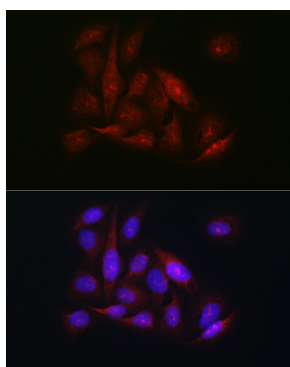
Western blot analysis of lysates from Jurkat cells, using CDK1 Rabbit pAb (A21725) at 1:1000 dilution.  
Secondary antibody: HRP Goat Anti-Rabbit IgG (H+L) (AS014) at 1:10000 dilution.  
Lysates/proteins: 25µg per lane.  
Blocking buffer: 3% nonfat dry milk in TBST.  
Detection: ECL Basic Kit (RM00020).  
Exposure time: 10s.



Western blot analysis of various lysates using CDK1 Rabbit pAb (A21725) at 1:1000 dilution.  
Secondary antibody: HRP Goat Anti-Rabbit IgG (H+L) (AS014) at 1:10000 dilution.  
Lysates/proteins: 25µg per lane.  
Blocking buffer: 3% nonfat dry milk in TBST.  
Detection: ECL Basic Kit (RM00020).  
Exposure time: 30s.



Immunofluorescence analysis of C6 cells using CDK1 Rabbit pAb (A21725) at dilution of 1:100 (40x lens). Secondary antibody: Cy3 Goat Anti-Rabbit IgG (H+L) (AS007) at 1:500 dilution. Blue: DAPI for nuclear staining.



Immunofluorescence analysis of U-2 OS cells using CDK1 Rabbit pAb (A21725) at dilution of 1:100 (40x lens). Secondary antibody: Cy3 Goat Anti-Rabbit IgG (H+L) (AS007) at 1:500 dilution. Blue: DAPI for nuclear staining.