

Claudin 1 Rabbit pAb

Catalog No.: A2196 **29 Publications**

Basic Information

Observed MW

20kDa

Calculated MW

23kDa

Category

Primary antibody

Applications

ELISA, WB

Cross-Reactivity

Human

Background

Tight junctions represent one mode of cell-to-cell adhesion in epithelial or endothelial cell sheets, forming continuous seals around cells and serving as a physical barrier to prevent solutes and water from passing freely through the paracellular space. These junctions are comprised of sets of continuous networking strands in the outwardly facing cytoplasmic leaflet, with complementary grooves in the inwardly facing extracytoplasmic leaflet. The protein encoded by this gene, a member of the claudin family, is an integral membrane protein and a component of tight junction strands. Loss of function mutations result in neonatal ichthyosis-sclerosing cholangitis syndrome.

Recommended Dilutions

WB 1:500 - 1:1000

Immunogen Information

Gene ID

9076

Swiss Prot

O95832

Immunogen

A synthetic peptide corresponding to a sequence within amino acids 137-211 of human Claudin 1 (NP_066924.1).

Synonyms

CLD1; SEMP1; ILVASC; Claudin 1

Contact

☎ | 400-999-6126

✉ | cn.market@abclonal.com.cn

🌐 | www.abclonal.com.cn

Product Information

Source

Rabbit

Isotype

IgG

Purification

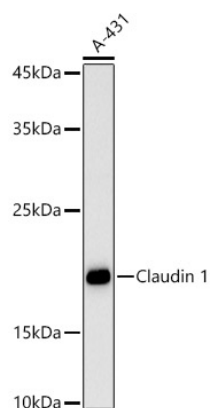
Affinity purification

Storage

Store at -20°C. Avoid freeze / thaw cycles.

Buffer: PBS with 0.05% proclin300, 50% glycerol, pH7.3.

Validation Data



Western blot analysis of A-431, using Claudin 1 Rabbit pAb (A2196) at 1:500 dilution.
Secondary antibody: HRP Goat Anti-Rabbit IgG (H+L) (AS014) at 1:10000 dilution.
Lysates/proteins: 25ug per lane.
Blocking buffer: 3% nonfat dry milk in TBST.
Detection: ECL Basic Kit (RM00020).
Exposure time: 30s.