

# Bcl-2 Rabbit pAb

Catalog No.: A2212 **8 Publications**

## Basic Information

### Observed MW

26kDa

### Calculated MW

26kDa

### Category

Primary antibody

### Applications

WB,IF/ICC,IP,ChIP

### Cross-Reactivity

Human, Mouse, Rat

## Background

This gene encodes an integral outer mitochondrial membrane protein that blocks the apoptotic death of some cells such as lymphocytes. Constitutive expression of BCL2, such as in the case of translocation of BCL2 to Ig heavy chain locus, is thought to be the cause of follicular lymphoma. Alternative splicing results in multiple transcript variants.

## Recommended Dilutions

<b>WB</b>	1:500 - 1:1000
<b>IF/ICC</b>	1:50 - 1:100
<b>IP</b>	1:50 - 1:100
<b>ChIP</b>	1:50 - 1:100

## Immunogen Information

### Gene ID

596

### Swiss Prot

P10415

### Immunogen

Recombinant protein of human Bcl-2

### Synonyms

Bcl-2; PPP1R50

## Contact

☎ | 400-999-6126

✉ | [cn.market@abclonal.com.cn](mailto:cn.market@abclonal.com.cn)

🌐 | [www.abclonal.com.cn](http://www.abclonal.com.cn)

## Product Information

### Source

Rabbit

### Isotype

IgG

### Purification

Affinity purification

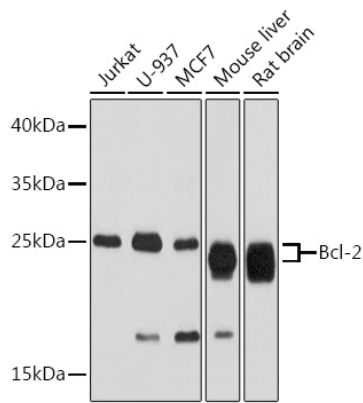
### Storage

Store at -20°C. Avoid freeze / thaw cycles.

Buffer: PBS with 0.02% sodium azide,50% glycerol,pH7.3.

## Validation Data

---



Western blot analysis of various lysates using Bcl-2 Rabbit pAb (A2212) at 1:2000 dilution.  
Secondary antibody: HRP-conjugated Goat anti-Rabbit IgG (H+L) (AS014) at 1:10000 dilution.  
Lysates/proteins: 25µg per lane.  
Blocking buffer: 3% nonfat dry milk in TBST.  
Detection: ECL Basic Kit (RM00020).  
Exposure time: 90s.