

# ABflo® 647 Rabbit anti-Human LAMP2 mAb

Catalog No.: A22217

## Basic Information

### Observed MW

Refer to figures

### Calculated MW

44kDa/45kDa

### Category

Primary antibody

### Applications

FC (intra),IF/ICC

### Cross-Reactivity

Human

### CloneNo number

ARC54767-ABf647

### Conjugate

ABflo® 647. Ex:648nm. Em:664nm.

## Recommended Dilutions

**FC (intra)** 5 µl per 10<sup>6</sup> cells in  
100 µl volume

**IF/ICC** 1:50 - 1:200

## Background

The protein encoded by this gene is a member of a family of membrane glycoproteins. This glycoprotein provides selectins with carbohydrate ligands. It may play a role in tumor cell metastasis. It may also function in the protection, maintenance, and adhesion of the lysosome. Alternative splicing of this gene results in multiple transcript variants encoding distinct proteins.

## Immunogen Information

### Gene ID

3920

### Swiss Prot

P13473

### Immunogen

Recombinant fusion protein containing a sequence corresponding to amino acids 29-375 of human LAMP2 (NP\_002285.1).

### Synonyms

DND; LAMPB; CD107b; LAMP-2; LGP-96; LGP110

## Contact

☎ | 400-999-6126

✉ | [cn.market@abclonal.com.cn](mailto:cn.market@abclonal.com.cn)

🌐 | [www.abclonal.com.cn](http://www.abclonal.com.cn)

## Product Information

### Source

Rabbit

### Isotype

IgG

### Purification

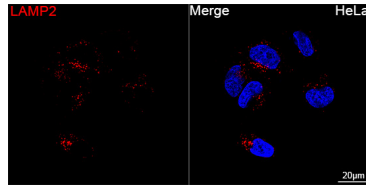
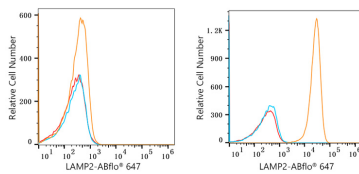
Affinity purification

### Storage

Store at 2-8°C. Avoid freeze.

Buffer: PBS with 0.03% proclin300,0.2% BSA,pH7.3.

## Validation Data



Flow cytometry:  $1 \times 10^6$  knockout (KO) HeLa cells (negative control, left) and HeLa cells (right) were intracellularly-stained with ABflo® 647 Rabbit anti-Human LAMP2 mAb (A22217, 5  $\mu$ l/Test, orange line) or ABflo® 647 Rabbit IgG isotype control (A22070, 5  $\mu$ l/Test, blue line). Non-fluorescently stained cells were used as blank control (red line).

Confocal imaging of HeLa cells using ABflo® 647 Rabbit anti-Human LAMP2 mAb (A22217, dilution 1:200). DAPI was used for nuclear staining (Blue). Objective: 100x.