

ICAM-1/CD54 Rabbit PolymAb®

Catalog No.: A22596

1 Publications

Basic Information

Observed MW

92kDa/100kDa

Calculated MW

58kDa

Category

Primary antibody

Applications

ELISA, WB, IHC-P, IF/ICC

Cross-Reactivity

Human, Mouse, Rat

CloneNo number

ARC53633_ARC54995

Background

This gene encodes an integral membrane protein that binds leukocyte adhesion protein LFA-1. It participates in the innate immune response.

Recommended Dilutions

WB	1:2000 - 1:10000
IHC-P	1:100 - 1:500
IF/ICC	1:100 - 1:500

Immunogen Information

Gene ID

15894/3383

Swiss Prot

P13597/P05362

Immunogen

Recombinant protein of human/mouse ICAM-1/CD54.

Synonyms

MAL; CD54; Icam; Ly-4; Ly-47; Icam-1; MALA-2

Contact

	400-999-6126
	cn.market@abclonal.com.cn
	www.abclonal.com.cn

Product Information

Source

Rabbit

Isotype

IgG

Purification

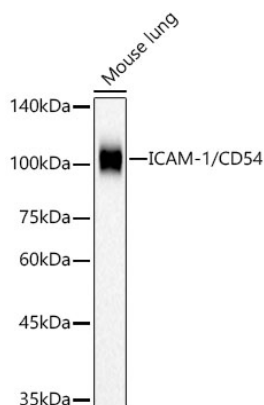
Affinity purification

Storage

Store at -20°C. Avoid freeze / thaw cycles.

Buffer: PBS with 0.05% proclin300, 0.05% BSA, 50% glycerol, pH7.3.

Validation Data



Western blot analysis of lysates from Mouse lung, using ICAM-1/CD54 Rabbit PolymAb® (A22596) at 1:10000 dilution.

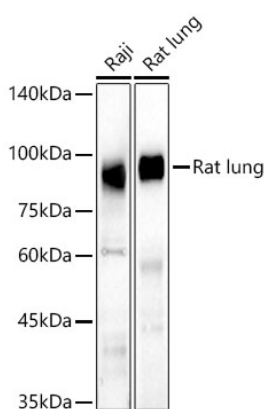
Secondary antibody: HRP Goat Anti-Rabbit IgG (H+L) (AS014) at 1:10000 dilution.

Lysates/proteins: 25µg per lane.

Blocking buffer: 3% nonfat dry milk in TBST.

Detection: ECL Basic Kit (RM00020).

Exposure time: 30s.



Western blot analysis of various lysates, using ICAM-1/CD54 Rabbit PolymAb® (A22596) at 1:10000 dilution.

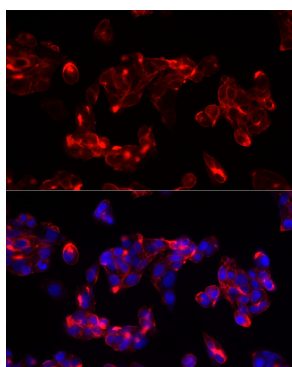
Secondary antibody: HRP Goat Anti-Rabbit IgG (H+L) (AS014) at 1:10000 dilution.

Lysates/proteins: 25µg per lane.

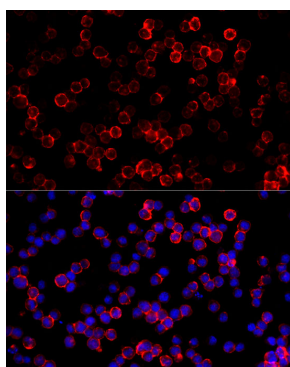
Blocking buffer: 3% nonfat dry milk in TBST.

Detection: ECL Enhanced Kit (RM00021).

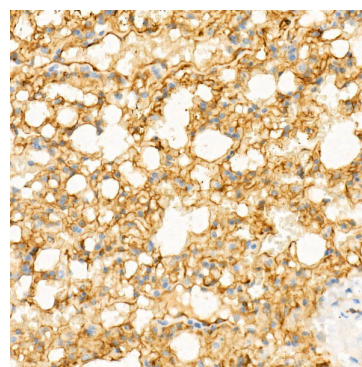
Exposure time: 120s.



Immunofluorescence analysis of HepG2 cells using ICAM-1/CD54 Rabbit PolymAb® (A22596) at dilution of 1:400 (40x lens). Secondary antibody: Cy3 Goat Anti-Rabbit IgG (H+L) (AS007) at 1:500 dilution. Blue: DAPI for nuclear staining.



Immunofluorescence analysis of Raji cells using ICAM-1/CD54 Rabbit PolymAb® (A22596) at dilution of 1:400 (40x lens). Secondary antibody: Cy3 Goat Anti-Rabbit IgG (H+L) (AS007) at 1:500 dilution. Blue: DAPI for nuclear staining.



Immunohistochemistry analysis of paraffin-embedded mouse lung using ICAM-1/CD54 Rabbit PolymAb® (A22596) at dilution of 1:300 (40x lens). Perform high pressure antigen retrieval with 10 mM citrate buffer pH 6.0 before commencing with IHC staining protocol.